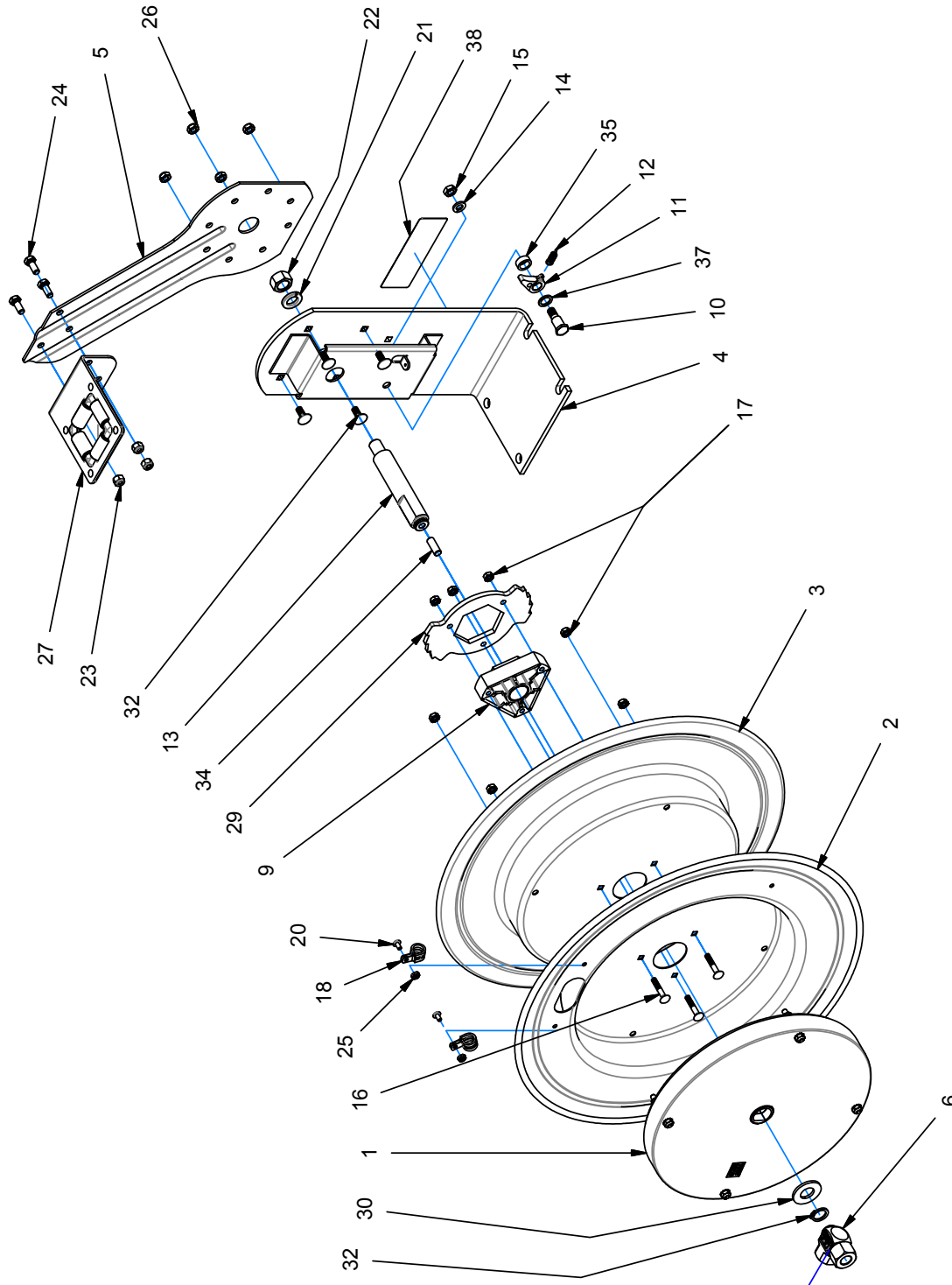


MPL-N-450 Breakdown

Hose Reel, Automatic Rewind, 1/2" NPT, 2500psi, 1/2" ID x 13/16" OD Hose



MPL-N-450 Breakdown

Hose Reel, Automatic Rewind, 1/2" NPT, 2500psi, 1/2" ID x 13/16" OD Hose

Ref#	Qty.	Part Number	Description
1	1	696-1	Spring
2	1	1703	Drum
3	1	1702	Drum
4	1	1743-2	Base
5	1	1732	Arm Guard
6	1	439	Swivel
9	1	1776-3	ASSY., Hub bearing
10	1	1620	Bolt, Shoulder, 1/2"x1 1/2"
11	1	640-1-SS	Cam Lock
12	1	274-1-SS	Spring, Dog
13	1	1794	Axle
14	1	437	Washer, Lock, 3/8"
15	1	184	Nut, Jam, 3/8-16
16	3	1953	Carriage Bolt, 1/4-20 x 1.5"
17	7	125	Nut, Keps, 1/4-20
18	2	383	Clamp
20	2	245	Bolt, 10-32 x 3/8
21	1	438	Washer, Lock, 5/8"
22	1	3584	Nut, Hex, 5/8-11
23	3	111	Nut, Lock, 5/16-18
24	3	312	Bolt, 5/16-18
25	2	130	Nut, Keps, 10-32
26	4	111-1	Nut, Lock 5/16-18, Low prof.
27	1	1728-1	Roller Bracket
29	1	1924	Locking ring
30	1	1755-1	Washer, spacer
31	1	1753	Retaining ring (5160-75)
32	4	10220-75	Bolt, carriage, 5/16-18x3/4"
34	1	10235-SS	Set screw, 3/8-16x1"-SS
35	1	6440-SS	Washer, spacer
37	1	6441-1	Washer, spacer
38	1	10925-5	Label