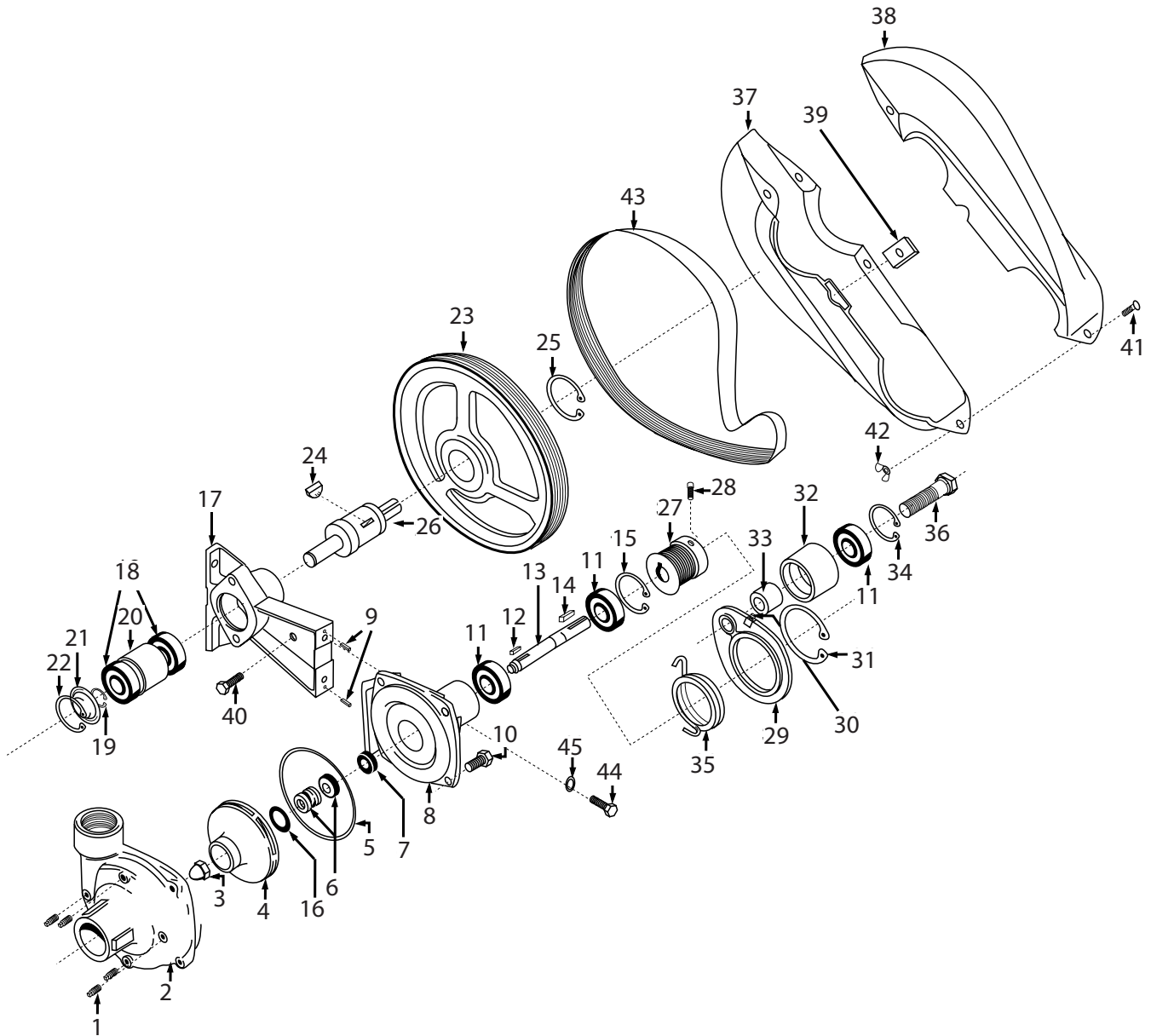


## 9403C540S-B Breakdown

Pump, Centrifugal Belt-Driven 1" Shaft 1-1/2" FPT Inlet 1-1/4" FPT Outlet



## 9403C540S-B Breakdown

### Pump, Centrifugal Belt-Driven 1" Shaft 1-1/2" FPT Inlet 1-1/4" FPT Outlet

| Ref# | Qty. | Part Number  | Description                              |
|------|------|--------------|--|
| 1    | 4    | 2406-0007    | Drain Plug                               |
| 2    | 1    | 0150-9000C   | Pump Casing (Model 9403C)                |
| 3    | 1    | 2253-0002    | Impeller Nut                             |
| 4    | 1    | 0401-9100P   | Impeller (Nylon) (standard)              |
| 5    | 1    | 1720-0083 *+ | O-Ring                                   |
| 6    | 1    | 3430-0589 +  | Mechanical Seal (Silicon Carbide)        |
| 7    | 1    | 1410-0056    | Slinger Ring                             |
| 8    | 1    | 0750-9200C   | Mounting Flange                          |
| 9    | 2    | 1600-0070    | Roll Pin                                 |
| 10   | 4    | 2210-0020    | Bolt                                     |
| 11   | 3    | 2000-0010    | Ball Bearing                             |
| 12   | 1    | 1610-0015    | Key                                      |
| 13   | 1    | 0505-9200    | Pump Shaft                               |
| 14   | 1    | 1610-0004    | Key                                      |
| 15   | 1    | 1820-0013    | Bearing Retainer                         |
| 16   | 1    | 1700-0100 *  | Gasket                                   |
| 17   | 1    | 0703-9400D   | Pedestal Bracket                         |
| 18   | 2    | 2001-0006    | Driver Shaft Bearings                    |
| 19   | 1    | 1810-0012    | Driver Shaft Bearing Retainer Ring       |
| 20   | 1    | 1410-0094    | Bearing Spacer                           |
| 21   | 1    | 2840-0053    | End Cap (label)                          |
| 22   | 1    | 1820-0032    | Bearing Bore Retaining Ring              |
| 23   | 1    | 3115-0031    | Driver Pulley (540 rpm)                  |
| 24   | 1    | 1610-0033    | Key (Driver Pulley)                      |
| 25   | 1    | 1810-0031    | Retaining Ring (Driver Pulley)           |
| 26   | 1    | 0503-9400    | Shaft (1" solid)                         |
| 27   | 1    | 3115-0034    | Driven Pulley (5/8" dia. bore)           |
| 28   | 2    | 2230-0003    | Set Screw for Driven Pulley              |
| 29   | 1    | 0706-9400C   | Idler Bracket (Cast Iron Pumps)          |
| 30   | 1    | 2405-0003    | Grease Zerk Fitting                      |
| 31   | 1    | 1810-0036    | Retaining Ring (Idler Bracket,Cast Iron) |
| 32   | 1    | 3115-0036    | Idler Pulley                             |
| 33   | 1    | 1410-0095    | Spacer (Idler Pulley)                    |
| 34   | 1    | 1820-0013    | Retaining Ring (Idler Pulley)            |
| 35   | 1    | 1900-0156    | Torsion Spring (Idler for Cast Iron)     |
| 36   | 1    | 2210-0111    | Idler Bolt/Shaft                         |
| 37   | 1    | 2840-0075    | Belt Shield                              |
| 38   | 1    | 2840-0076    | Belt Shield                              |
| 39   | 1    | 1520-0062    | Bracket for Belt Shield                  |
| 40   | 1    | 2210-0021    | Attachment Bolt for Shield               |

\* Parts included in 3430-0476, Repair Kit (for 540 rpm drives).

+Parts included in 3430-0589, Life Guard Seal Repair Kit.

## 9403C540S-B Breakdown

### Pump, Centrifugal Belt-Driven 1" Shaft 1-1/2" FPT Inlet 1-1/4" FPT Outlet

| Ref# | Qty. | Part Number | Description                    |
|------|------|-------------|--------------------------------|
| 41   | 4    | 2240-0017   | Assembly Bolts for Shield      |
| 42   | 4    | 2252-0002   | Assembly Nuts for Shield       |
| 43   | 1    | 3100-0006 * | Poly V-Belt (540 rpm)          |
| 44   | 2    | 2210-0055   | Bolts for Pump to Bracket      |
| 45   | 2    | 2260-0006   | Lock Washers for Bracket Bolts |

\* Parts included in 3430-0476, Repair Kit (for 540 rpm drives).

+Parts included in 3430-0589, Life Guard Seal Repair Kit.