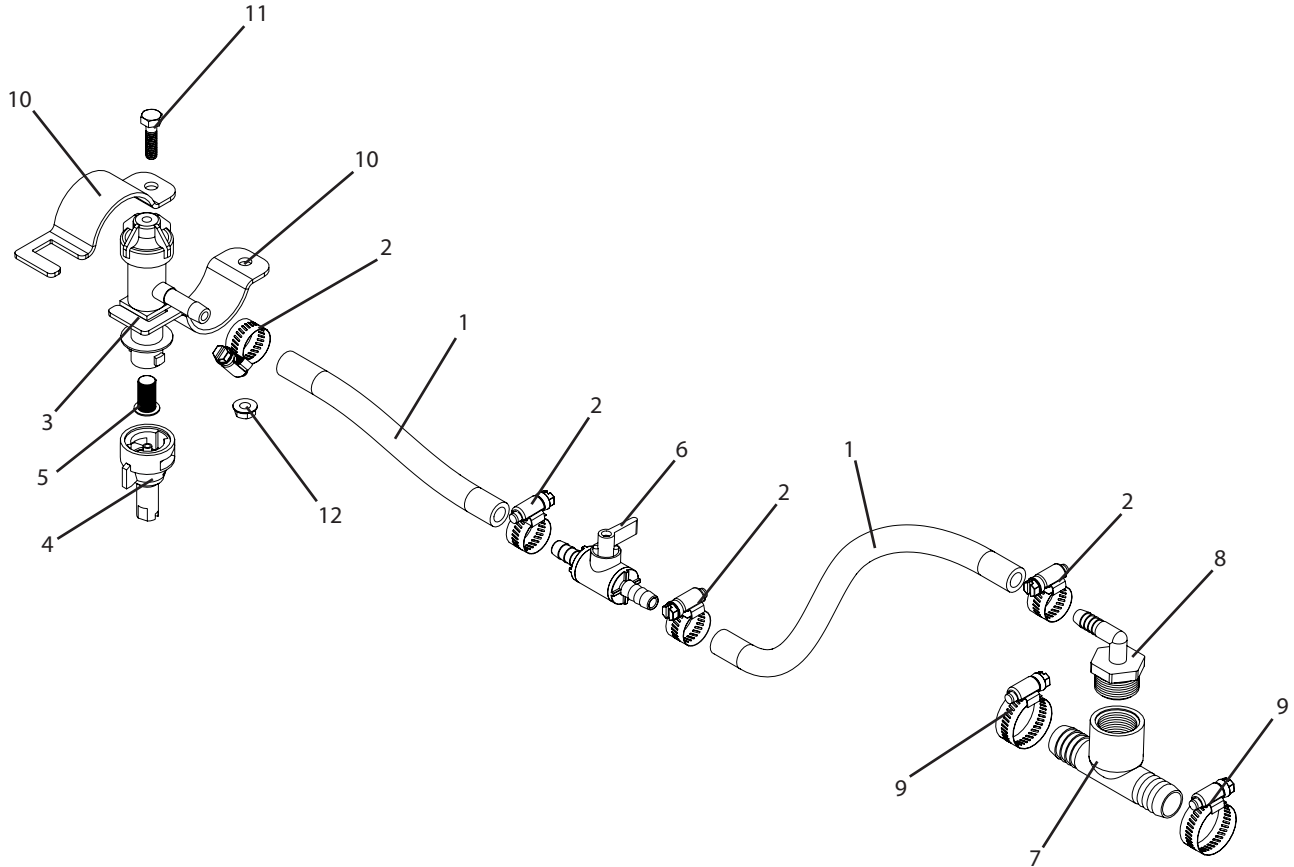


A120 Breakdown

Boom lap nozzle with manual valve



Ref#	Qty.	Part Number	Description
1	2	1006	Hose, EPDM Rubber 3/8" 300 PSI
2	4	6806052	Hose Clamp, 1/2" - 29/32" SS
3	1	22251311375NYB ***	Body, Nozzle Elbow 3/8" QJ300
4	1	-----	Nozzle tip & cap
5	1	8079PP50	Strainer, Tip 50 Mesh Red Poly Body SS Screen
6	1	9432	Valve, Ball 3/8" Hose Barbs
7	1	3T34F *	Tee, Fitting 3/4" FPT x 3/4" HB Run Poly
8	1	3EL3438	Adapter, Hose 90° 3/4" MPT x 3/8" HB
9	2	6812052 *	Hose Clamp, 11/16" - 1-1/4" SS
10	2	QJNH112 **	Clamp, Half Only QJ Nozzle For 1-1/2" Pipe SS
11	1	H14*1S **	Bolt, Hex 1/4-20 x 1" SS
12	1	FN14S **	Nut, Flange 1/4-20 SS

* Replace with (2) 3A1212, (1) 8TT12, and (2) 6806052 when used on 30' boom or less.

** Replace with AA11134 when used on a 30' manual fold boom. Replace with QJ111SQ114SS when used with 30', 40', and 45' hydraulic X-fold boom.

*** Has component parts breakdown available.

+ Determined by sprayer application rates. (See Owner's Manual)