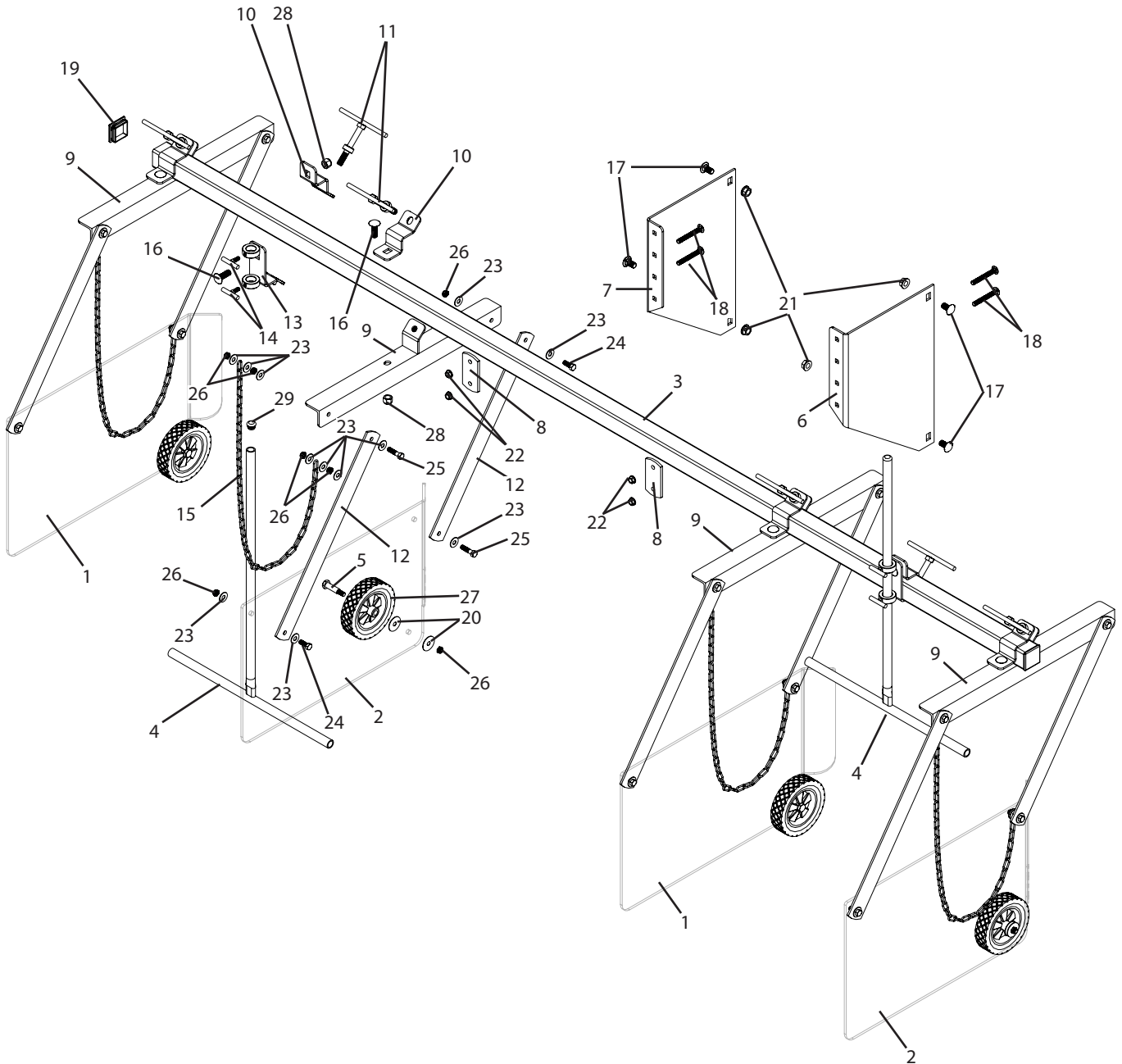


BF10S-N Breakdown

2 row shielded boom, narrow mount



BF10S-N Breakdown

2 row shielded boom, narrow mount

Ref#	Qty.	Part Number	Description
1	2	BF10S11	Polycarbonate shield, left
2	2	BF10S12	Polycarbonate shield, right
3	1	BF10S17	Tool bar, 2" x 2" x 115"
4	2	BF10S24	Spray bar
5	4	AB112	Bolt, Shoulder 1/2-13 x 1-1/2" Axle
6	1	BF10S14	Tool bar mount, right
7	1	BF10S15	Tool bar mount, left
8	2	BF10S16	Tool bar mounting clip
9	4	BF10S18	Shield frame
10	6	BF10S19	Spray bar clip
11	6	BF10S20	T-bolt, 1/2"
12	8	BF10S21	Link plate
13	2	BF10S22	Spray bar clamp
14	4	BF10S23	T-bolt, 5/16"
15	4	BF10S25	Shielded sprayer boom, chain
16	6	CB12*112G5	Bolt, Carriage 1/2-13 x 1-1/2" Gr 5
17	4	CB12*1G5	Bolt, Carriage 1/2-13 x 1" Gr 5
18	4	CB38*3G5	Bolt, Carriage 3/8-16 x 3" Gr 5
19	2	CC5515	Plug, Poly Square 2" x 10-14 Ga Black
20	8	FDW38*112	Washer, Fender 3/8" ID x 1-1/2" OD
21	4	FN12	Nut, Flange 1/2-13
22	4	FN38	Nut, Flange 3/8-16
23	48	FW38	Washer, Flat 3/8"
24	8	H5C38*1	Bolt, Hex 3/8-16 x 1" Gr 5
25	8	H5C38*112	Bolt, Hex 3/8-16 x 1-1/2" Gr 5
26	28	JNNC38	Nut, Lock Jam Nylon 3/8-16
27	4	MW61515	Wheel, Plastic 1/2" Bore 6" Dia 1.5" Wide
28	6	NNC12	Nut, Lock Nylon 1/2-13
29	2	PPR7/8*10-14	Plug, Plastic Round 7/8" OD x 10-14 Ga Blk