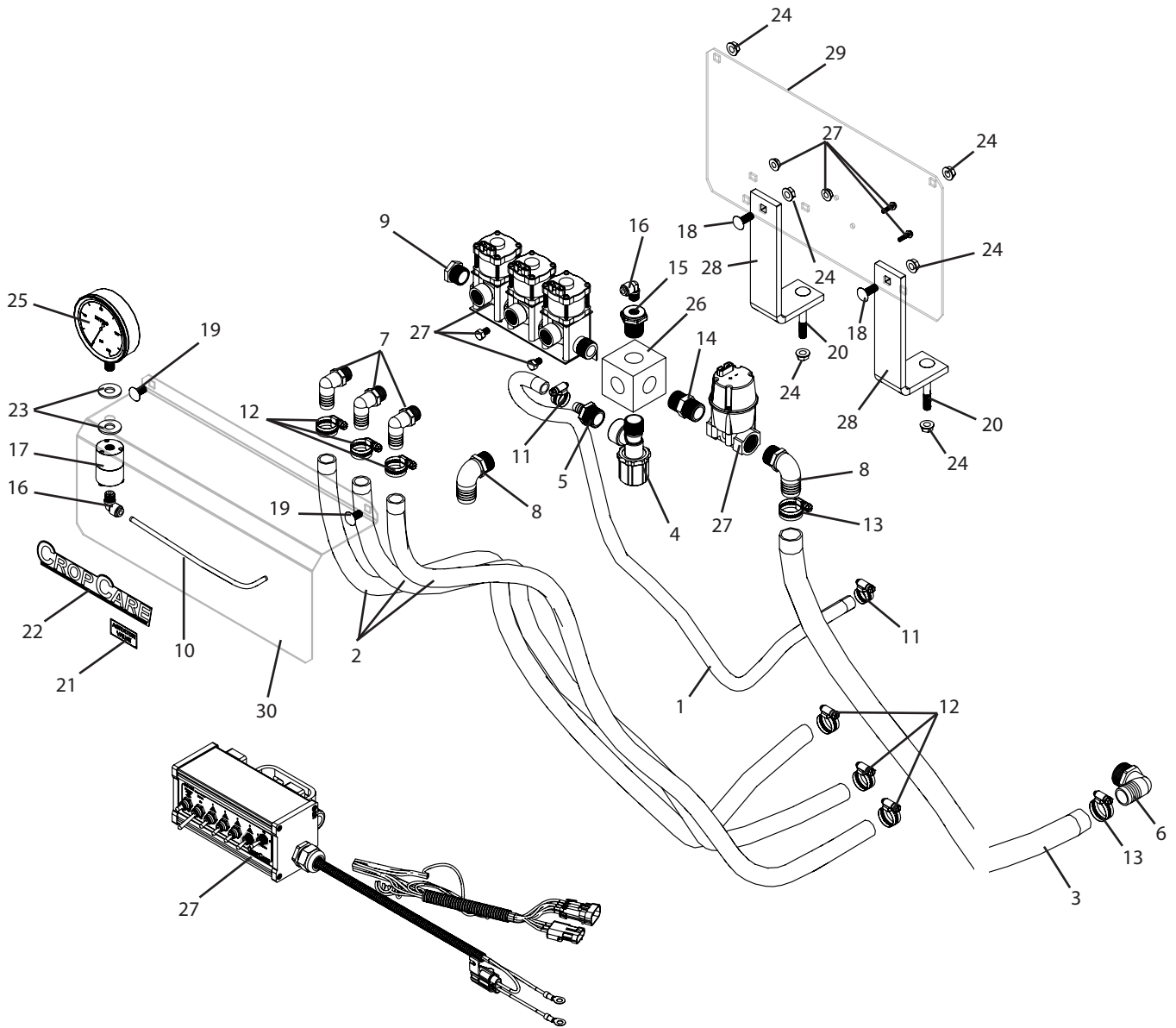


C3PT-2500-SC400 Breakdown

SC400 electric control, 2500 boom



C3PT-2500-SC400 Breakdown

SC400 electric control, 2500 boom

Ref#	Qty.	Part Number	Description
1	5 FT	1008	Hose, EPDM Rubber 1/2" 300 PSI
2	45 FT	1012 **	Hose, EPDM Rubber 3/4" 300 PSI
3	4 FT	1016	Hose, EPDM Rubber 1" 300 PSI
4	1	2352034PP	Valve, Throttling 3/4" NPT Poly 150 PSI
5	1	3A3412	Fitting, Hose 3/4" MPT x 1/2" HB
6	1	3EL100	Adapter, Hose Ell 1" MPT x 1" HB
7	3	3EL1234	Adapter, Hose 90° 1/2" MPT x 3/4" HB
8	2	3EL34100	Adapter, Hose 90° 3/4" MPT x 1" HB
9	1	3F34	Plug, 3/4" MP Poly
10	1 FT	5156N	Tubing, Nylon 1/4" OD Black
11	2	6806052	Hose Clamp, 1/2" - 29/32" SS
12	6	6812052 **	Hose Clamp, 1/2" - 1-1/4" SS
13	2	6816052	Hose Clamp, 11/16" - 1-1/2" SS
14	1	8M34	Nipple, 3/4" MPT x Close Sch 80 Poly
15	1	8RB3414	Bushing, Reducer 3/4" MPT x 1/4" FPT Sch 80 Poly
16	2	A4ME4	Adapter, TrueSeal Fitting 90° 1/4" Tube
17	1	BAAF	Isolator, Pressure Gauge 1/4" FPT
18	2	CB38*1G5	Bolt, Carriage 3/8-16 x 1" Gr 5
19	2	CB38*34G5	Bolt, Carriage 3/8-16 x 3/4" Gr 5
20	2	CB38*3G5	Bolt, Carriage 3/8-16 x 3" Gr 5
21	1	DE33	Decal, Agitator Valve
22	1	DE46	Decal, CropCare Logo 1.9" x 8.8"
23	2	FW12S	Washer, Flat, 1/2" SS
24	6	FN38	Nut, Flange 3/8-16
25	1	GG1604	Gauge, 4" Liquid Filled 160 PSI
26	1	PMB5	Plastic manifold body, 3/4" FPT x 5
27	1	SC400-2500 *	Kit, CropCare Control Kit 4 Boom Switch
28	2	T507	Mounting adapter, T550 valve plate to 3PTFRAME300
29	1	T550	Solenoid valve mounting plate
30	1	T550A	Solenoid valve cover

* Component parts breakdowns are available for these parts.

** These components are replaced with 1008 and 6806052 when used with the 1/2" boom plumbing.