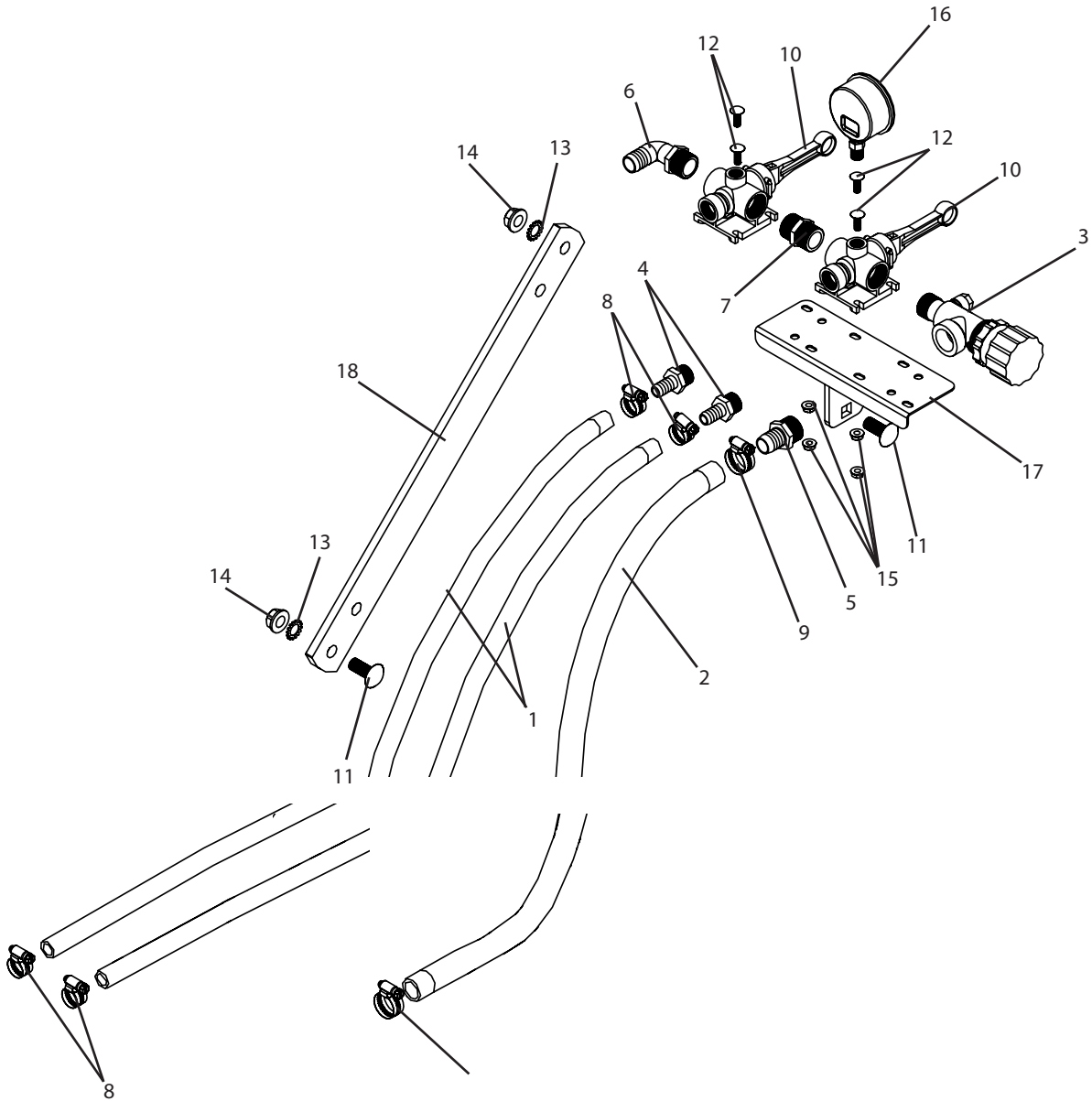


C3PT-A6B-2 Breakdown

6B manual control valves, 2 lever



C3PT-A6B-2 Breakdown

6B manual control valves, 2 lever

Ref#	Qty.	Part Number	Description
1	16 FT	1008	Hose, EPDM Rubber 1/2" 300 PSI
2	5 FT	1012	Hose, EPDM Rubber 3/4" 300 PSI
3	1	2312034PP	Valve, Relief 3/4" NPT Poly 150 PSI Piston-Type
4	2	3A1212	Adapter, Hose 1/2" MPT x 1/2" HB
5	1	3A3434	Fitting, Hose 3/4" MPT x 3/4" HB
6	1	3EL3434	Adapter, Hose 90° 3/4" MPT x 3/4" HB
7	1	3M34	Nipple, Pipe 3/4" MPT Poly
8	2	6806052	Hose Clamp, 1/2" - 29/32" SS
9	2	6812052	Hose Clamp, 1/2" - 1-1/4" SS
10	2	AA6B *	Valve, Manual Control 3/4" FPT x 1/2" FPT Boom Connection
11	2	CB12*114G5	Bolt, Carriage 1/2-13 x 1-1/4" Gr 5
12	4	CB14*34	Bolt, Carriage 1/4-20 x 3/4" Gr 2
13	2	EW58	Washer, Lock External-Tooth 5/8"
14	2	FN12	Nut, Flange 1/2-13
15	4	FN14	Nut, Flange 1/4-20
16	1	GG100	Gauge, 2-1/2" Liquid Filled 100psi
17	1	T552	6B mounting plate, triple
18	1	T553	Mounting post, gray

* Component parts breakdowns are available for these parts.