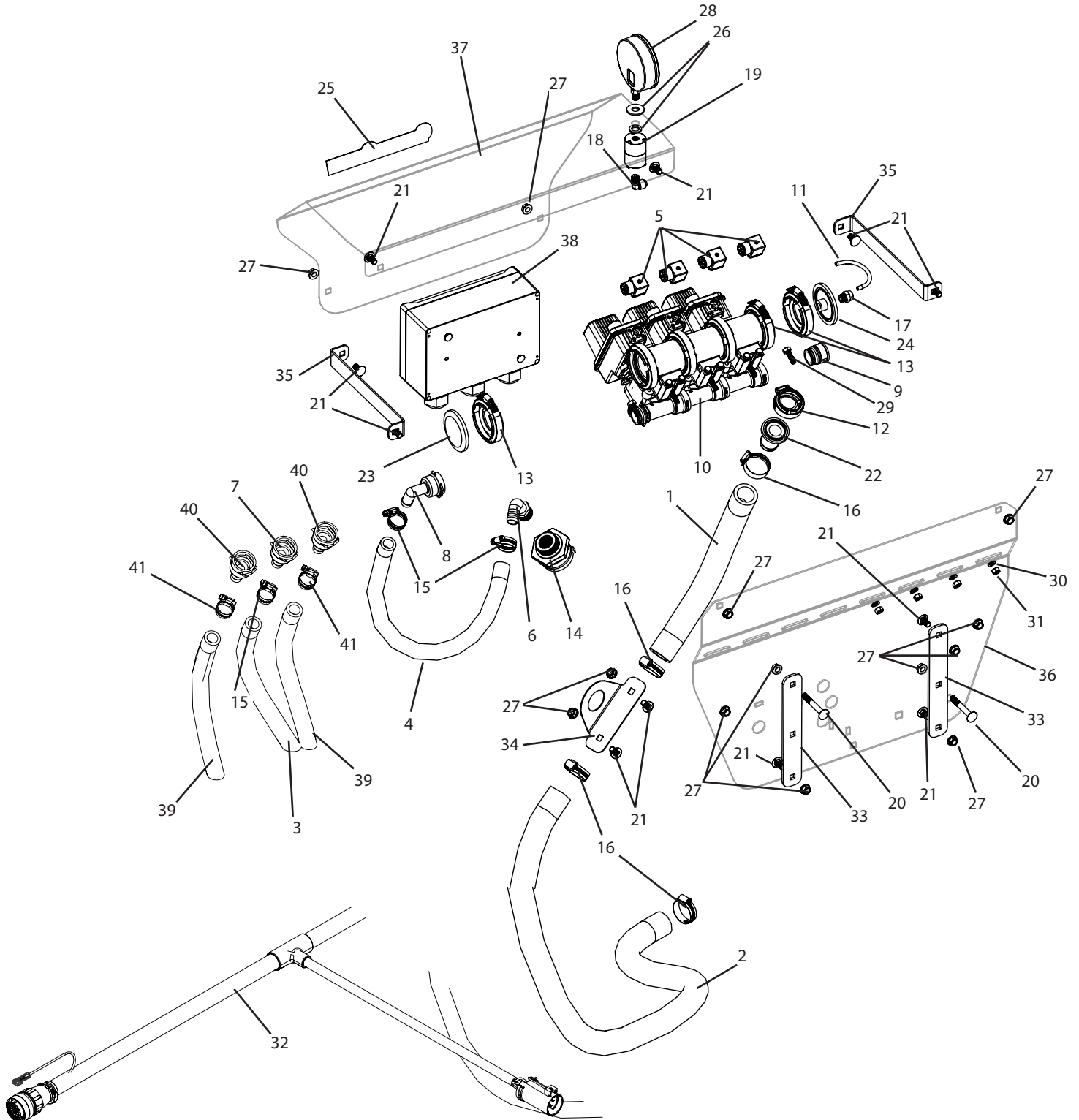


C3PT1-453 Breakdown

3 Section low pressure 3PT controls



C3PT1-453 Breakdown

3 Section low pressure 3PT controls

Ref#	Qty.	Part Number	Description
1	1.5 FT	10104	Hose, EPDM Rubber 1-1/4" 150 PSI
2	6.67 FT	10104	Hose, EPDM Rubber 1-1/4" 150 PSI
3	12 FT	1012	Hose, EPDM Rubber 3/4" 300 PSI
4	2.5 FT	1012	Hose, EPDM Rubber 3/4" 300 PSI
5	4	38082-15	Cable, 4 Pin Din Connector w/1.3m 3-Wire
6	1	3EL3434	Adapter, Hose 90° 3/4" MPT x 3/4" HB
7	1	45529-3/4	Fitting, QC 3/4" Straight HB w/Clip & O-Ring
8	1	45529-90-3/4	Fitting, QC 3/4" 90° HB w/Clip & O-Ring
9	1	45529-P	Fitting, QC Plug w/Clip & O-Ring
10	1	455BEC-3FBQ-D *	Manifold, 5-Valve Flowback #75 Flange Inlets 45529 QC For Boom & Flow-back Outlets DIN Connection
11	0.33 FT	5156N	Tubing, Nylon 1/4" OD Black
12	1	55245-50	Clamp, #50 Series & O-Ring Kit SS
13	3	55245-75	Clamp, #75 Series & O-Ring Kit SS
14	1	62798	Fitting, Tank 3/4" FPT Dbl Tap (Requires 1-5/8" Hole)
15	4	6812052	Hose Clamp, 1/2" - 1-1/4" SS
16	4	6820052	Hose Clamp, 3/4" - 1-3/4" SS
17	1	A4MC4	Adapter, TrueSeal 1/4" MPT x 1/4" Tube
18	1	A4ME4	Adapter, TrueSeal Fitting 90° 1/4" Tube
19	1	BAAF	Isolator, Pressure Gauge 1/4" FPT
20	2	CB38*234G5	Bolt, Carriage 3/8-16 x 2-3/4" Gr 5
21	11	CB38*34G5	Bolt, Carriage 3/8-16 x 3/4" Gr 5
22	1	CP45505-PP	Fitting, Flange 1-1/4" HB #50
23	1	CP46069-PP	Cover, Blank Inlet Gauge Port Flange #75 Series
24	1	CP46127-1/4-PP	Fitting, Flange 1/4" FPT Gauge Port #75
25	1	DE46	Decal, CropCare Logo 1.9" x 8.8"
26	2	FW12S	Washer, Flat, 1/2" SS
27	13	FN38	Nut, Flange 3/8-16
28	1	GG1604	Gauge, 4" Liquid Filled 160 PSI
29	4	H5C516*1	Bolt, Hex 5/16-18 x 1" Gr 5
30	4	LW516	Washer, Lock 5/16"
31	4	NC516	Nut, Hex 5/16-18
32	1	T420	CropCare wiring harness, 24', for TeeJet controls
33	2	T611	3pt sprayer, control mount plate
34	1	T855	Flowmeter mount plate
35	2	T863	Valve cover strap
36	1	T864	control back plate, C3PT1
37	1	T865	control front plate, C3PT1
38	1	T872 *	Electrical Box, CTR2 Controls
39	60 FT	1016 **	Hose, EPDM Rubber 1" 300 PSI
40	2	45529-1 **	Fitting, QC 1" Straight HB w/Clip & O-Ring
41	4	6816052 **	Hose Clamp, 11/16" - 1-1/2" SS

* These components have parts breakdowns available.

** These components are used only on 60ft hydraulic fold booms. On 45ft hydraulic fold booms, replace 1016 with 1012, 45529-1 with 45529-3/4, and 6816052 with 6812052.