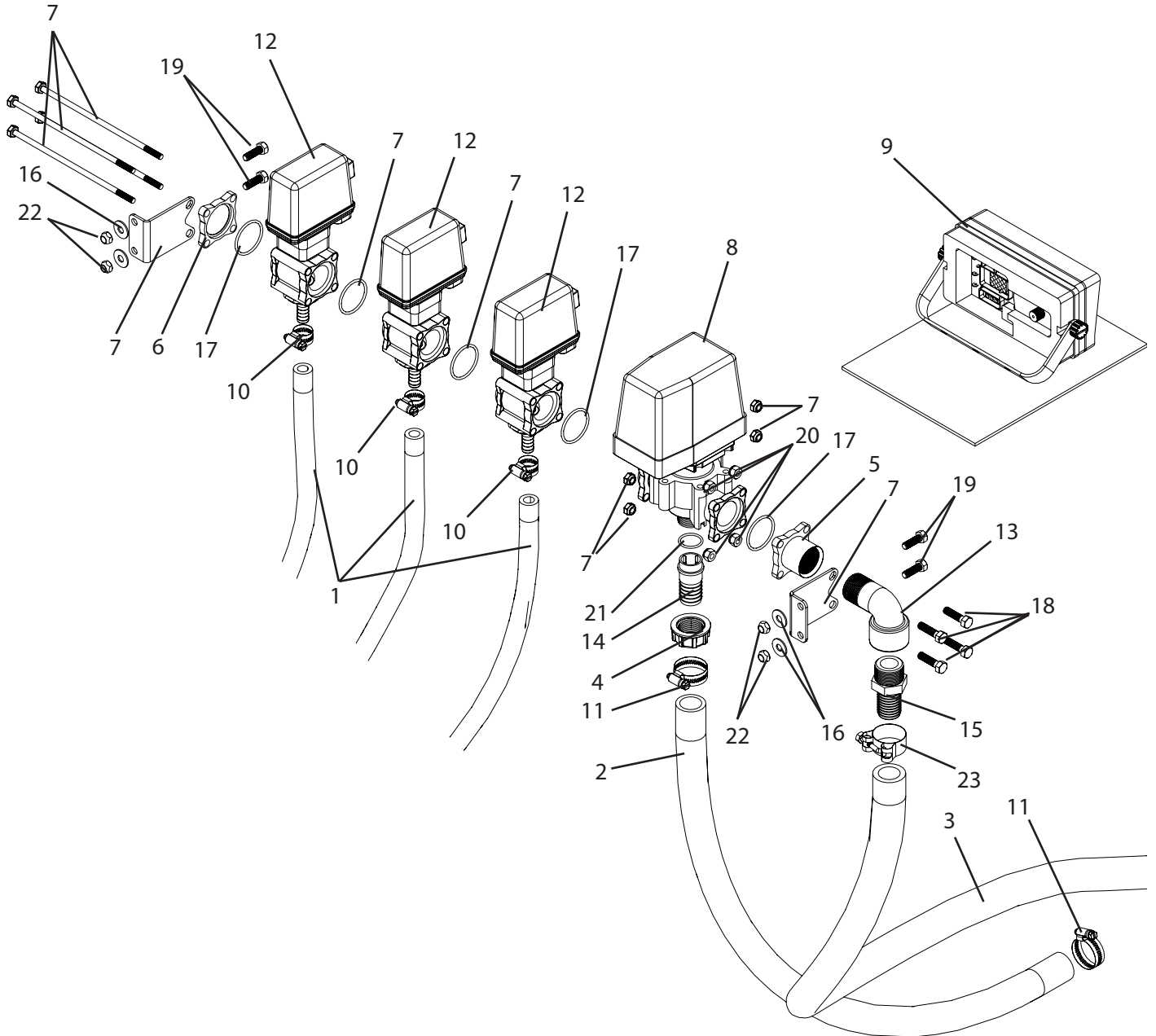


## C3PT2-4663-863 Breakdown

Electric valves with Arag console, 3 sections, high pressure



## C3PT2-4663-863 Breakdown

### Electric valves with Arag console, 3 sections, high pressure

Ref#	Qty.	Part Number	Description
1	20 FT	1008	Hose, EPDM Rubber 1/2" 300 PSI
2	5 FT	1016	Hose, EPDM Rubber 1" 300 PSI
3	5.5 FT	1116	Hose, Nitrile Grizzly 1" 500 PSI
4	1	2002040	Nut, Fly 1" BSP
5	1	463000-043	Inlet, Manifold 1" FPT #463
6	1	463011-120	Cap, Outlet Manifold #463
7	1	463900-930	Kit, Bolt 3 Section SS
8	1	465622 *	Valve, Electric Regulating 290 PSI #465 1" BMT bypass outlet
9	1	4665-3-OP300-3	Box, Control 3 Section 300 PSI w/Cables & Gauge Tubing & Tubing Connectors
10	6	6806052	Hose Clamp, 1/2" - 29/32" SS
11	2	6816052	Hose Clamp, 13/16" - 1-1/2" SS
12	3	8630001 *	Valve, 1/2" HB Outlet 290 PSI
13	1	8SE100	Elbow, Street 90° 1" NPT Sch 80 Poly
14	1	9910550210	Adapter, 1" Straight HB
15	1	A100SS	Adapter, Hose 1" MPT x 1" HB SS
16	4	FW516	Washer, Flat 5/16"
17	3	G10071V	O-Ring, Manifold Viton #463
18	4	H516*114S	Bolt, Hex 5/16-18 x 1-1/4" SS
19	4	H5C516*1	Bolt, Hex 5/16-18 x 1" Gr 5
20	4	NNC516S	Nut, Lock Nylon 5/16-18 SS
21	1	OR119	O-Ring, Buna N 15/16" ID x 1 1/8" OD, 3/32" (9910-550350)
22	4	SNC516	Nut, Lock Steel 5/16-18
23	2	TB138	Clamp, T-Bolt 1-3/8" - 1-9/16"

\*Has parts breakdown available.