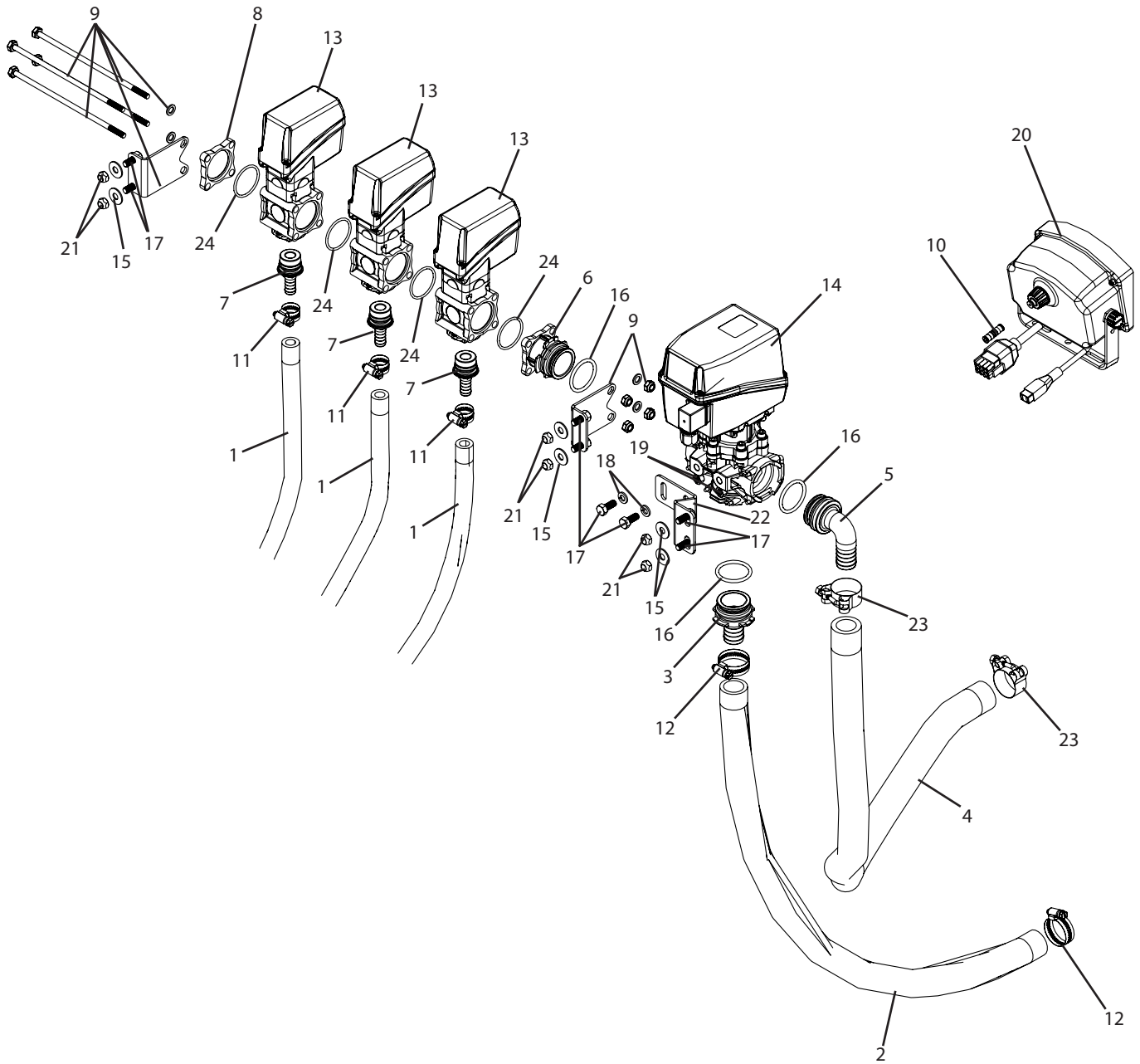


C3PT2-P140-863 Breakdown

Electric valves with Salvarani console, 3 sections, high pressure (200-300 3pts)



C3PT2-P140-863 Breakdown

Electric valves with Salvarani console, 3 sections, high pressure (200-300 3pts)

Ref#	Qty.	Part Number	Description
1	64 FT	1008 +	Hose, EPDM Rubber 1/2" 300 PSI
2	5 FT	1016	Hose, EPDM Rubber 1" 300 PSI
3	1	1091525	Adapter, Hose T5 Male QC to 1" HB
4	5.5 FT	1116	Hose, Nitrile Grizzly 1" 500 PSI
5	1	1191525	Fitting, T5 Male QC to 90° 1" HB
6	1	463000-056	860 male flange with T5 male fork connector
7	3	463001-113-1 +	Fitting, Port Outlet w/O-Ring 1/2" HB
8	1	463011-120	Cap, Outlet Manifold #463
9	1	463900-930	Kit, Bolt 3 Section SS
10	1	466303-084	Coupling, 4mm Pressure Tubing Union
11	6	6806052 +	Hose Clamp, 1/2" - 29/32" SS
12	2	6816052	Hose Clamp, 11/16" - 1-1/2" SS
13	3	8630001 *	Valve, 1/2" HB Outlet 290 PSI
14	1	8750652 *	875 Series electric diaphragm pressure relief control valve with T5 fork coupling
15	6	FW516S	Washer, Flat 5/16" SS
16	3	G11063	O-Ring, EDPM T5 Quick Connect
17	8	H5C516*34	Bolt, Hex 5/16-18 x 3/4" Gr 5
18	2	LW516	Washer, Lock 5/16"
19	2	NC516	Nut, Hex 5/16-18
20	1	P140-3-VP-300PSI	Box, Control 3 Section 300 PSI w/Cables & Gauge Tubing & Tubing Connectors
21	6	SNC516	Nut, Lock Steel 5/16-18
22	1	T340	Regulating valve mount, 4663 Arag Controls
23	2	TB138	Clamp, T-Bolt 1-3/8" - 1-9/16"
24	4	G10071V *+	O-Ring, Manifold Viton #463

* Additional breakdowns available.

*+ These are included in 463900-930.

** Only used with convenience package.

+ Used with 3/4" plumbing, replace 1008 with 1012, 6806052 with 6812052, and 463001-113-1 with 463001-119-1.