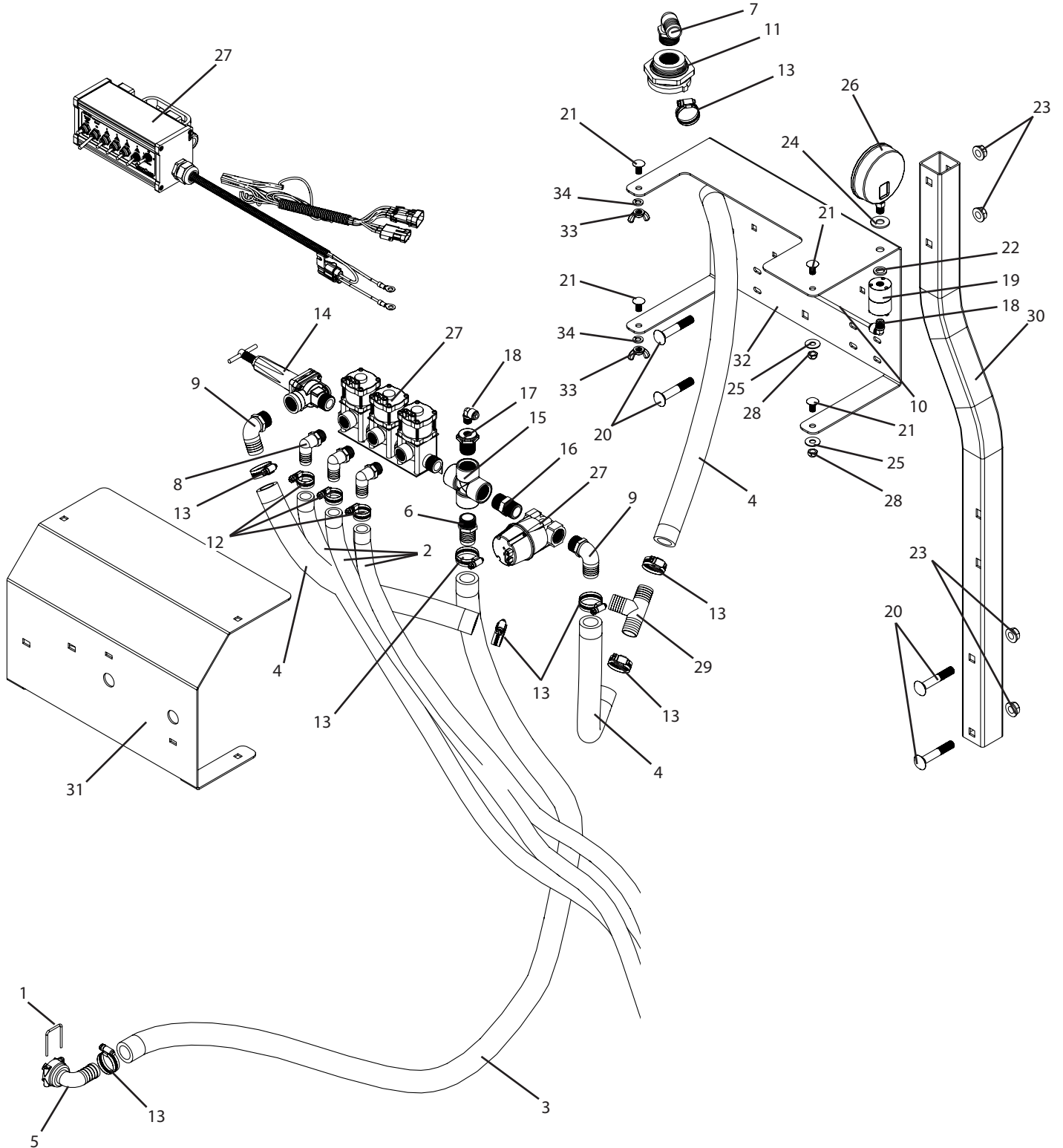


## C3PT2-SC400-PR Breakdown

SC400 electric control, 2500 boom w / safety relief valve



## C3PT2-SC400-PR Breakdown

### SC400 electric control, 2500 boom w / safety relief valve

Ref#	Qty.	Part Number	Description
1	1	010004	Connector, T4 Fork
2	45 FT	1012 **	Hose, EPDM Rubber 3/4" 300 PSI
3	6.25 FT	1016	Hose, EPDM Rubber 1" 300 PSI
4	5 FT	1016	Hose, EPDM Rubber 1" 300 PSI
5	1	1190425	Elbow, T4 Female QC x 1" 90° HB
6	1	3A34100	Fitting, Hose 3/4" MPT x 1" HB
7	1	3EL100	Adapter, Hose Ell 1" MPT x 1" HB
8	3	3EL1234 *	Adapter, Hose 90° 1/2" MPT x 3/4" HB
9	2	3EL34100	Adapter, Hose 90° 3/4" MPT x 1" HB
10	0.6 FT	5156N	Tubing, Nylon 1/4" OD Black
11	1	60427	Fitting, Bulkhead 1" FPT Dbl Tap (Requires 2-1/4" Hole)
12	6	6812052 ***	Hose Clamp, 11/16" - 1-1/4" SS
13	8	6816052	Hose Clamp, 13/16" - 1-1/2" SS
14	1	846034	Valve, Relief Diaphragm Type 300PSI 3/4" NPT Fittings
15	1	8CR34	Cross, 3/4" FPT Sch 80 Poly
16	1	8M34	Nipple, 3/4" MPT x Close Sch 80 Poly
17	1	8RB3414	Bushing, Reducer 3/4" MPT x 1/4" FPT Sch 80 Poly
18	2	A4ME4	Adapter, TrueSeal Fitting 90° 1/4" Tube
19	1	BAAF	Isolator, Pressure Gauge 1/4" FPT
20	4	CB12*3G5	Bolt, Carriage 1/2-13 x 3" Gr 5
21	4	CB38*34G5	Bolt, Carriage 3/8-16 x 3/4" Gr 5
22	1	FBWXQ	Washer, Fiber 5/8" x 3/4" x 1/16"
23	4	FN12	Nut, Flange 1/2-13
24	1	FW12S	Washer, Flat, 1/2" SS
25	2	FW38	Washer, Flat 3/8"
26	1	GG1604	Gauge, 4" Liquid Filled 160 PSI
27	1	SC400-2500 +	Kit, CropCare Control Kit 4 Boom Switch
28	2	SNC38	Nut, Lock Steel 3/8-16
29	1	T100	Tee, 1" HB Nylon
30	1	T313	200-300 3PT Controls, Control Post
31	1	T314	200-300 3PT Controls, Control Cover
32	1	T315	200-300 3PT Controls, Manifold Mount
33	2	WN38	Nut, Wing 3/8-16
34	2	LW38	Washer, Lock 3/8"

\* 3EL1212 hose barbs if used with booms 30' or less.

\*\* 1008 hose if used with booms 30' or less.

\*\*\* 6806052 hose clamps if used with booms 30' or less.

+ Console & solenoid breakdowns available in owners manual.