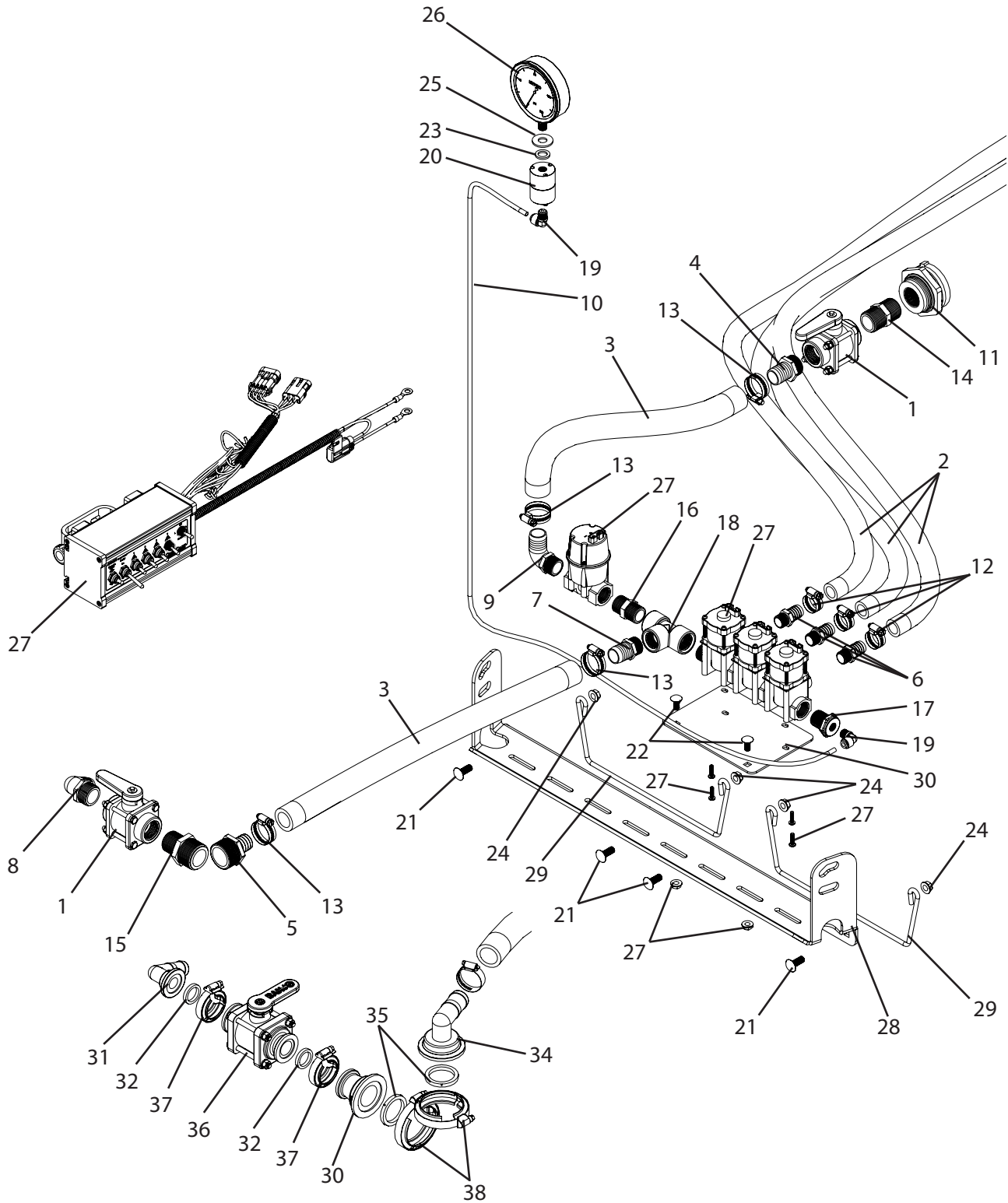


CTR2-SC400-2500 Breakdown

SC400 electric control, for large trailers



CTR2-SC400-2500 Breakdown

SC400 electric control, for large trailers

Ref#	Qty.	Part Number	Description
1	2	100STD +	Valve, Ball Valve Bolted 1" Std Port
2	58 FT	1012	Hose, EPDM Rubber 3/4" 300 PSI
3	4 FT	1016	Hose, EPDM Rubber 1" 300 PSI
4	1	3A100	Adapter, Hose 1" MPT x 1" HB
5	1	3A114100 +	Adapter, Hose 1-1/4" MPT x 1" Barb
6	3	3A1234	Adapter, Hose 1/2" MPT x 3/4" HB
7	1	3A34100	Fitting, Hose 3/4" MPT x 1" HB
8	1	3EL100 +	Adapter, Hose Ell 1" MPT x 1" HB
9	1	3EL34100	Adapter, Hose 90° 3/4" MPT x 1" HB
10	6 FT	5156N	Tubing, Nylon 1/4" OD Black
11	1	60427	Fitting, Bulkhead 1" FPT Dbl Tap (Requires 2-1/4" Hole)
12	6	6812052	Hose Clamp, 11/16" - 1-1/4" SS
13	4	6816052	Hose Clamp, 13/16" - 1-1/2" SS
14	1	8M100	Nipple, 1" MPT x Short Sch 80 Poly
15	1	8M1141 +	Nipple, Reducer 1-1/4" MPT x 1" MPT Sch 80 Poly
16	1	8M34	Nipple, 3/4" MPT x Close Sch 80 Poly
17	1	8RB3414	Bushing, Reducer 3/4" MPT x 1/4" FPT Sch 80 Poly
18	1	8TT34	Tee, Poly 3/4" FPT Sch 80
19	2	A4ME4	Adapter, TrueSeal Fitting 90° 1/4" Tube
20	1	BAAF	Isolator, Pressure Gauge 1/4" FPT
21	4	CB38*1G5	Bolt, Carriage 3/8-16 x 1" Gr 5
22	2	CB516*34G5	Bolt, Carriage 5/16-18 x 3/4" Gr 5
23	1	FBWXQ	Washer, Fiber 5/8" x 3/4" x 1/16"
24	4	FN38	Nut, Flange 3/8-16
25	1	FW12S	Washer, Flat, 1/2" SS
26	1	GG1604	Gauge, 4" Liquid Filled 160 PSI
27	1	SC400-2500 *	Kit, CropCare Control Kit 4 Boom Switch
28	1	T854	Control manifold mounting bracket
29	2	T856	Guide, Hose
30	1	T878	SC400 valve mount, large trailers
31	1	M100BRB90	Elbow, 1" Flange x 1" 90° HB
32	2	M100G **	Gasket, Manifold EDPM 1"
33	1	M200100CPG **	Coupling, Reducer 2" to 1"
34	1	M200125BRB90 **	Flange, 2" x 1-1/4" HB 90 Degree Elbow
35	2	M201G **	Gasket, Manifold EPDM 2" w/Rib
36	1	MV100CF **	Valve, Ball 1" Flange x 1" Flange
37	2	FC100 **	Clamp, Flange 1" Std SS
38	2	FC200 **	Clamp, Flange 2" Std SS

* Has component parts breakdown available in owner's manual.

** Used with flange fittings off of pump.

+ Used with stainless steel manifold off of pump.