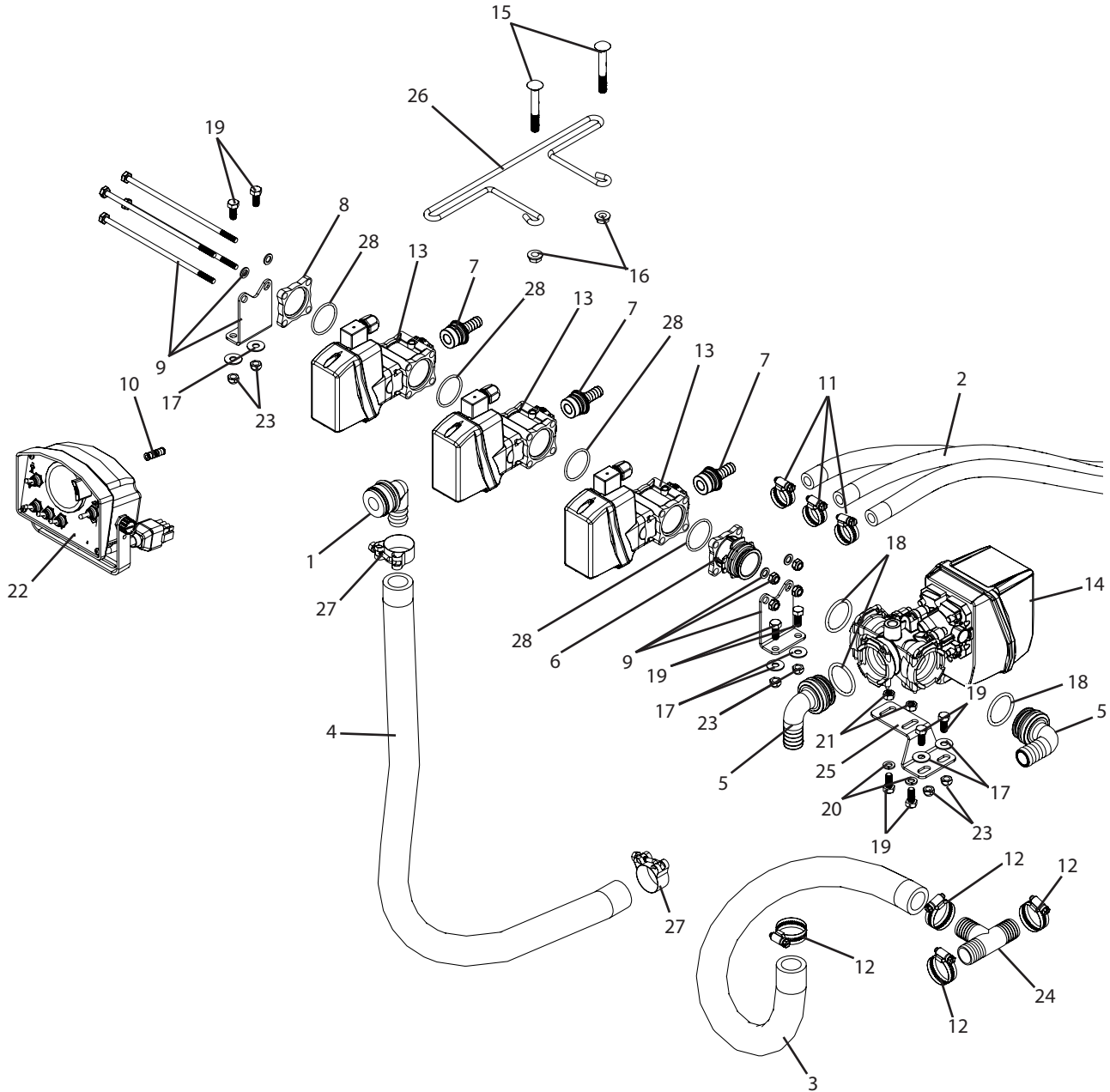


## CTR3-P140-863 Breakdown

Electric valves with Salvarani console, 3 sections, high pressure (200-400 trailers)



## CTR3-P140-863 Breakdown

**Electric valves with Salvarani console, 3 sections, high pressure (200-400 trailers)**

Ref#	Qty.	Part Number	Description
1	1	09184 **	Elbow, 1" HB x 1-1/4" QC
2	80 FT	1008 +	Hose, EPDM Rubber 1/2" 300 PSI
3	3 FT	1016	Hose, EPDM Rubber 1" 300 PSI
4	4 FT	1116	Hose, Nitrile Grizzly 1" 500 PSI
5	2	1191525	Fitting, T5 Male QC to 90° 1" HB
6	1	463000-056	860 male flange with T5 male fork connector
7	3	463001-113-1 +	Fitting, Port Outlet w/O-Ring 1/2" HB
8	1	463011-120	Cap, Outlet Manifold #463
9	1	463900-930	Kit, Bolt 3 Section SS
10	1	466303-084	Coupling, 4mm Pressure Tubing Union
11	6	6806052 +	Hose Clamp, 1/2" - 1-1/16" SS
12	4	6816052	Hose Clamp, 11/16" - 1-1/2" SS
13	3	8630001 *	Valve, 1/2" HB Outlet 290 PSI
14	1	8750652 *	875 Series electric diaphragm pressure relief control valve with T5 fork coupling
15	2	CB38*234G5	Bolt, Carriage 3/8-16 x 2-3/4" Gr 5
16	2	FN38	Nut, Flange 3/8-16
17	6	FW516S	Washer, Flat 5/16" SS
18	3	G11063	O-Ring, EDPM T5 Quick Connect
19	8	H5C516*34	Bolt, Hex 5/16-18 x 3/4" Gr 5
20	2	LW516	Washer, Lock 5/16"
21	2	NC516	Nut, Hex 5/16-18
22	1	P140-3-VP-300PSI	Box, Control 3 Section 300 PSI w/Cables & Gauge Tubing & Tubing Connectors
23	6	SNC516	Nut, Lock Steel 5/16-18
24	1	T100	Tee, 1" HB Nylon
25	1	T340	Regulating valve mount, 4663 Arag Controls
26	1	T485	Mount, Wire Harness Small Trailer
27	2	TB138	Clamp, T-Bolt 1-3/8" - 1-9/16"
28	4	G10071V *+	O-Ring, Manifold Viton #463

\* Additional breakdowns available.

\*+ These are included in 463900-930.

\*\* Only used with convenience package.

+ Used with 3/4" plumbing, replace 1008 with 1012, 6806052 with 6812052, and 463001-113-1 with 463001-119-1.