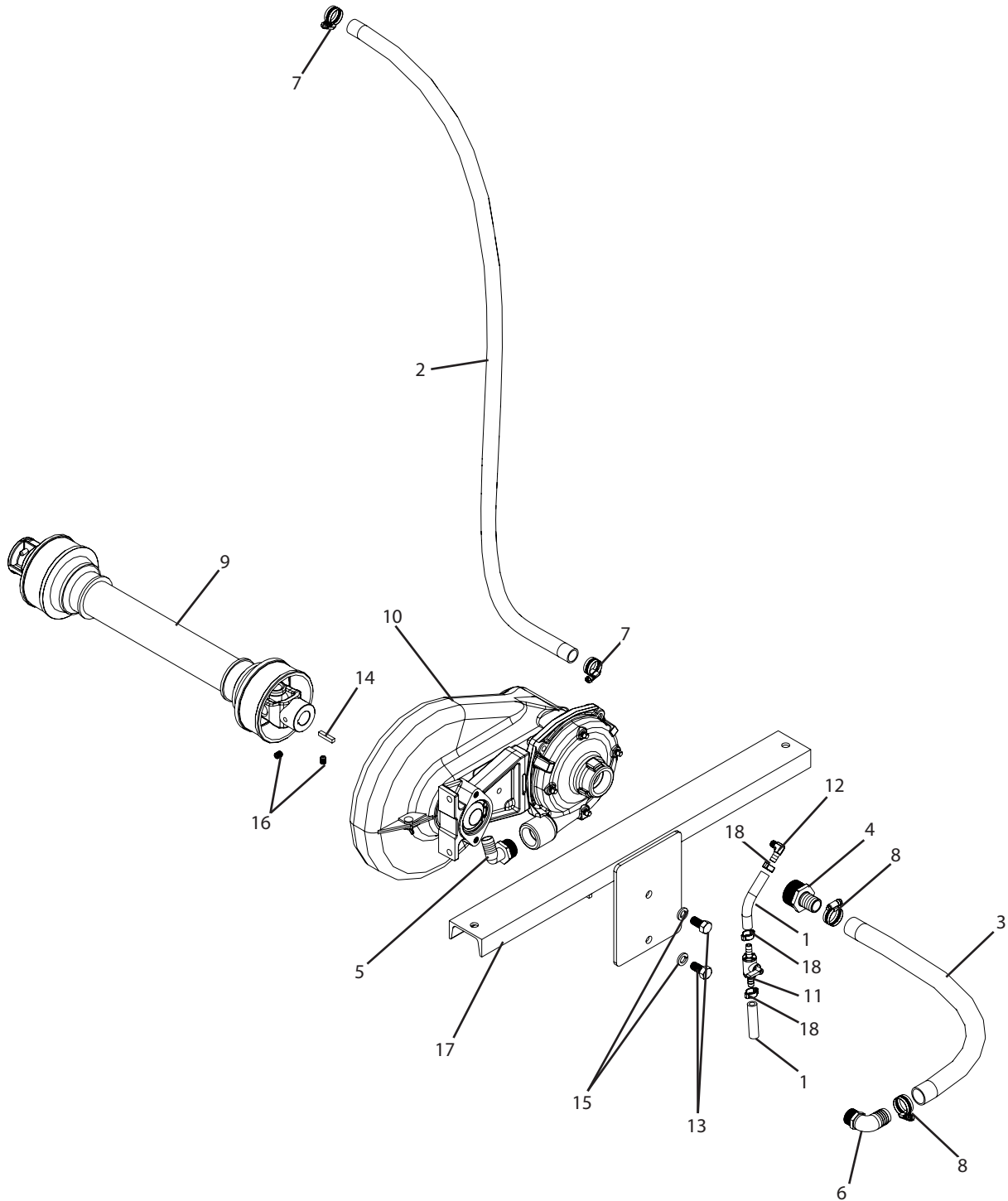


## P3PT-9402C-M Breakdown

### 9402C Hypro belt drive centrifugal



## P3PT-9402C-M Breakdown

### 9402C Hypro belt drive centrifugal

| Ref# | Qty.    | Part Number     | Description  |
|------|---------|-----------------|--|
| 1    | 1.25 FT | 1006            | Hose, EPDM Rubber 3/8" 300 PSI   |
| 2    | 5 FT    | 1012            | Hose, EPDM Rubber 3/4" 300 PSI   |
| 3    | 1 FT    | 3110            | Hose, Suction EPDM Blend 1" 80 PSI   |
| 4    | 1       | 3A114100        | Adapter, Hose 1-1/4" MPT x 1" Barb   |
| 5    | 1       | 3EL10034        | Adapter, Hose Ell 1" MPT x 3/4" HB   |
| 6    | 1       | 3EL34100        | Adapter, Hose 90° 3/4" MPT x 1" HB   |
| 7    | 2       | 6812052         | Hose Clamp, 1/2" - 1-1/4" SS   |
| 8    | 2       | 6816052         | Hose Clamp, 11/16" - 1-1/2" SS   |
| 9    | 1       | 7101051UC007602 | Driveline, PTO BP #1 * 1-3/8" 6 Spline x 1" RB approx. 27.125" oa length collapsed |
| 10   | 1       | 9402C540S *     | Pump, Centrifugal Belt-Driven 1" Shaft 1-1/4" FPT Inlet 1" FPT Outlet              |
| 11   | 1       | 9432            | Valve, Ball 3/8" Hose Barbs  |
| 12   | 1       | EL1838BR        | Adapter, Hose Ell 1/8" MPT x 3/8" HB Brass   |
| 13   | 2       | H5C12*1         | Bolt, Hex 1/2-13 x 1" Gr 5   |
| 14   | 1       | KEY14           | Key, Machine 1/4" x 1-1/4" Sq Ends   |
| 15   | 2       | LW12            | Washer, Lock 1/2"  |
| 16   | 2       | SSC38*12        | Screw, Allen Set 3/8-16 x 1/2"   |
| 17   | 1       | T561            | Pump mount bracket, 9402C on T150 frame  |
| 18   | 3       | W1518           | Clamp, Oetiker 5/8"  |

\* Component parts breakdowns are available for these parts.