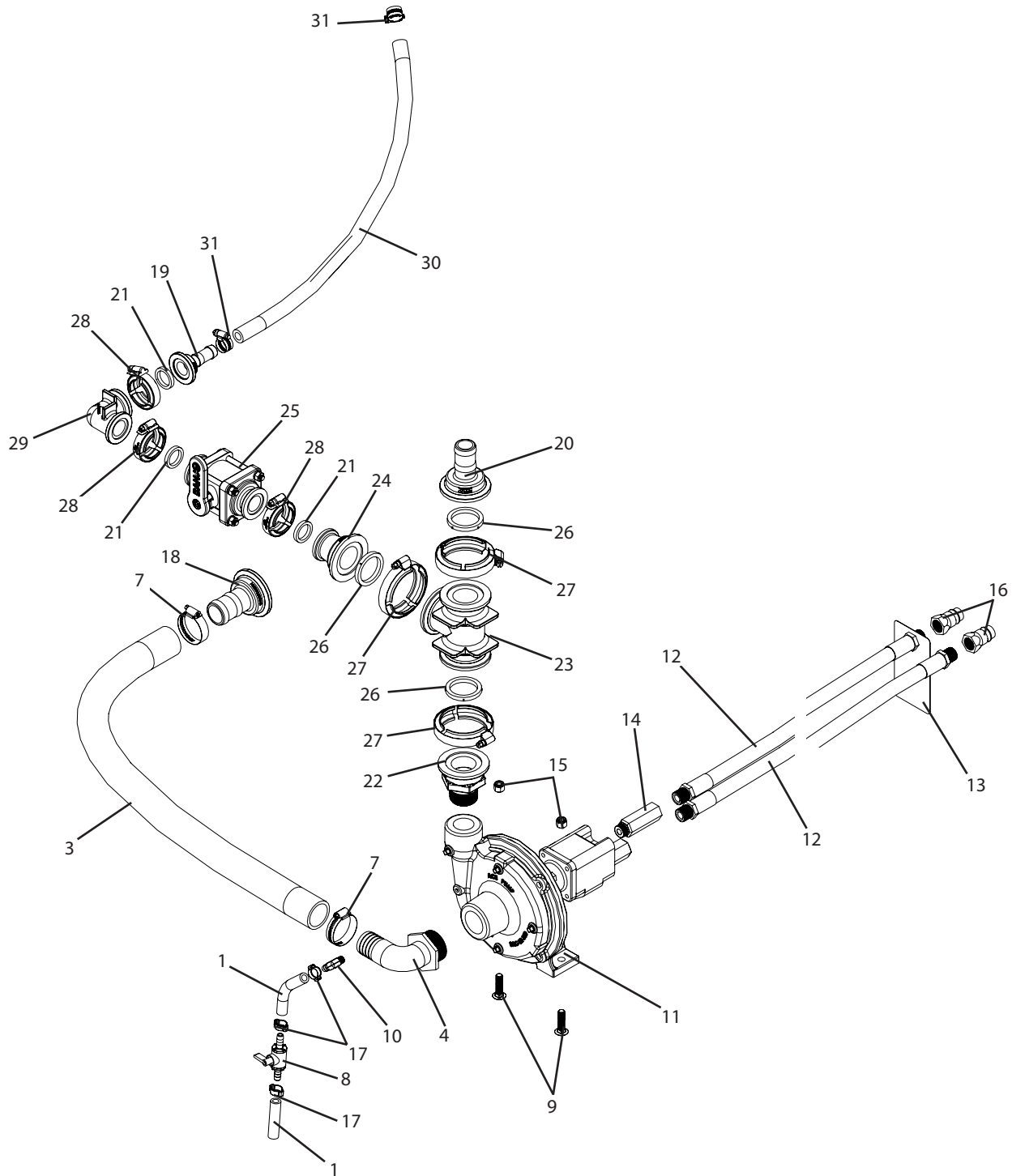


## P3PT-FMC Breakdown

### Ace hydraulic drive centrifugal



## P3PT-FMC Breakdown

### Ace hydraulic drive centrifugal

Ref#	Qty.	Part Number	Description
1	1.25 FT	1206	Hose, EPDM Rubber 3/8" 200 PSI
2	5 FT	10104 **	Hose, EPDM Rubber 1-1/4" 150 PSI
3	3 FT	3112	Hose, Suction EPDM Blend 1-1/2" 60 PSI
4	1	3EL112	Elbow, Hose 90° 1-1/2" MPT x 1-1/2" Barb
5	1	3EL114 **	Elbow, Hose 90° 1-1/4" MPT x 1-1/4" Barb
6	2	6820052 **	Hose Clamp, 3/4" - 1-3/4" SS
7	2	6824052	Hose Clamp, 1" - 2" SS
8	1	9432	Valve, Ball 3/8" Hose Barbs
9	2	CB38*112G5	Bolt, Carriage 3/8-16 x 1-1/2" Gr 5
10	1	EL1838BR	Adapter, Hose Ell 1/8" MPT x 3/8" HB Brass
11	1	FMC-150-HYD-206 *	Pump, Ace Centrifugal 7 GPM Hyd Drive (150 Series) 1-1/2" FPT Suction x 1-1/4" FPT Discharge
12	2	HH1207-1	7' Hose OAL, 1/2" W/HY08-08MP Ends
13	1	HYDRETTAG	Tag, Yellow Return Line On Hyd Pump
14	1	LS-206N	Limiter, Flow 7GPM 1/2" NPT x #8 (206 Hyd Motor)
15	2	NNC38	Nut, Lock Nylon 3/8-16
16	2	S71-4	Tip, Hyd Male 1/2" FPT Fits S20-S40-S70
17	3	W1518	Clamp, Oetiker 5/8"
18	1	M200150BRB	Fitting, Flange 1-1/2" HB x 2" Flange
19	1	M100075BRB +	Fitting, Flange 3/4" HB x 1" Flange
20	1	M200125BRB +	Fitting, Flange 1-1/4" HB x 1" Flange
21	3	M100G +	Gasket, Manifold EDPM 1"
22	1	M200125MPT +	Flange, 1-1/4" MPT x 1" Flange
23	1	M200TEE +	Tee, Flange 1" Tee
24	1	M200100CPG +	Coupling, Reducer 2" to 1"
25	1	MV100CF +	Valve, Ball 1" Flange x 1" Flange
26	3	M201G +	Gasket, Manifold EPDM 2" w/Rib
27	3	FC200 +	Clamp, Flange 2" Std SS
28	3	FC100 +	Clamp, Flange 1" Std SS
29	1	M100CPG90 +	Coupling, 90° 1" Flange x 1" Flange
30	2 FT	1008 +	Hose, EPDM Rubber 1/2" 300 PSI
31	2	6806052 +	Hose Clamp, 1/2" - 29/32" SS

\* Has component parts breakdown available.

\*\* Used with rinse, education, and quick fill.

+ Used without rinse, education, and quick fill