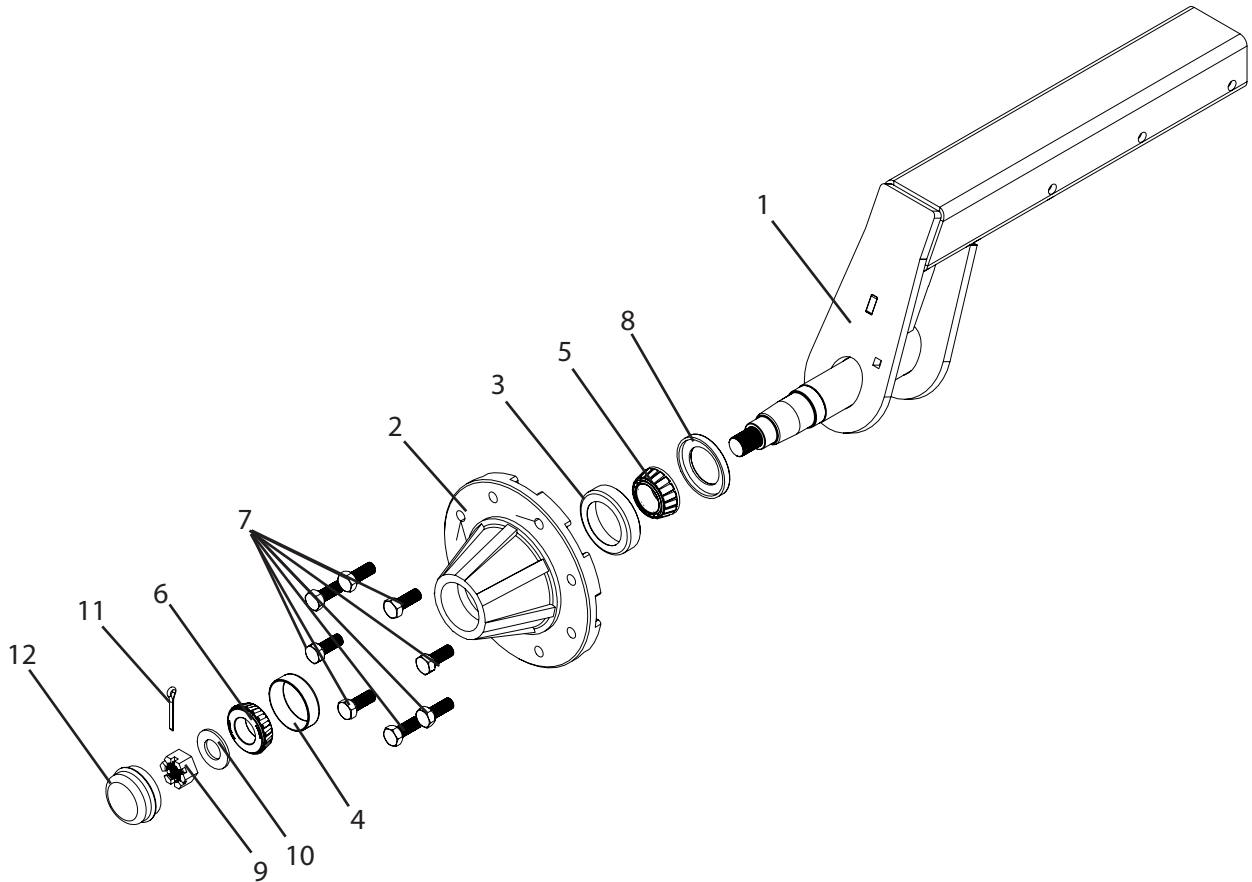


## T474 Breakdown

### Axle Weldment, 20" Wheel



\* Replaced with part # 6W206 when used with a speed sensor.

Ref#	Qty.	Part Number	Description
1	1	---	Axle Weldment, 20" Wheel
2	1	HO5000	Hub cupped only (no bearings) 5000#
3	1	LM603011	Bearing Cup 3.0625" OD
4	1	LM48510	Bearing Cup 2.562" OD
5	1	LM603049	Tapered Bearing 1.7812" ID
6	1	LM48548	Tapered Bearing 1.375" ID
7	8	SP5001 *	Wheel bolt 5,000 lb capacity 9/16-18 x 1.125"
8	1	S5000	Seal 2.00" ID x 3.006" OD x .375" W
9	1	SP5003	Castle Nut 1"-14 Fine
10	1	SP5004	Sae washer 1"
11	1	CT316x134	Cotter pin 3/16" x 1 3/4"
12	1	D5000	Dust cap for 5000 lb hub 2.562 OD