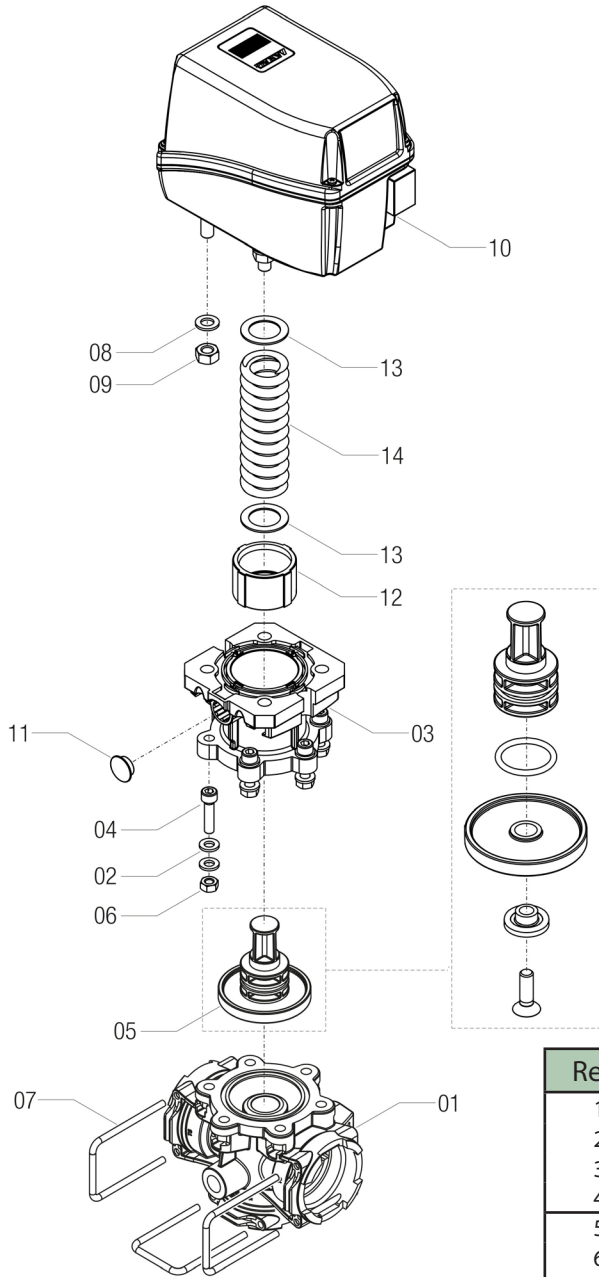


## 8750652 Breakdown

### 875 Series electric diaphragm pressure relief control valve with T5 fork coupling



| Ref# | Qty. | Part Number | Description                                       |
|------|------|-------------|---|
| 1    | 1    | 475050.510  | Valve Regulating Pressure T5 Connector            |
| 2    | 12   | B202F0      | Washer 6,4X12,5X1,6 INOX                          |
| 3    | 1    | 4652600.110 | Valve 465 Motor Support                           |
| 4    | 6    | V1C24K      | Screw, TCEI 6X25                                  |
| 5    | 1    | 4652005.180 | Electric valve kit                                |
| 6    | 6    | B10241      | Nut, M6X10X5                                      |
| 7    | 3    | 010005      | Connector, Fork T5 QC                             |
| 8    | 4    | B202H0      | Washer 8,4X15X1,5 INOX                            |
| 9    | 4    | B10251      | Nut M8X13X6.5 UNI5588 INOX                        |
| 10   | 1    | 8650951     | Motor Regulating Valve .R=1:183,3 36W 24MM TR10X2 |
| 11   | 1    | 4542233.057 | Lever Plug 1/2-3/4-1-1/4-1/2 Green                |
| 12   | 1    | 4652600.111 | Security Bushing                                  |
| 13   | 2    | 471502-135  | Spacer D.20X30X1                                  |
| 14   | 1    | 465002-120  | Pressure Spring Unit, 20 BAR                      |