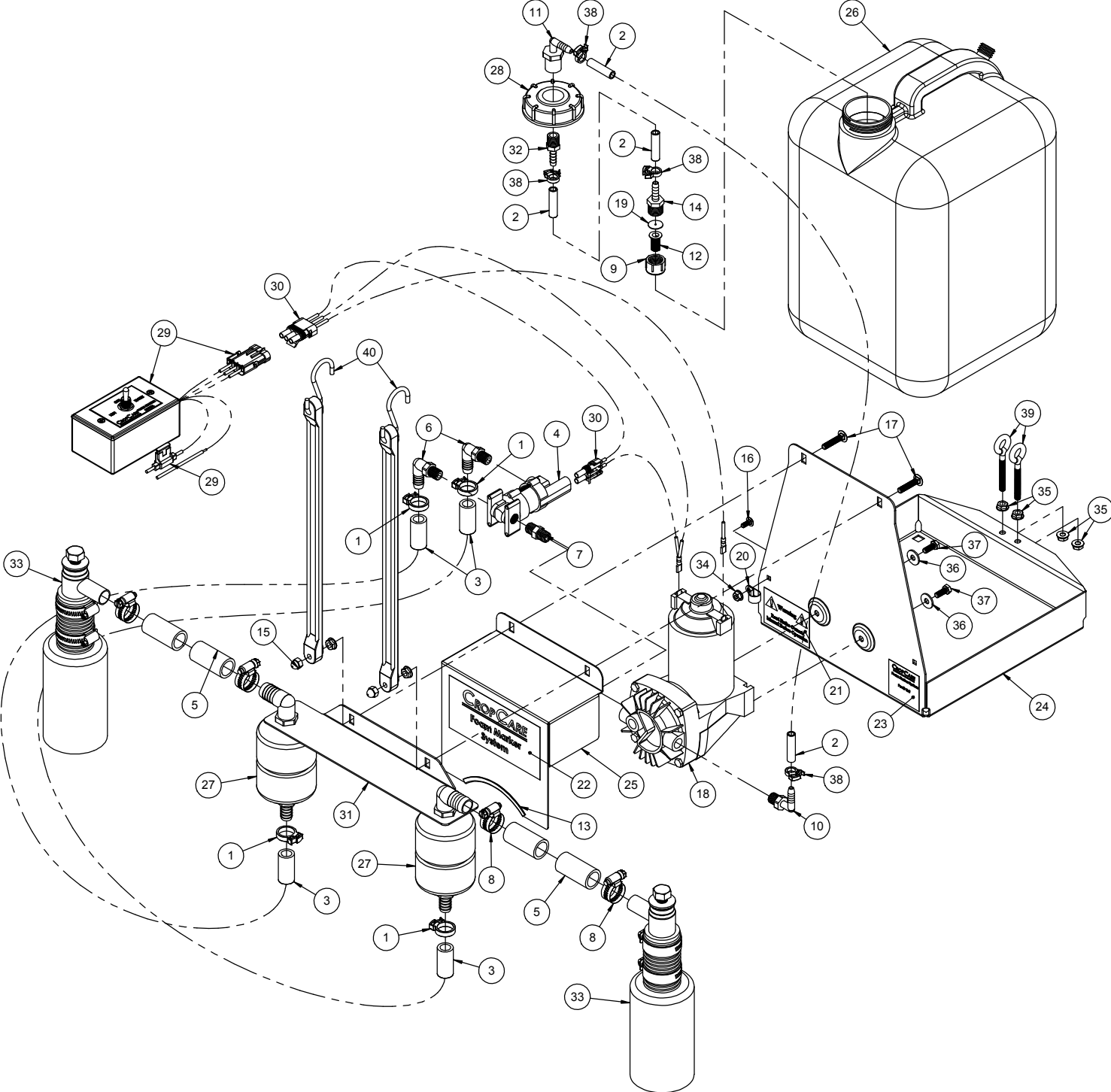


F1500AP



| REF # | QTY. | PART NUMBER | DESCRIPTION |
|-------|------|-------------|---|
| 1 | 4 | HC075 | Snap grip clamp .75" - .67" |
| 2 | 4 | 1954 | Vinyl tube 1/4" x 3/8", 55 psi |
| 3 | 4 | 1957 | Vinyl tubing 1/2" x 3/4", 30 psi |
| 4 | 1 | 2204AWP | Solenoid valve, 3 way, 12v, 55 psi, 1/4" |
| 5 | 4 | 3003 | Suction hose clear PVC 3/4", 85 psi |
| 6 | 2 | 3EL1412 | 1/4" MP x 1/2" barb poly elbow hose adapter |
| 7 | 1 | 6468 | 1/4" MPT brass nipple w/ hex |
| 8 | 4 | 6810 | stainless hose clamp, 1/2" - 1 1/16" |
| 9 | 1 | 38027 | Poly nozzle cap |
| 10 | 1 | 3EL1414 | 1/4" MP x 1/4" barb poly elbow hose adapter |
| 11 | 1 | 3EL14F | 1/4" FP x 1/4" barb poly elbow hose adapter |
| 12 | 1 | 8079PP100 | Stainless nozzle screen, 50 mesh, red |
| 13 | 1 | 8507K72 | Rubber trim strip |
| 14 | 1 | A3814BR | Brass adapter 3/8" MPT x 1/4" barb |
| 15 | 2 | AN14 | 1/4" acorn nut |
| 16 | 1 | CB1024*12 | carriage bolt, #10-24 x 1/2" |
| 17 | 2 | CB14*114G5 | carriage bolt, 1/4-20 x 1 1/4" grade 5 |
| 18 | 1 | CM40 | Air compressor, Salvarani, 12 volt |
| 19 | 1 | CP491645 | Orifice plate stainless steel |
| 20 | 1 | DC2406 | Loom clamp, nylon 3/8" |
| 21 | 1 | DE39 | Read owner's manual warning decal |
| 22 | 1 | DE51 | Foam marker front cover decal |
| 23 | 1 | DE52 | Specifications and manufacturer decal |
| 24 | 1 | F1501A | Foamer frame, 5 gallon |
| 25 | 1 | F1502A | Compressor Cover |
| 26 | 1 | F1503 | Foamer tank, 5 gallon |
| 27 | 2 | F1504A | Mixing Chamber, F1500A, F1200A |
| 28 | 1 | F1505 | foamer tank lid |
| 29 | 1 | F1507 | Foamer wiring harness, power end |
| 30 | 1 | F1509A | Wiring harness, compressor end |
| 31 | 1 | F1521 | mixing chamber mount |
| 32 | 1 | F2506 | Adapter w/ breather hole, 1/4" x 1/4" |
| 33 | 2 | F510AP | Complete foam discharge tube |
| 34 | 1 | FN1024 | flange nut, 10-24 |
| 35 | 6 | FN14 | flange nut, 1/4-20 |
| 36 | 2 | FW6M | flat washer, 6mm |
| 37 | 2 | H6*16M | metric bolt, 6 x 16mm 1.0 pitch |
| 38 | 4 | HC041 | Snap grip clamp .41" - .36" size BB |
| 39 | 2 | N221119 | eyebolt 3/8" x 5" |
| 40 | 2 | TS15 | 15" tarp strap |