

CROPCARE

Equipment Built For You

PaulB LLC

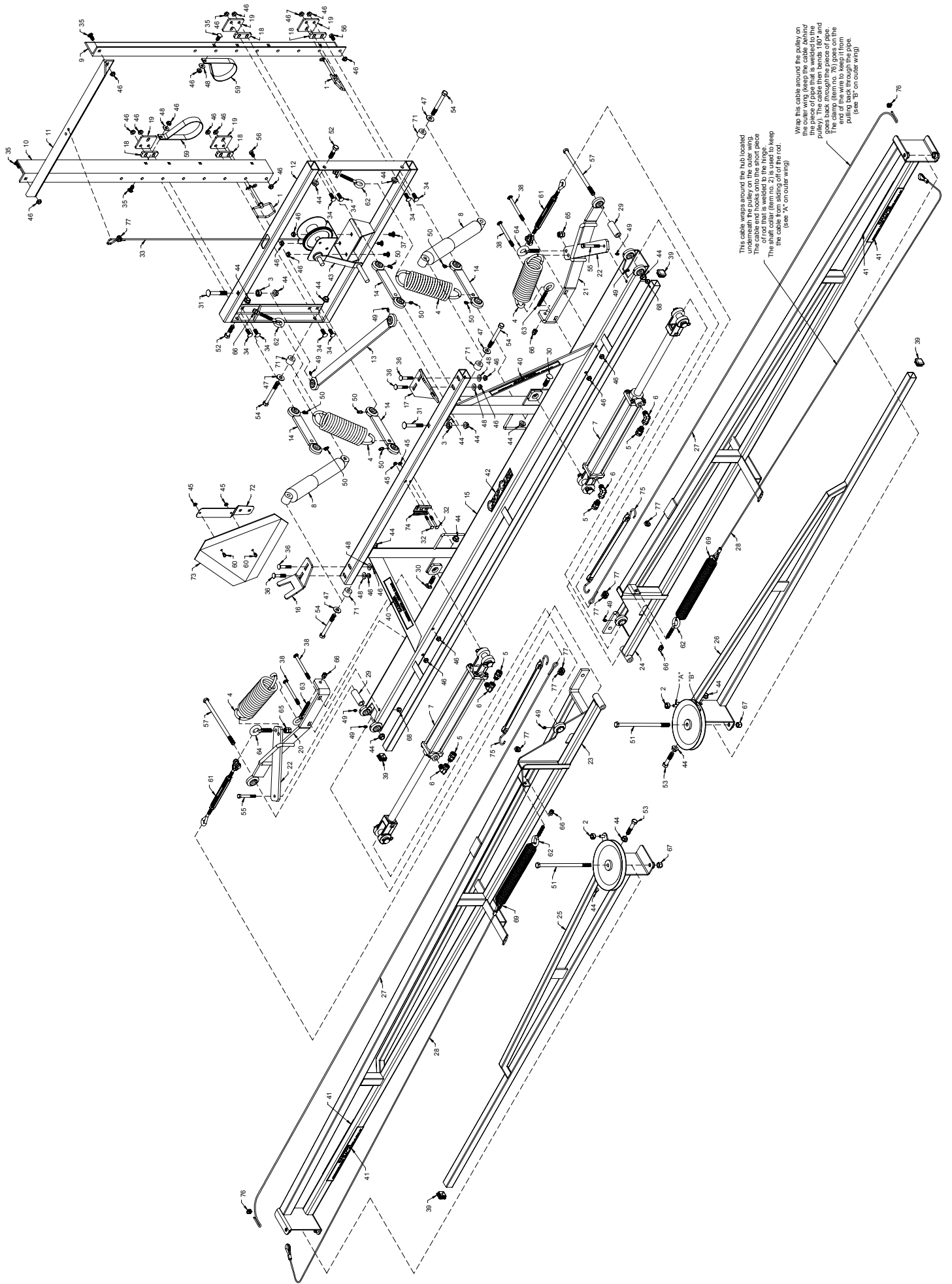
50 Woodcorner Road | Lititz PA 17543

717-738-7350

www.CropCareEquipment.com

Model # BF40H

40' Hydraulic X-Fold Boom Breakdown



The cable wraps around the hub located underneath the pulley on the outer wing. The cable is then attached to the end of rod that is welded to the hinge. The shaft collar (item no. 2) is used to keep the cable from sliding off the end of the rod. (see 'A' on outer wing)

Wrap the cable around the pulley on the outer wing (keep the cable below the piece of pipe that is welded to the outer wing). The cable is then attached to the end of rod that is welded to the hinge. The clamp (item no. 70) goes on the outer wing and is used to pull the cable back through the pipe. (see 'B' on outer wing)

REF#	QTY.	PART #	DESCRIPTION
1	2	01518	hitch pin - 3/8" x 3 1/2"
2	2	0438P	7/16" shaft collar
3	2	0500P	1/2" shaft collar
4	4	12978	spring 3" x 10"
5	4	1404R-06-06-.025	restrictor swivel 3/8" mpt .025 orifice
6	4	1501-06-06	hyd elbow 90 degree 3/8" mpt x 3/8" fpt swivel
7	2	20TL14	hydraulic cylinder - 2" bore 14" stroke
8	2	36081	heavy duty shock absorber
9	1	BF30HB10	boom mounting angle, right
10	1	BF30HB11	boom mounting angle, left
11	1	BF30HB12	top angle
12	1	BF30HB13	boom slider frame
13	1	BF30HB14	top link for shock frame
14	4	BF30HB15	side link for shock frame
15	1	BF30HB16	center frame
16	1	BF30HB21	boom prop, left
17	1	BF30HB22	boom prop, right
18	4	BF30HB23	slide clip spacer
19	4	BF409	boom slide clip
20	1	BF40H10	breakaway spring mount, left
21	1	BF40H11	breakaway spring mount, right
22	2	BF40H12	breakaway spring link
23	1	BF40H13	inner wing, left
24	1	BF40H14	inner wing, right
25	1	BF40H15	outer wing, left
26	1	BF40H16	outer wing, right
27	2	BF40H17	3/16" stainless steel cable kit
28	2	BF40H18	5/32" stainless steel cable kit
29	2	BF40H19	hinge spacer
30	2	CB12*2G5	carriage bolt 1/2-13 x 2" Gr 5
31	2	CB12*312G5	carriage bolt 1/2-13 x 3 1/2" Gr 5
32	2	CB14*212G5	carriage bolt 1/4-20 x 2 1/2" Gr 5
33	1	CB316S	3/16" stainless steel cable 5' lg.
34	8	CB38*114G5	carriage bolt 3/8-16 x 1 1/4" Gr 5
35	4	CB38*1G5	carriage bolt 3/8-16 x 1" Gr 5
36	4	CB38*214G5	carriage bolt 3/8-16 x 2 1/4" Gr 5
37	3	CB38*34G5	carriage bolt 3/8-16 x 3/4" Gr 5
38	4	CB38*5G5	carriage bolt 3/8-16 x 5" Gr 5
39	4	CC5520	poly cap 1 1/4" square

REF#	QTY.	PART #	DESCRIPTION
40	2	DE24	decals "DANGER MOVING PARTS"
41	4	DE26	decals "CAUTION SWINGING BOOM AREA"
42	1	DE46	decals "CROP CARE" 1.9" x 8.8"
43	1	DLB800	800 lb hand winch w/ brake
44	16	FN12	flange nut 1/2-13
45	4	FN14	flange nut 1/4-20
46	25	FN38	flange nut 3/8-16
47	4	FW12	flat washer 1/2"
48	6	FW38	flat washer 3/8"
49	8	GF101	grease fitting 1/4-28 straight
50	8	GF102	grease fitting 1/4-28 45 degree
51	2	H5C12*10	hex head bolt 1/2-13 x 10" Gr 5
52	2	H5C12*2	hex head bolt 1/2-13 x 2"
53	2	H5C12*212	hex head bolt 1/2-13 x 2 1/2"
54	4	H5C12*412	hex head bolt 1/2-13 x 4 1/2"
55	2	H5C38*3	hex head bolt 3/8-16 x 3" Gr 5
56	2	H5C38*34	hex head bolt 3/8-16 x 3/4"
57	2	H8C12*10	hex head bolt 1/2-13 x 10" Gr 8
58	1	HK30	hydraulic hose kit
59	2	HS1000	hose strap
60	2	MR14*12	machine screw 1/4-20 x 1/2"
61	2	N177390	turnbuckle 3/8" x 6" eye & jaw
62	4	N221267	eyebolt 3/8" x 4"
63	2	N221275	eyebolt 3/8" x 5"
64	2	N221309	eyebolt 1/2" x 4"
65	4	NC12	hex nut 1/2-13
66	12	NC38	hex nut 3/8-16
67	2	NNC12	nylon lock nut 1/2-13
68	2	NNC38	nylon lock nut 3/8-16
69	2	S-359	spring 1 3/4" x 14"
70	4	S71-4	hydraulic tip male 1/2" fpt
71	4	shock spacer	spacer 1/2" ID x 1 3/16" OD x 7/8" lg.
72	1	SMVB	SMV spade
73	1	SMVP	SMV sign plastic
74	1	SMVS	SMV socket
75	2	TS15	tarp strap 15"
76	2	WRC18	wire rope clamp 1/8"
77	7	WRC316	wire rope clamp 3/16"