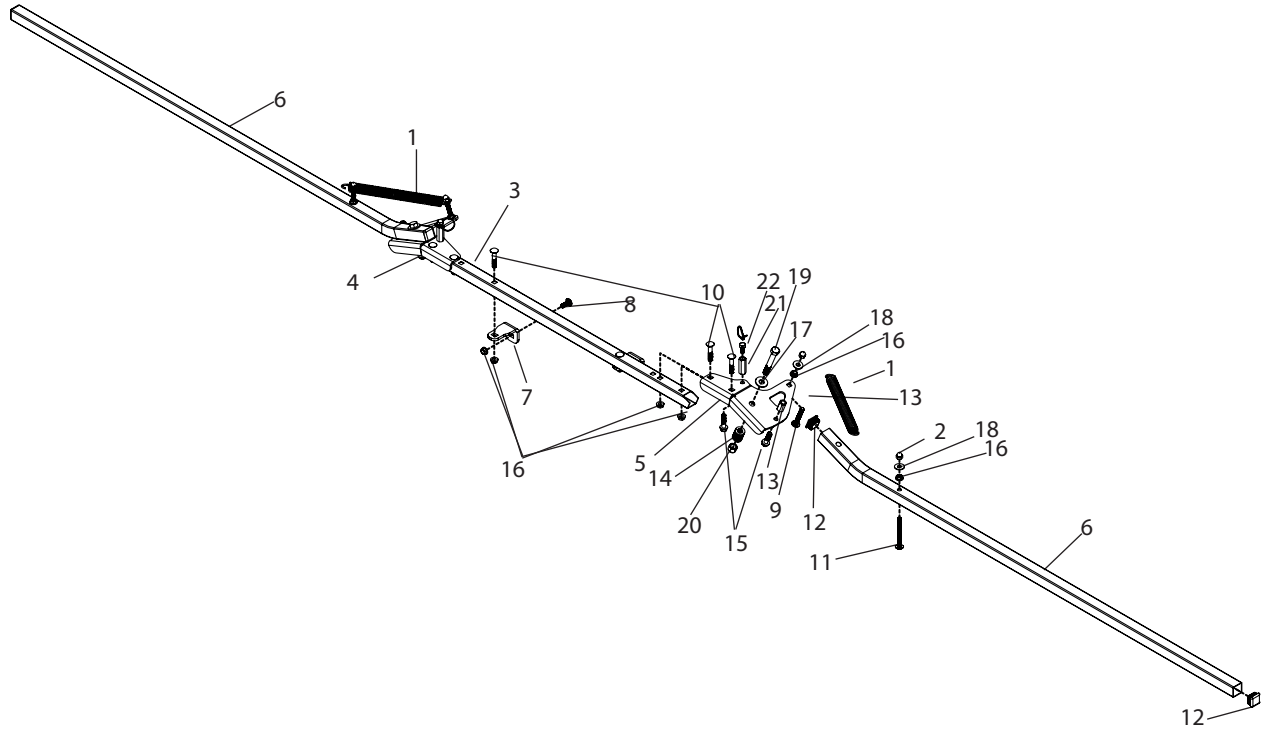


MX160 Breakdown

Boom, 13' Manual Fold



| Ref # | Qty. | Part Number | Description |
|-------|------|-------------|---|
| 1 | 2 | 33*TS | Spring, Extension 1" x 8" (8.5" OAL) |
| 2 | 4 | AN38 | Nut, Acorn 3/8-16 |
| 3 | 1 | BF1220 | 13' Manual Fold Boom, center tube |
| 4 | 1 | BF1221 | 13' Manual Fold Boom, inner hinge, left |
| 5 | 1 | BF1222 | 13' Manual Fold Boom, inner hinge, right |
| 6 | 2 | BF1223 | 13' Manual Fold Boom, outer wing |
| 7 | 2 | BF1224 | 13' Manual Fold Boom, mounting brackets |
| 8 | 2 | CB38*1G5 | Bolt, Carriage 3/8-16 x 1" Gr 5 |
| 9 | 2 | CB38*212G5 | Bolt, Carriage 3/8-16 x 2-1/2" Gr 5 |
| 10 | 6 | CB38*2G5 | Bolt, Carriage 3/8-16 x 2" Gr 5 |
| 11 | 2 | CB38*312G5 | Bolt, Carriage 3/8-16 x 31/2" Gr 5 |
| 12 | 4 | CC5520 | Cap, Poly Square 1-1/4" x 14-20 Ga Blk |
| 13 | 2 | CN38*118 | Nut, Coupling 3/8-16 x 1 1/8" |
| 14 | 2 | D-1335 | Spring, Die 1/2" Rod ID x 2" x .225x.158 Wire 840lbs/in |
| 15 | 4 | FB38*112G5 | Bolt, Flange 3/8-16 x 1 1/2" Gr 5 |
| 16 | 12 | FN38 | Nut, Flange 3/8-16 |
| 17 | 2 | FW12 | Washer, Flat 1/2" USS |
| 18 | 4 | FW38 | Washer, Flat 3/8" |
| 19 | 2 | H5C12*312 | Bolt, Hex 1/2-13 x 3 1/2" Gr 5 |
| 20 | 2 | NNC12 | Nut, Lock Nylon 1/2-13 |
| 21 | 2 | CN38 | Nut, Coupling 3/8-16 x 1-3/4" |
| 22 | 2 | H5C38*34 | Bolt, Hex 3/8-16 x 3/4" Gr 5 |