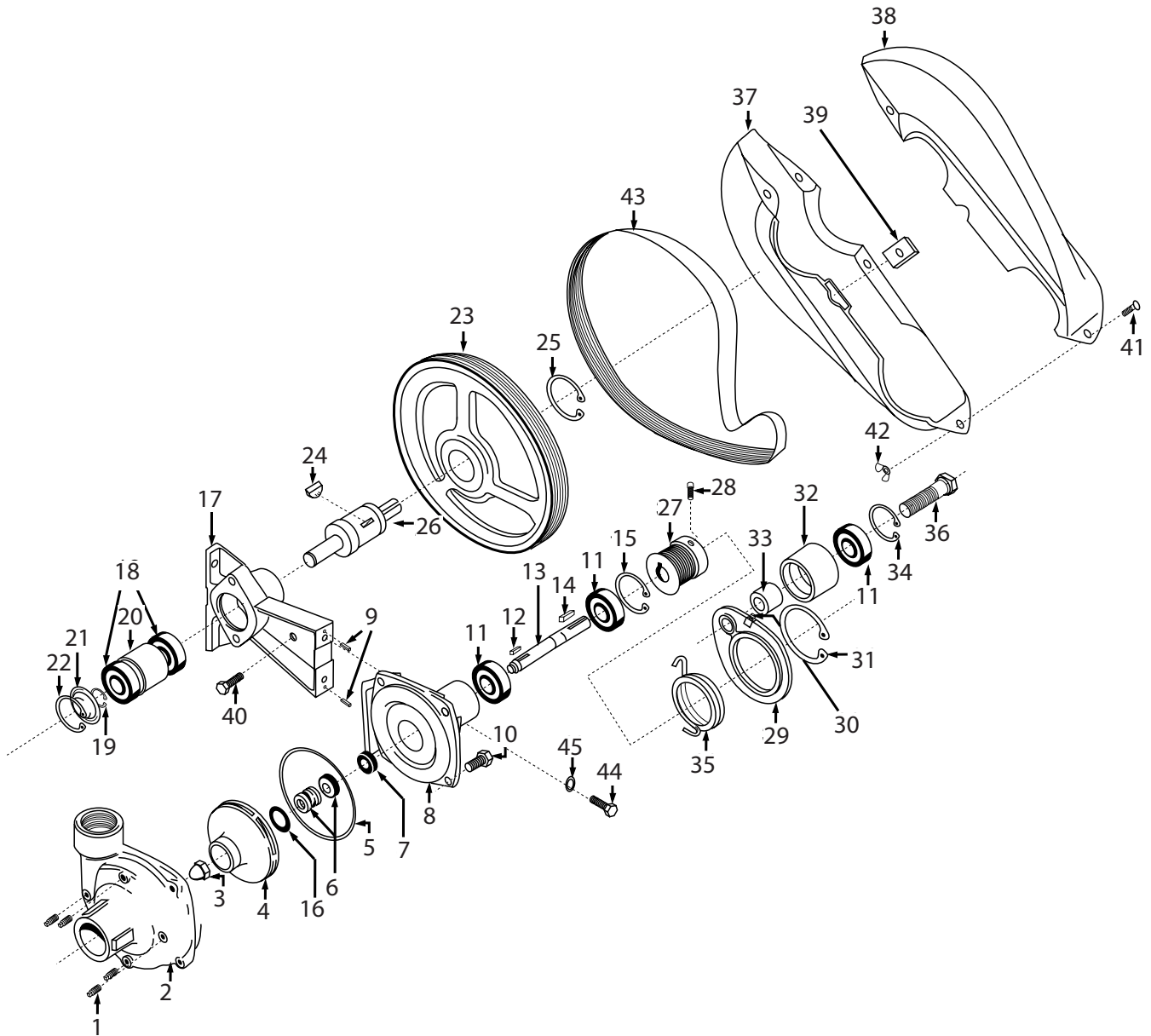


9402C540S Breakdown

Pump, Centrifugal Belt-Driven 1" Shaft 1-1/4" FPT Inlet 1" FPT Outlet



9402C540S Breakdown

Pump, Centrifugal Belt-Driven 1" Shaft 1-1/4" FPT Inlet 1" FPT Outlet

Ref#	Qty.	Part Number	Description
1	4	2406-0007	Drain Plug
2	1	0150-9200C	Pump Casing (Model 9402C)
3	1	2253-0002	Impeller Nut
4	1	0401-9100P	Impeller (Nylon) (standard)
5	1	1720-0083 *	O-Ring
6	1	2120-0009 *	Mechanical Seal (standard Viton)
7	1	1410-0056	Slinger Ring
8	1	0750-9200C	Mounting Flange
9	2	1600-0070	Roll Pin
10	4	2210-0020	Bolt
11	3	2000-0010	Ball Bearing
12	1	1610-0015	Key
13	1	0505-9200	Pump Shaft
14	1	1610-0004	Key
15	1	1820-0013	Bearing Retainer
16	1	1700-0100 *	Gasket
17	1	0703-9400D	Pedestal Bracket
18	2	2001-0006	Driver Shaft Bearings
19	1	1810-0012	Driver Shaft Bearing Retainer Ring
20	1	1410-0094	Bearing Spacer
21	1	2840-0053	End Cap (label)
22	1	1820-0032	Bearing Bore Retaining Ring
23	1	3115-0031	Driver Pulley (540 rpm)
24	1	1610-0033	Key (Driver Pulley)
25	1	1810-0031	Retaining Ring (Driver Pulley)
26	1	0503-9400	Shaft (1" solid)
27	1	3115-0034	Driven Pulley (5/8" dia. bore)
28	2	2230-0003	Set Screw for Driven Pulley
29	1	0706-9400C	Idler Bracket (Cast Iron Pumps)
30	1	2405-0003	Grease Zerk Fitting
31	1	1810-0036	Retaining Ring (Idler Bracket,Cast Iron)
32	1	3115-0036	Idler Pulley
33	1	1410-0095	Spacer (Idler Pulley)
34	1	1820-0013	Retaining Ring (Idler Pulley)
35	1	1900-0156	Torsion Spring (Idler for Cast Iron)
36	1	2210-0111	Idler Bolt/Shaft
37	1	2840-0075	Belt Shield
38	1	2840-0076	Belt Shield
39	1	1520-0062	Bracket for Belt Shield
40	1	2210-0021	Attachment Bolt for Shield

* Parts included in 3430-0476, Repair Kit (for 540 rpm drives).

9402C540S Breakdown

Pump, Centrifugal Belt-Driven 1" Shaft 1-1/4" FPT Inlet 1" FPT Outlet

Ref#	Qty.	Part Number	Description
41	4	2240-0017	Assembly Bolts for Shield
42	4	2252-0002	Assembly Nuts for Shield
43	1	3100-0006 *	Poly V-Belt (540 rpm)
44	2	2210-0055	Bolts for Pump to Bracket
45	2	2260-0006	Lock Washers for Bracket Bolts

* Parts included in 3430-0476, Repair Kit (for 540 rpm drives).