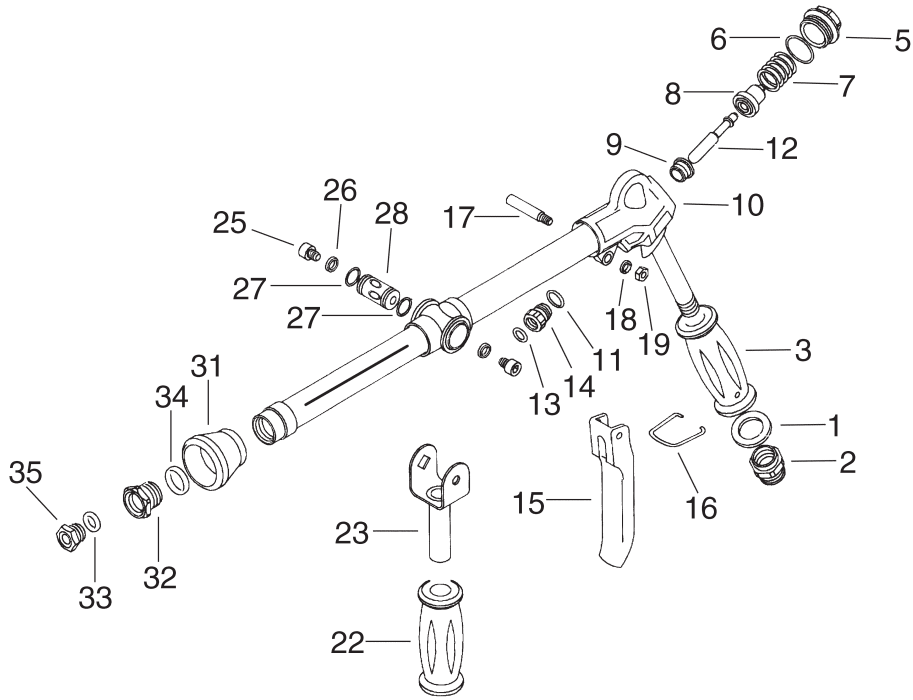


3381-0010 Breakdown

Spray gun, adjustable pattern, 1/2" MNPT inlet



3381-0010 Breakdown

Spray gun, adjustable pattern, 1/2" MNPT inlet

Ref#	Qty.	Part Number	Description
1	1	9920-232	Washer
2	1	9920-230B	Inlet Port
3	1	9920-193	Hand Grip
5	1	9920-231	Plug
6	1	9920-3100 *	O-ring
7	1	9920-233	Spring
8	1	9920-71903.1 *	Poppet
9	1	9920-129 *	Seat
10	1	9920-7.1615.3	Body, Welded Assy for -0010
11	1	9920-2050 *	O-ring
12	1	9920-239	Plunger
13	1	9920-109 *	O-ring
14	1	9920-241	Guide
15	1	9920-246	Trigger
16	1	9920-245C	Locking Clip
17	1	9920-194	Pin
18	1	9920-1751	Washer
19	1	9920-5587-68	Nut
22	1	9920-192	Front Grip
23	1	9920-247	Bracket
25	2	9920-5931	Bolt
26	2	9920-1751	Washer
27	2	9920-119 *	O-ring
28	1	9920-237	Regulator
31	1	9920-183	Shroud
32	1	9920-158	Nozzle retainer
33	1	9920-115 *	O-ring
34	1	9920-124 *	O-ring
35	1	Nozzles	3385-2300, -3000, -3500, -4000, -4500, -5000, -5500, -6000, -7000
36	1	9910-110130	Hose Barb, wing nut, gasket

* Components are available to order in Repair Kit 9920-KIT10.

3381-0010 Breakdown

Spray gun, adjustable pattern, 1/2" MNPT inlet

HYDRO MODEL NUMBER	ORIFICE DIAMETER (mm)	EQUIVALENT NOZZLE NUMBER	PERFORMANCE	PRESSURE SETTING (PSI) **													
				200 PSI	350 PSI	500 PSI	600 PSI	650 PSI	700 PSI	850 PSI							
3385-2300	2.3	14	-0010 Flow (GPM)	2.1	2.7	3.6	3.7	4.4	3.7	4.8	3.9	5.0	4.0	5.2	4.4	5.5	
			-0011 Flow (GPM)	2.8	3.7	4.5	4.9	5.1	5.1	5.3	5.3	5.7	5.7				
			MAX THROW (FT)*	11.4	29.0	12.9	33.9	14.8	37.9	16.6	41.5	17.0	41.7	17.7	42.0	19.0	45.7
3385-3000	3.0	23	-0010 Flow (GPM)	2.9	5.3	3.8	6.8	4.7	8.1	5.2	8.9	5.4	9.2	5.6	9.6	6.2	10.6
			-0011 Flow (GPM)	5.3	5.3	6.8	6.9	8.0	8.2	8.8	9.1	9.1	9.4	9.4	9.8	10.3	10.7
			MAX THROW (FT)*	11.7	29.2	12.9	33.9	13.8	36.2	15.6	40.8	16.0	40.7	16.2	42.0	17.0	44.1
3385-3500	3.5	29	-0010 Flow (GPM)	3.7	7.4	4.9	9.7	6.1	11.5	6.7	12.6	6.9	13.1	7.2	13.5	7.9	14.6
			-0011 Flow (GPM)	7.0	7.6	9.0	9.8	10.7	11.7	11.5	12.8	11.9	13.4	12.2	13.9	12.8	15.2
			MAX THROW (FT)*	13.6	36.2	19.0	41.2	22.6	45.3	25.5	50.0	25.5	51.0	27.0	51.5	28.8	54.0
3385-4000	4.0	40	-0010 Flow (GPM)	4.2	9.5	5.6	12.1	6.8	14.4	7.5	15.8	7.7	16.5	8.0	17.1	8.7	18.7
			-0011 Flow (GPM)	8.1	9.5	10.3	12.2	12.0	14.6	13.0	16.0	13.4	16.7	13.7	17.3	14.5	19.0
			MAX THROW (FT)*	15.1	37.7	20.6	42.8	24.3	47.0	27.2	53.0	27.2	54.0	28.5	55.0	29.0	59.0
3385-4500	4.5	54	-0010 Flow (GPM)	4.8	11.5	6.2	14.9	7.4	17.9	8.2	19.7	8.5	20.5	8.8	21.2	9.4	23.2
			-0011 Flow (GPM)	9.6	11.6	11.6	15.1	13.3	18.1	14.3	19.7	14.7	20.6	15.2	21.4	16.3	23.5
			MAX THROW (FT)*	18.1	39.2	22.2	44.3	26.0	50.1	30.6	54.0	30.6	56.0	31.0	57.0	31.5	62.0
3385-5000	5.0	67	-0010 Flow (GPM)	5.4	13.1	7.0	16.8	8.4	20.2	9.2	22.0	9.6	22.8	9.6	23.8	10.7	25.9
			-0011 Flow (GPM)	10.2	13.2	12.5	17.0	14.6	20.4	15.9	22.0	16.4	23.0	17.0	23.6	18.4	25.6
			MAX THROW (FT)*	19.6	40.7	23.8	47.0	27.5	53.3	32.3	59.0	32.3	61.0	32.8	62.0	32.8	67.0
3385-5500	5.5	79	-0010 Flow (GPM)	6.0	15.0	7.7	19.2	9.3	23.1	10.2	25.4	10.6	26.5	11.0	27.6	12.0	30.5
			-0011 Flow (GPM)	10.7	15.4	13.7	20.2	16.1	24.1	17.5	26.2	18.2	27.1	18.7	28.0	20.2	29.8
			MAX THROW (FT)*	19.6	42.2	23.8	50.7	29.0	57.0	34.0	63.0	34.0	64.0	34.5	65.0	34.5	70.0
3385-6000	6.0	91	-0010 Flow (GPM)	5.9	16.6	7.6	21.0	8.6	25.6	9.2	27.8	9.6	29.0	9.7	30.1	10.2	32.0
			-0011 Flow (GPM)	11.3	17.2	14.6	21.6	16.9	25.8	18.6	28.4	19.6	29.6	20.3	30.9	21.9	34.3
			MAX THROW (FT)*	21.1	43.7	25.3	54.0	30.7	60.0	35.6	66.0	35.6	67.0	36.0	68.0	36.0	74.0
3385-7000	7.0	117	-0010 Flow (GPM)	6.7	20.0	8.8	26.2	10.8	30.5	12.1	33.4	12.6	34.7	13.2	36.0	14.8	39.1
			-0011 Flow (GPM)	12.7	19.6	16.1	25.2	19.2	29.8	20.9	32.4	21.8	33.5	22.5	34.6	24.5	37.1
			MAX THROW (FT)*	21.1	46.8	25.3	57.0	30.7	63.0	37.4	70.0	37.4	71.0	38.0	72.0	38.0	77.0

* Figures shown are guidelines for vertical throw.
 ** Pressures based on relief valve settings at straight throw.