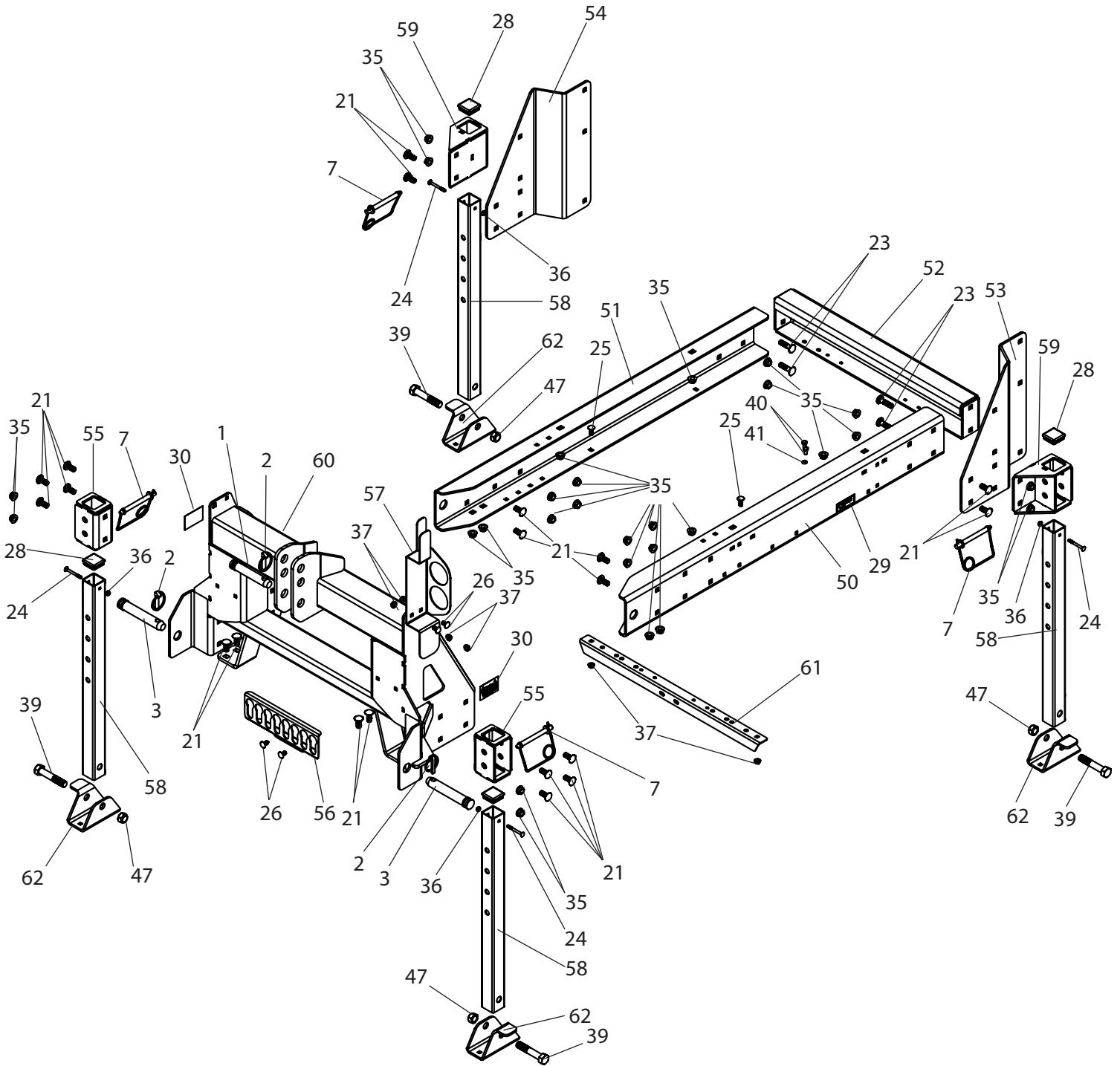


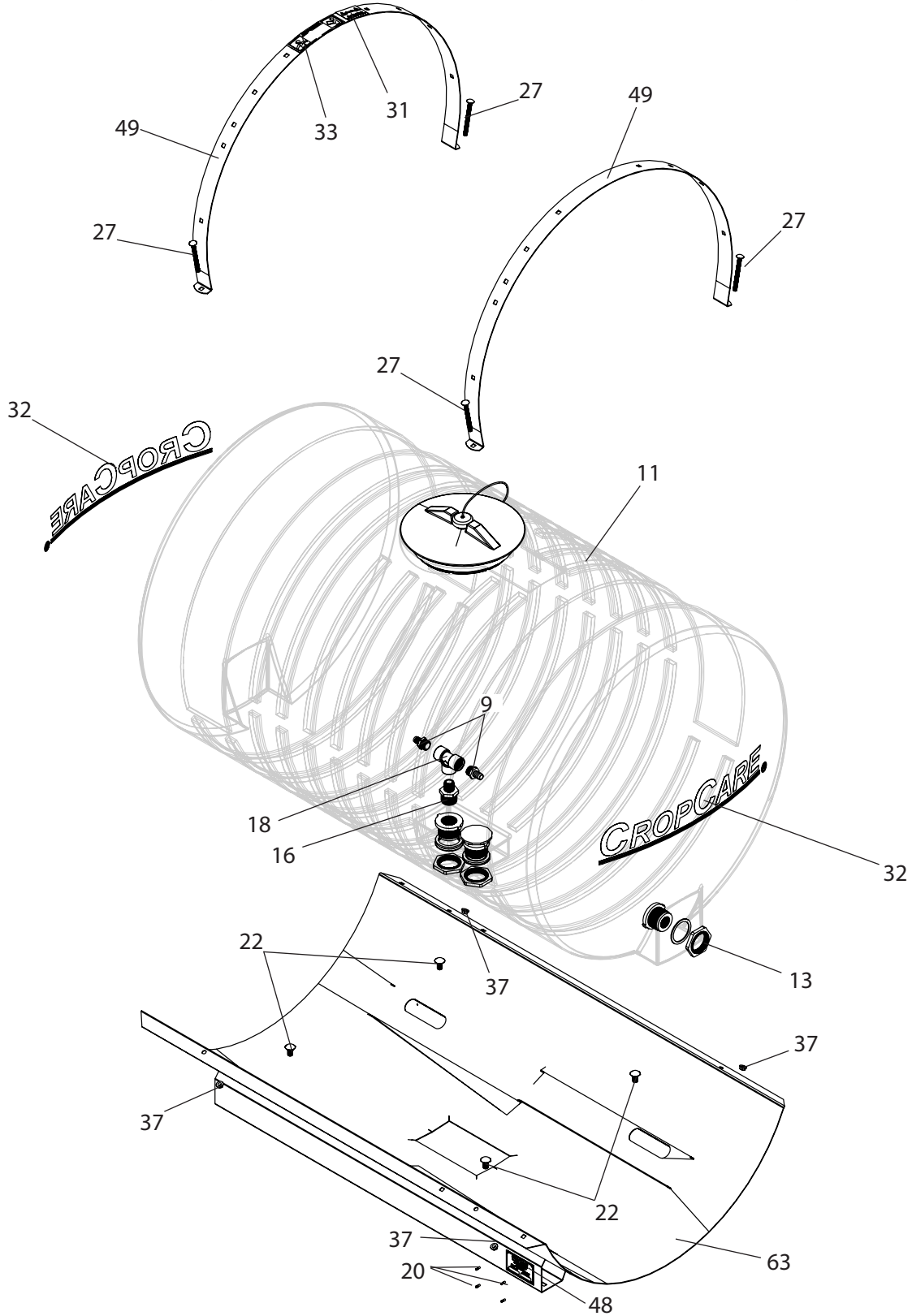
## 3PT115H, 3PT155H, 3PT205H, and 3PT305H Breakdown

110, 150, 200, 300 gallon 3PT base kit, configured, high pressure



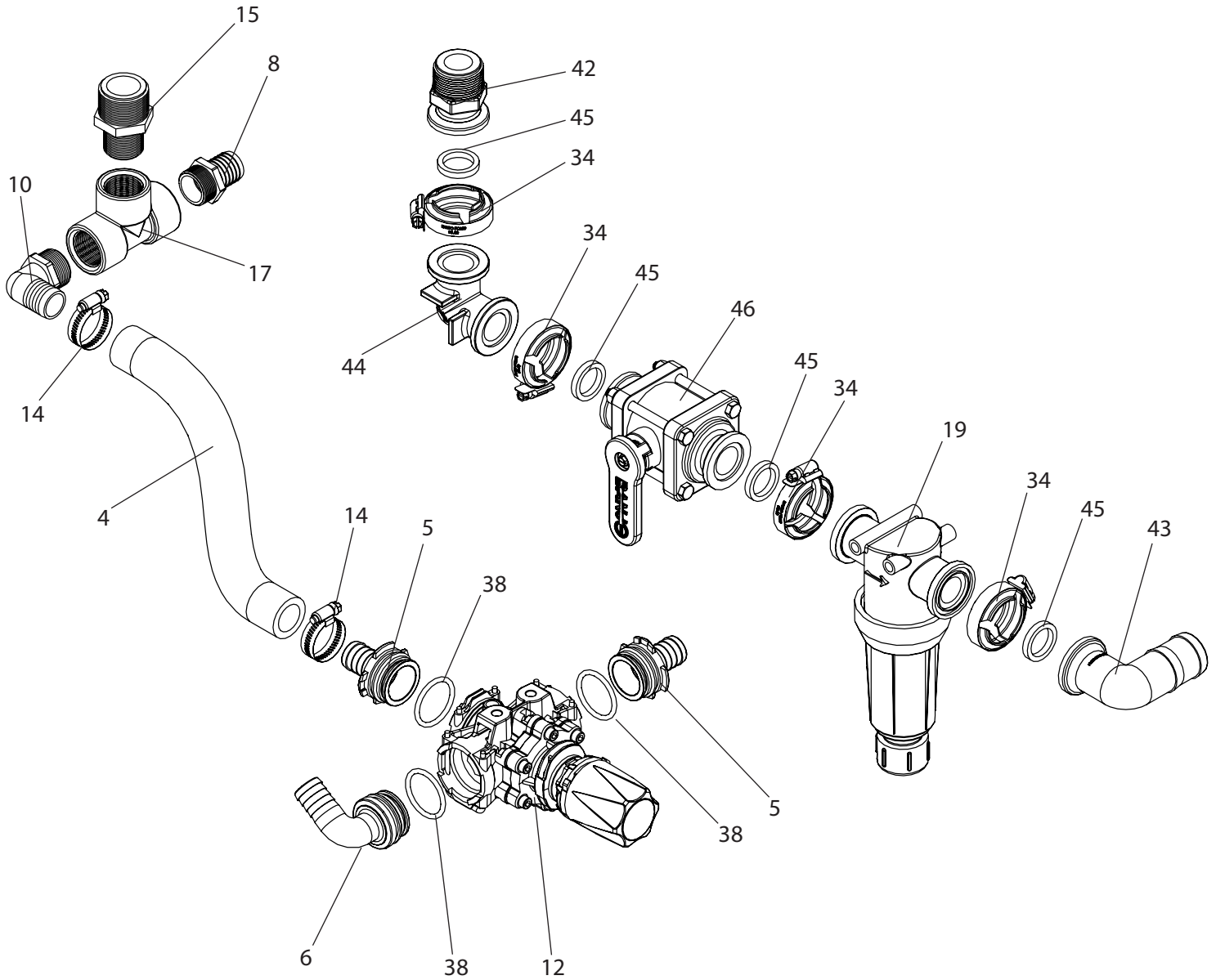
## 3PT115H, 3PT155H, 3PT205H, and 3PT305H Breakdown

110, 150, 200, 300 gallon 3PT base kit, configured, high pressure



## 3PT115H, 3PT155H, 3PT205H, and 3PT305H Breakdown

110, 150, 200, 300 gallon 3PT base kit, configured, high pressure



## 3PT115H, 3PT155H, 3PT205H, and 3PT305H Breakdown

### 110, 150, 200, 300 gallon 3PT base kit, configured, high pressure

Ref#	Qty.	Part Number	Description
1	1	03011	Pin, Top Link Cat 2 (4-5/16" Usable)
2	3	03027	Pin, Linch HD 7/16" Black
3	2	07237	Pin, Lift Arm Cat 2 Forged 7" w/5-3/8" Usable
4	1.5 FT	1016	Hose, EPDM Rubber 1" 300 PSI
5	2	1091525	Adapter, Hose T5 Male QC to 1" HB
6	1	1191525	Fitting, T5 Male QC to 90° 1" HB
7	4	15195	Pin, Snap-Lock 1/2" x 4 1/4"
8	1	3A100	Adapter, Hose 1" MPT x 1" HB
9	2	3A3458	Adapter, Hose 3/4" MPT x 5/8" HB
10	1	3EL100	Adapter, Hose Ell 1" MPT x 1" HB
11	1	47321 * +	Tank, 300 Gallon w/ 2-1/2" Sump Yellow
-	1	47323 ** +	Tank, 200 Gallon w/ 2" Sump Yellow
-	1	47254 *** +	Tank, 150 Gallon w/ 2" Sump Yellow
-	1	47194 *** +	Tank, 110 Gallon w/ 2" Sump Yellow
12	1	475552 +	Valve, Pressure Relief T5 QC 290 PSI
13	1	60427	Fitting, Bulkhead 1" FPT Dbl Tap (Requires 2-1/4" Hole)
14	2	6816052	Hose Clamp, 13/16" - 1-1/2" SS
15	1	8M1141	Nipple, Reducer 1-1/4" MPT x 1" MPT Sch 80 Poly
16	1	8M11434	Nipple, Reducer 1-1/4" MPT x 3/4" MPT Sch 80 Poly
17	1	8TT100	Tee, 1" FPT Sch 80 Poly
18	1	8TT34	Tee, Poly 3/4" FPT Sch 80
19	1	AA126ML-F50-50 +	Strainer, Line 1" Flange 50 Mesh Screen Flush Out
20	4	BTT44	Rivet, Pop 1/8" Dia. x .188" x .250" Grip SS
21	20	CB12*114G5	Bolt, Carriage 1/2-13 x 1-1/4" Gr 5
22	4	CB12*1G5	Bolt, Carriage 1/2-13 x 1" Gr 5
23	4	CB12*2G5	Bolt, Carriage 1/2-13 x 2" Gr 5
24	4	CB14*212G5	Bolt, Carriage 1/4-20 x 2-1/2" Gr 5
25	2	CB38*1G5	Bolt, Carriage 3/8-16 x 1" Gr 5
26	4	CB38*34G5	Bolt, Carriage 3/8-16 x 3/4" Gr 5
27	4	CB38*412G5 *	Bolt, Carriage 3/8-16 x 4-1/2" Gr 5
28	4	CC5515	Plug, Poly Square 2" x 10-14 Ga Black
29	1	DE105	Decal, Max Operating Pressure
30	2	DE136	Decal, Disconnecting Sprayer Warning
31	1	DE39	Decal, "Warning Read Owner's Manual" 2" x 3"
32	2	DE57	Decal, CropCare Logo 4 7/8" x 24"

\* Parts used on 300 gallon 3pt sprayers.

\*\* Parts used on 200 gallon 3pt sprayers.

\*\*\* Parts used on 150 gallon 3pt sprayers.

\*\*\*\* Parts used on 110 gallon 3pt sprayers.

^ Replaced with M100125BRB (Fitting, Flange 1-1/4" HB x 1" Flange) when used with rinse, education, and quick fill.

+ Has component parts breakdown available.

## 3PT115H, 3PT155H, 3PT205H, and 3PT305H Breakdown

### 110, 150, 200, 300 gallon 3PT base kit, configured, high pressure

Ref#	Qty.	Part Number	Description
33	1	DEMT3980	Decal, "Warning Avoid Injury Follow Labels"
34	4	FC100	Clamp, Flange 1" Std SS
35	28	FN12	Nut, Flange 1/2-13
36	4	FN14	Nut, Flange 1/4-20
37	10	FN38	Nut, Flange 3/8-16
38	3	G11063	O-Ring, EDPM T5 Quick Connect
39	4	H5C34*4	Bolt, Hex 3/4-10 x 4" Gr 5
40	2	H8*16M	Bolt, Hex 8mm x 16mm 1.25 Pitch 10.9 Zinc
41	2	LW516	Washer, Lock 5/16"
42	1	M100125MPT	Flange, 1-1/4" MPT x 1" Flange
43	1	M100150BRB90 ^	Flange, 1-1/2" 90 Degree Elbow x 1" Flange
44	1	M100CPG90	Coupling, 90° 1" Flange x 1" Flange
45	4	M100G	Gasket, Manifold EDPM 1"
46	1	MV100CF	Valve, Ball 1" Flange x 1" Flange
47	4	SNC34	Nut, Lock Steel 3/4-10
48	1	SP500	Plate, Serial Number
49	2	SS38	Tank strap, 300 gallon, gray
-	2	SS32 **	Tank strap, 200 gallon, gray
-	2	SS30 *** ****	Tank strap, 110 & 150 gallon, gray
50	1	T301	Frame Rail, 3PT200-305, Left
51	1	T302	Frame Rail, 3PT200-305, Right
52	1	T303	Frame Rail, 3PT200-305, Rear
53	1	T304	Boom Mount Plate, 3PT200-305, Left
54	1	T305	Boom Mount Plate, 3PT200-305, Right
55	2	T310	200-300 3PT, Adj Leg Brackets
56	1	T322	3PT200-305 Hydraulic hose holder, 8 ports
57	1	T330	200/300 3PT, Hose Loop Holder
58	4	T331	3pt leg, 200-300 gallon
59	2	T332	200-300 3PT, Rear Adj Leg Brackets
60	1	T335	200-300 3PT, 3PT Cat 2 Weldment
61	1	T465	Rear Hose Routing Mount
62	4	T597	3pt sprayer, foot plate
63	1	TS3860P	Tank saddle, 300 gallon, gray
-	1	TS3260P **	Tank saddle, 200 gallon, gray
-	1	TS3051P ***	Tank saddle, 150 gallon, gray
-	1	TS3034P ****	Tank saddle, 110 gallon, gray

\* Parts used on 300 gallon 3pt sprayers.

\*\* Parts used on 200 gallon 3pt sprayers.

\*\*\* Parts used on 150 gallon 3pt sprayers.

\*\*\*\* Parts used on 110 gallon 3pt sprayers.

^ Replaced with M100125BRB (Fitting, Flange 1-1/4" HB x 1" Flange) when used with rinse, education, and quick fill.

+ Has component parts breakdown available.