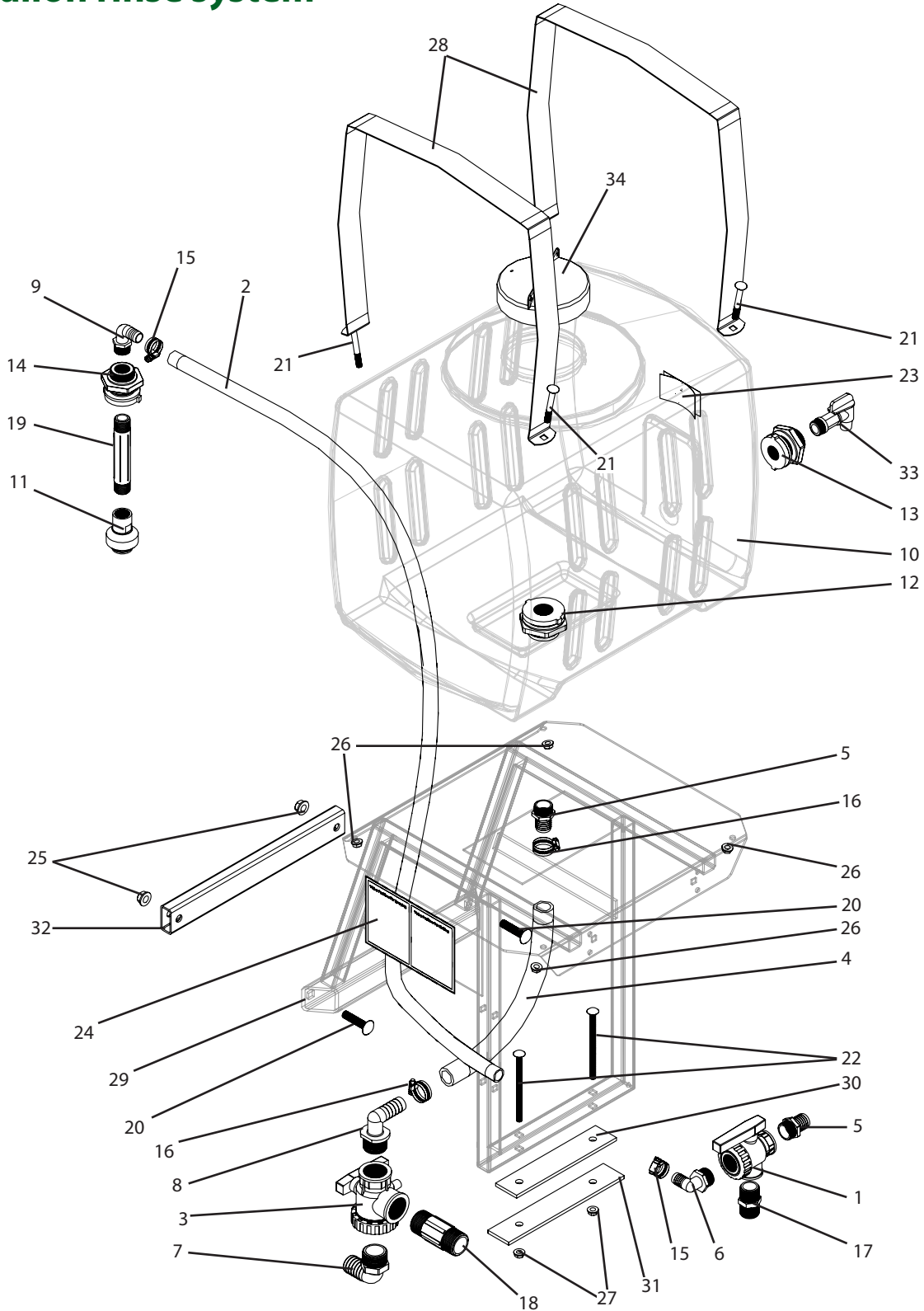


A111 Breakdown

30 gallon rinse system



A111 Breakdown

30 gallon rinse system

Ref#	Qty.	Part Number	Description
1	1	100SUBV3	Valve, Ball 3-Way Union 1" FPT
2	8 FT	1012	Hose, EPDM Rubber 3/4" 300 PSI
3	1	125SUBV3	Valve, Ball 3-Way Union 1-1/4" FPT
4	2 FT	3110	Hose, Suction EPDM Blend 1" 80 PSI
5	2	3A100	Adapter, Hose 1" MPT x 1" HB
6	1	3EL10034	Adapter, Hose Ell 1" MPT x 3/4" HB
7	1	3EL114	Elbow, Hose 90° 1-1/4" MPT x 1-1/4" Barb
8	1	3EL114100	Adapter, Hose 90° 1-1/4" MPT x 1" HB
9	1	3EL3434	Adapter, Hose 90° 3/4" MPT x 3/4" HB
10	1	47026	Tank, 30 Gal W/ Sump Yellow
11	1	55270-3/4-18-POM	Nozzle, Tank Rinse 3/4" FPT Black
12	1	60427	Fitting, Bulkhead 1" FPT Dbl Tap (Requires 2-1/4" Hole)
13	1	62798	Fitting, Tank 3/4" FPT Dbl Tap (Requires 1-5/8" Hole)
14	1	62798	Fitting, Tank 3/4" FPT Dbl Tap (Requires 1-5/8" Hole)
15	2	6812052	Hose Clamp, 1/2" - 1-1/4" SS
16	2	6816052	Hose Clamp, 11/16" - 1-1/2" SS
17	1	8M100	Nipple, 1" MPT x Short Sch 80 Poly
18	1	8M114*4	Nipple, 1-1/4" MPT x 4" Sch 80 Poly
19	1	8M34*6	Nipple, 3/4" MPT x 6" Sch 80 Poly
20	2	CB12*214G5	Bolt, Carriage 1/2-13 x 2-1/4" Gr 5
21	4	CB38*3G5	Bolt, Carriage 3/8-16 x 3" Gr 5
22	2	CB38*512G5	Bolt, Carriage 3/8-16 x 5-1/2" Gr 5
23	1	DE21	Decal, "Fresh Water Only"
24	1	DE43	Decal, Rinse Valve Position TR300
25	2	FN12	Nut, Flange 1/2-13
26	4	FN38	Nut, Flange 3/8-16
27	2	FN38	Nut, Flange 3/8-16
28	2	SS54	Tank strap, 30 gallon rinse tank, gray
29	1	T516	Rinse tank mount, 30 gallon, TR300
30	1	T516A	Clip, Tank Mount "Short"
31	1	T516B	Clip, Tank Mount "Long"
32	1	T516C	Spacer, Tank Mount 1" x 2"
33	1	VDB34	Valve, Drum & Barrel 3/4" MPT PVC White
34	1	63484	Lid, 5" Tank (30, 55, 85 gal)

*Component parts breakdowns are available for the indicated components.