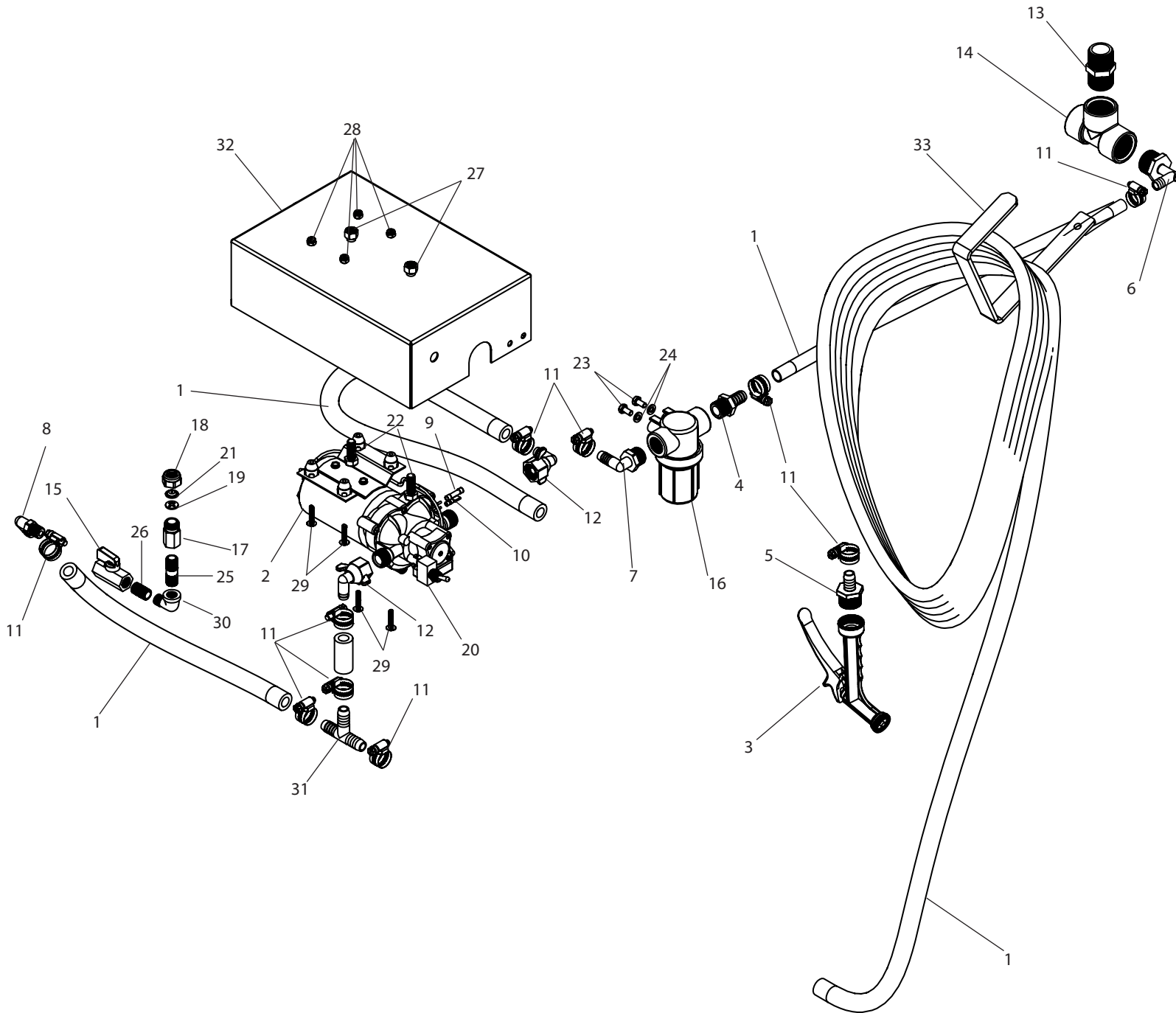


A113 Breakdown

Power Wash Subassembly



A113 Breakdown

Ref#	Qty.	Part Number	Description
1	40	1008	Hose, EPDM Rubber 1/2" 300 PSI
2	1	2088-343-135 *	Pump, ShurFlo 12V 3 GPM Vi-Santo
3	1	21010010	Nozzle, Garden Hose Pistol Grip Plastic
4	1	3A1212	Adapter, Hose 1/2" MPT x 1/2" HB
5	1	3D3412	Fitting, Garden Hose 3/4" MGHT x 1/2" HB Poly
6	1	3EL10012	Adapter, Hose Ell 1" MPT x 1/2" HB
7	1	3EL1212	Adapter, Hose 90° 1/2" MPT x 1/2" HB
8	1	3EL1412	Elbow, Hose 90° 1/4" MPT x 1/2" HB
9	1	506346	Connector, Wire Butt Terminal 16-14 Ga Insulated
10	1	506567	Terminal, Wire Spade 1/4" Female 16-14 Ga Insulated
11	10	6806052	Hose Clamp, 1/2" - 29/32" SS
12	2	803401	Adapter, Hose 90° 1/2" FPT x 1/2" HB
13	1	8M100	Nipple, 1" MPT x Short Sch 80 Poly
14	1	8TT100	Tee, 1" FPT Sch 80 Poly
15	1	90FFB14	Valve, Ball 1/4" FPT, 300psi
16	1	AA122ML12PP50 *	Strainer, Line 1/2" FPT 50 MS w/Mounting Holes
17	1	CP1321	Body, Nozzle Type-T 1/4" FPT Inlet Brass
18	1	CP1325	Cap, TeeJet Nozzle Brass
19	1	DC56NY	Core, TeeJet Nylon Black
20	1	DC7200102	Switch, Toggle SPST On-Off Dust-Proof 1/4" Spade Terminal
21	1	DVP6	Orifice Disc, Polymer Red
22	2	H5C38*1	Bolt, Hex 3/8-16 x 1" Gr 5
23	2	H6*12M	Bolt, Hex 6mm x 12mm 1.0 Pitch
24	2	LW14	Washer, Lock 1/4"
25	1	N14*112BR	Nipple, Pipe 1/4" MPT x 1-1/2" Brass
26	1	N14*CLBR	Nipple, Pipe 1/4" MPT x Short Brass
27	2	NC38	Nut, Hex 3/8-16
28	4	NNC1024S	Nut, Lock Nylon 10-24 SS
29	4	SBT316*1	Bolt, Stove Truss Head 10-24 x 1"
30	1	SE14BR	Elbow, Street 1/4" NPT Brass
31	1	T12	Tee, 1/2" Hose Barbs Nylon
32	1	T512	Pump cover, rinse system
33	1	T513	Hose hanger, rinse system

* Additional parts breakdowns available.