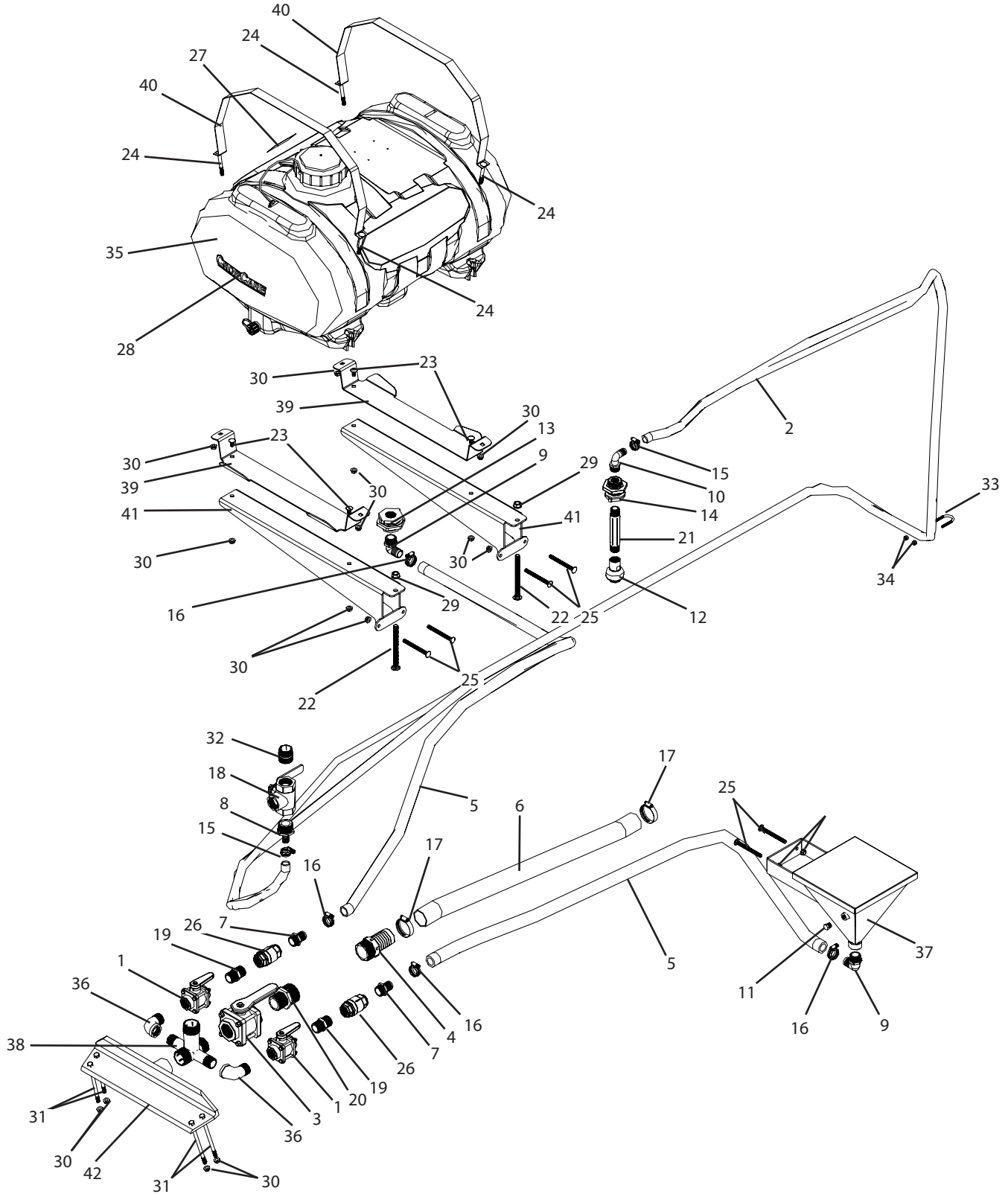


A212 Breakdown

40 gallon rinse and chemical induction system, high pressure



A212 Breakdown

40 gallon rinse and chemical induction system, high pressure

Ref#	Qty.	Part Number	Description
1	2	100STD	Valve, Ball Valve Bolted 1" Std Port
2	14 FT	1012	Hose, EPDM Rubber 3/4" 300 PSI
3	1	150FP	Valve, Ball bolted 1 1/2" full port
4	1	200KN	Nipple, King 2" MPT x 2" HB
5	11 FT	3110	Hose, Suction EPDM Blend 1" 80 PSI
6	1.5 FT	3520	Hose, EPDM Enforcer 2" 100 PSI
7	2	3A100	Adapter, Hose 1" MPT x 1" HB
8	1	3A11434	Adapter, Hose 1-1/4" MPT x 3/4" Barb
9	2	3EL100	Adapter, Hose Ell 1" MPT x 1" HB
10	1	3EL3434	Adapter, Hose 90° 3/4" MPT x 3/4" HB
11	1	3F14	Plug, 1/4" MPT Poly
12	1	55270-3/4-18-POM	Nozzle, Tank Rinse 3/4" FPT Black
13	1	60427	Fitting, Bulkhead 1" FPT Dbl Tap (Requires 2-1/4" Hole)
14	1	62798	Fitting, Tank 3/4" FPT Dbl Tap (Requires 1-5/8" Hole)
15	2	6812052	Hose Clamp, 1/2" - 1-1/4" SS
16	4	6816052	Hose Clamp, 11/16" - 1-1/2" SS
17	2	6832	Hose Clamp, 1-1/2" - 2-1/2" SS
18	1	7060601	Valve, 3-Way Ball Brass 1-1/4" FPT
19	2	8M100	Nipple, 1" MPT x Short Sch 80 Poly
20	1	8M200112	Nipple, Reducer 2" MPT x 1-1/2" MPT Sch 80 Poly
21	1	8M34*6	Nipple, 3/4" MPT x 6" Sch 80 Poly
22	2	CB12*6G5	Bolt, Carriage 1/2-13 x 6" Gr 5
23	4	CB38*34G5	Bolt, Carriage 3/8-16 x 3/4" Gr 5
24	4	CB38*3G5	Bolt, Carriage 3/8-16 x 3" Gr 5
25	6	CB38*4G5	Bolt, Carriage 3/8-16 x 4" Gr 5
26	2	CV15	Valve, Check 1" FPT Stainless/viton
27	1	DE21	Decal, "Fresh Water Only
28	1	DE46	Decal, CropCare Logo 1.9" x 8.8"
29	2	FN12	Nut, Flange 1/2-13
30	18	FN38	Nut, Flange 3/8-16
31	4	H5C38*612	Bolt, Hex 3/8-16 x 6-1/2" Gr 5
32	1	N114*CLS	Nipple, Pipe 1-1/4" MPT x short SS
33	1	N222083	Bolt, U-Bolt Round 1/4-20 x 1-1/8" x 2-1/4" Zinc
34	2	NNC14	Nut, Lock Nylon 1/4-20
35	1	SB00040SY *	Tank, 40 Gal Blow Molded w/Lid Lanyard Outlet Cap Gasket and Tether
36	2	SE15	Elbow, Street 1" NPT SS
37	1	T239	Chemical induction tank, 1" FPT, stainless
38	1	T520	Manifold, 1 1/2" MPT, stainless, 5 ports
39	2	T722	Bracket, Mounting 40 & 60 Gallon Tanks
40	2	T723	Tank strap for 40gal DenHartog tank
41	2	T818	Rinse tank mounting arm
42	1	T830	Suction manifold mounting bracket

*Component parts breakdowns are available for the indicated components.