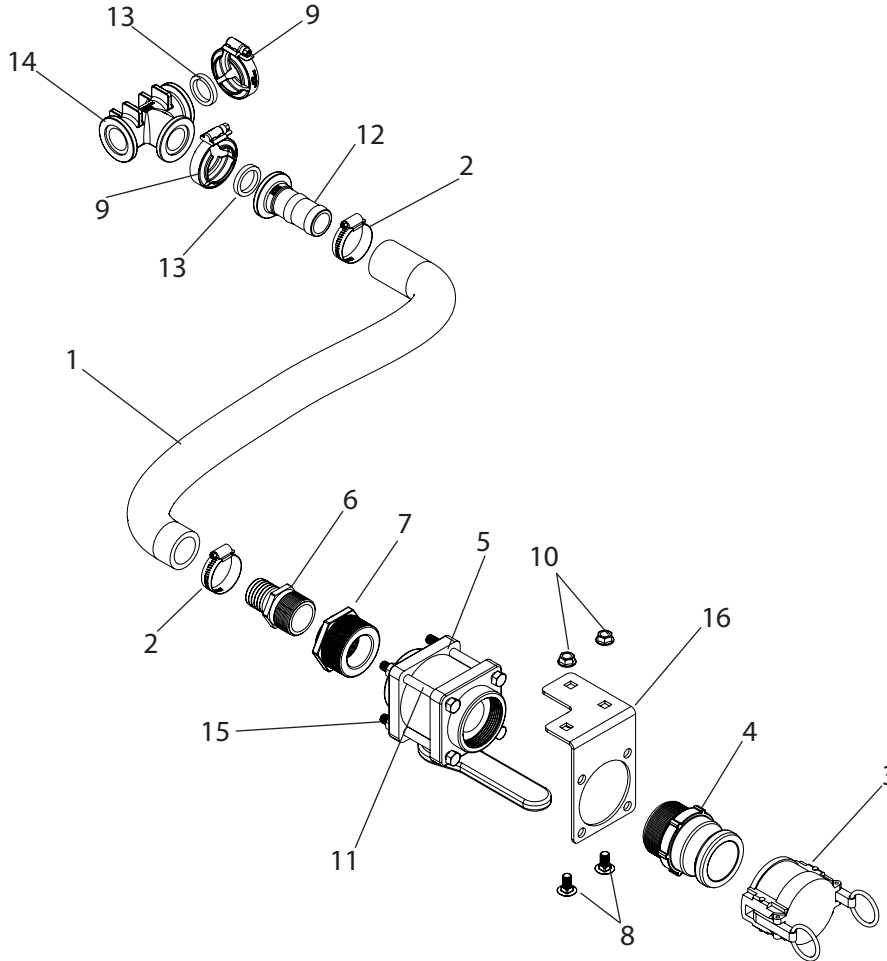


## A255 Breakdown

### Quick Fill Kit for Small Trailer



Ref#	Qty.	Part Number	Description
1	3ft	3111	Hose, Suction EPDM Blend 1-1/4" 70 PSI
2	2	6820052	Hose Clamp, 13/16" - 1-3/4" SS
3	1	200DCS	Dust Cap, 2" Male Coupler
4	1	200F	Coupler, 2" Male w/2" MPT
5	1	200STD	Valve, Ball Bolted 2" standard port
6	1	3A114	Fitting, Hose 1-1/4" MPT x 1-1/4" HB
7	1	8RB200114	Bushing, Reducer 2" MPT x 1-1/4" FPT Sch 80 Poly
8	2	CB38*34G5	Bolt, Carriage 3/8-16 x 3/4" Gr 5
9	2	FC100	Clamp, Flange 1" Std SS
10	2	FN38	Nut, Flange 3/8-16
11	4	H38*4S	Bolt, Hex 3/8-16 x 4" SS
12	1	M100125BRB	Fitting, Flange 1-1/4" HB x 1" Flange
13	2	M100G	Gasket, Manifold EDPM 1"
14	1	M100TEE	Tee, Flange 1" Tee
15	4	NC38	Nut, Hex 3/8-16
16	1	VMT	Mounting plate, for quick fill ball valve