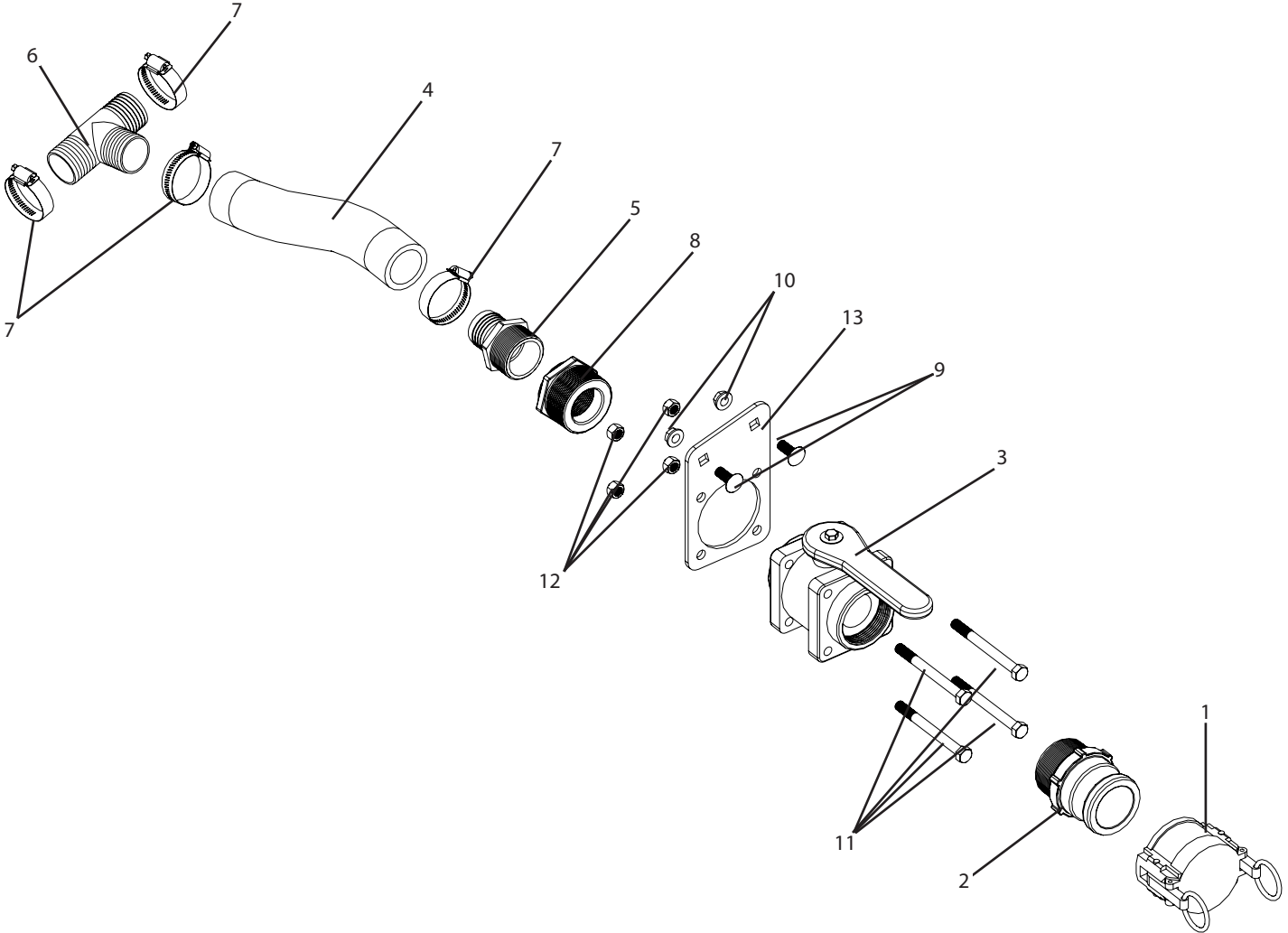


A323 Breakdown

Quick Fill (To Sprayer Tank)



Ref#	Qty.	Part Number	Description
1	1	200DCS	Dust Cap, 2" Male Coupler
2	1	200F	Coupler, 2" Male w/2" MPT
3	1	200STD	Valve, Ball Bolted 2" standard port
4	0.84 FT	3112	Hose, Suction EPDM Blend 1-1/2" 60 PSI
5	1	3A112	Adapter, Hose 1-1/2" MPT x 1-1/2" HB
6	1	3T112	Tee, Hose barb 1-1/2" poly
7	4	6824052	Hose Clamp, 1" - 2" SS
8	1	8RB200112	Bushing, Reducer 2" MPT x 1-1/2" FPT Sch 80 Poly
9	2	CB38*1G5	Bolt, Carriage 3/8-16 x 1" Gr 5
10	2	FN38	Nut, Flange 3/8-16
11	4	H38*4S	Bolt, Hex 3/8-16 x 4" SS
12	4	NC38S	Nut, Hex 3/8-16 SS
13	1	T1226	500 Gallon Trailer, Quick Fill Mount

*Component parts breakdowns are available for the indicated components.