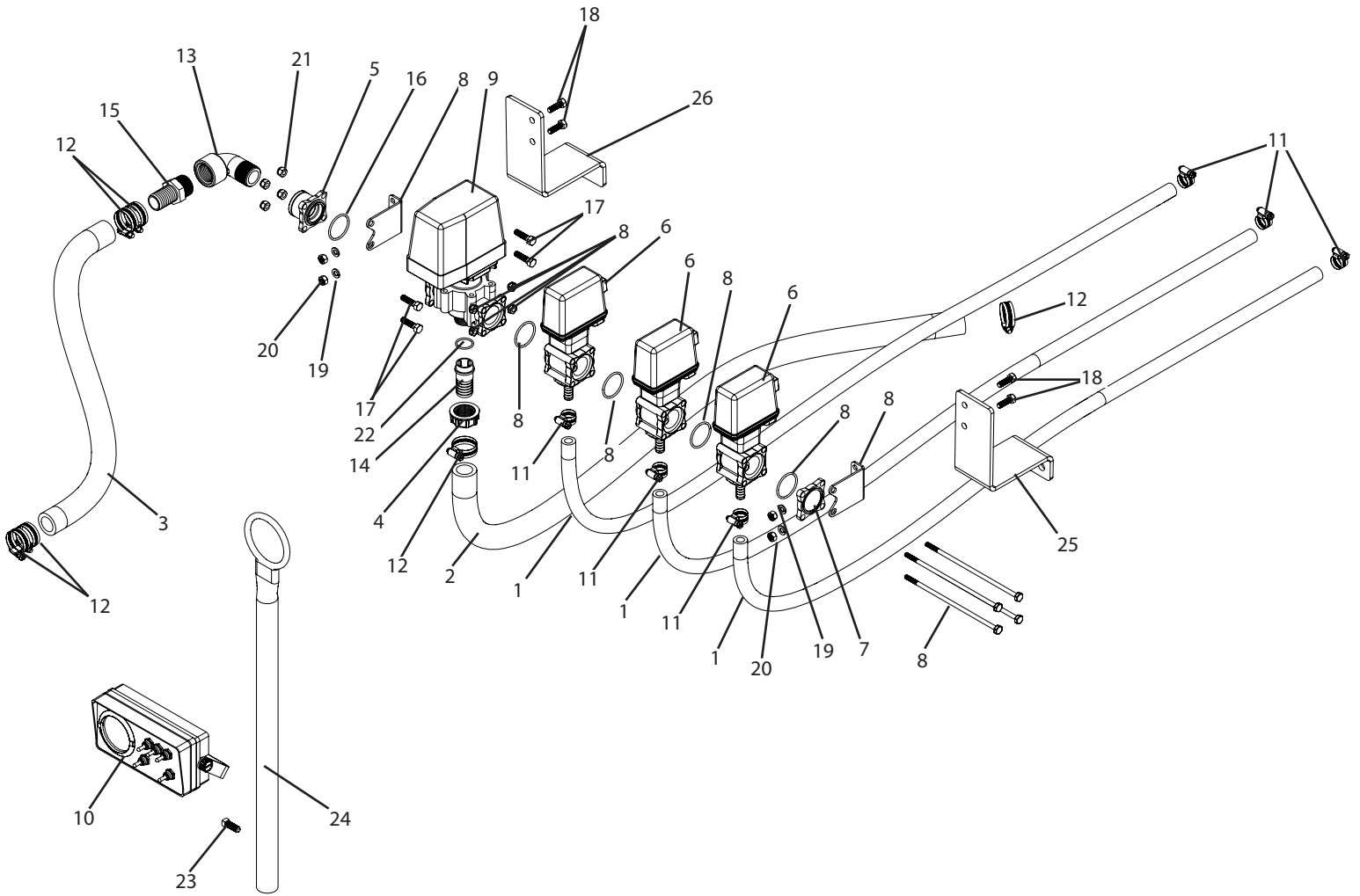


C300-463-HYPRO Breakdown

Arag high pressure electric



C300-463-HYPRO Breakdown

Arag high pressure electric

Ref#	Qty.	Part Number	Description
1	39 FT	1008	Hose, EPDM Rubber 1/2" 300 PSI
2	5 FT	1016	Hose, EPDM Rubber 1" 300 PSI
3	2 FT	1116	Hose, Nitrile Grizzly 1" 500 PSI
4	1	2002040	Nut, Fly 1" BSP
5	1	463000-043	Inlet, Manifold 1" FPT #463
6	3	463001ST *	Valve, 1/2" HB outlet, 290 psi (old)
7	1	463011-120	Cap, Outlet Manifold #463
8	1	463900-930	Kit, Bolt 3 Section SS
9	1	465622 *	Valve, Electric Regulating 290 PSI #465, 1" BMT Bypass Outlet
10	1	4665-3-OP300-3	Box, Control 3 Section 300 PSI w/Cables & Gauge Tubing & Tubing Connectors
11	6	6806052	Hose Clamp, 1/2" - 29/32" SS
12	6	6816052	Hose Clamp, 11/16" - 1-1/2" SS
13	1	8SE100	Elbow, Street 90° 1" NPT Sch 80 Poly
14	1	9910550210	Adapter, 1" Straight HB
15	1	A100SS	Adapter, Hose 1" MPT x 1" HB SS
16	1	G10071V	O-Ring, Manifold Viton #463
17	4	H516*114S	Bolt, Hex 5/16-18 x 1-1/4" SS
18	4	H5C516*1	Bolt, Hex 5/16-18 x 1" Gr 5
19	4	LW516	Washer, Lock 5/16"
20	4	NC516	Nut, Hex 5/16-18
21	4	NNC516S	Nut, Lock Nylon 5/16-18 SS
22	1	OR119	O-Ring, Buna N 15/16" ID x 1 1/8" OD, 3/32" (9910-550350)
23	1	SHS38*1Z	Screw, Square Hd Set 3/8-16 x 1" Zinc
24	1	T517	Hose holder, TR300
25	1	T549L	144ATM mounting bracket, left
26	1	T549R	144ATM mounting bracket, right

*Component parts breakdowns are available for the indicated components.