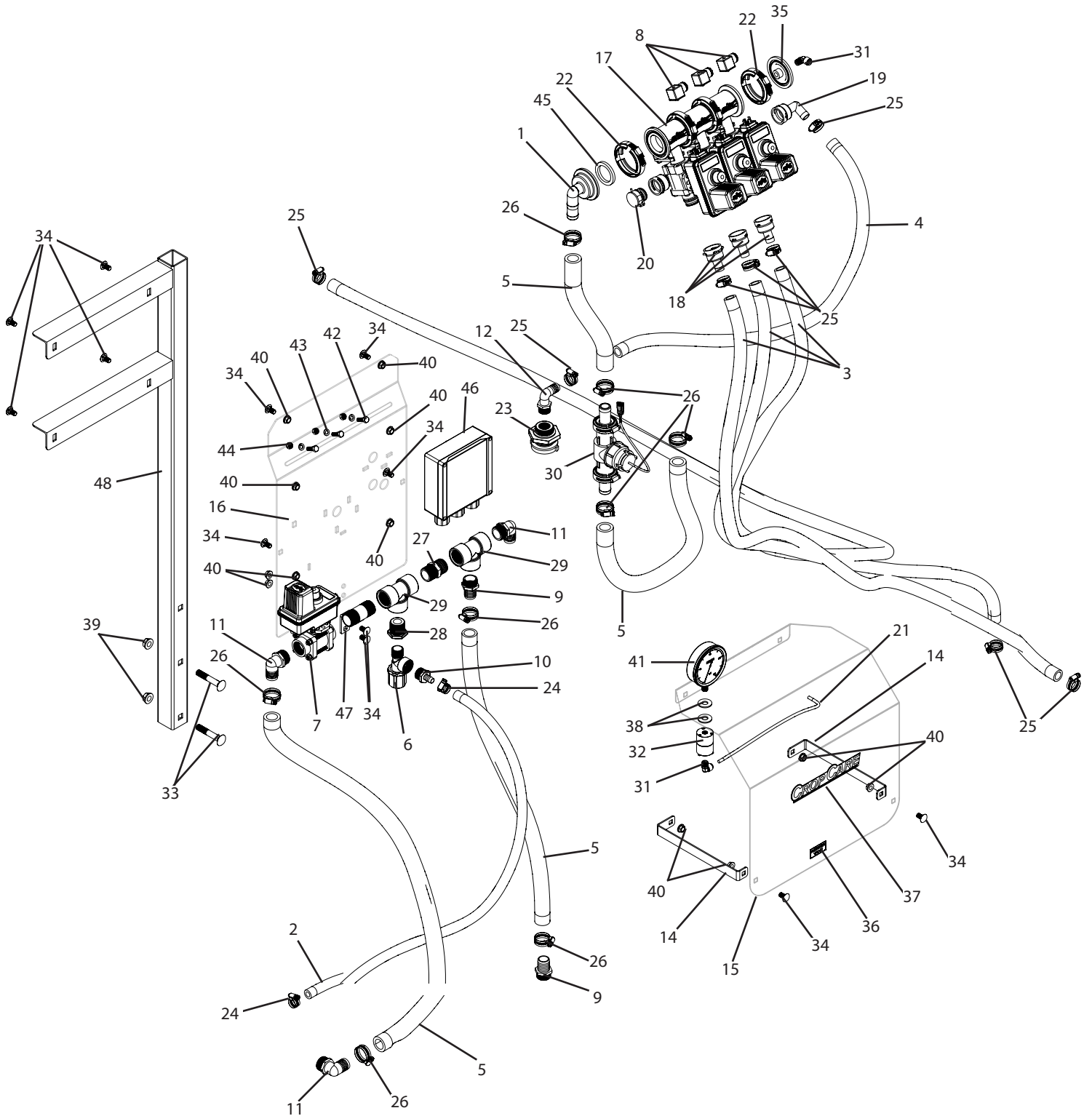


## C3PT-453 Breakdown

450 series manifold with flowback, 3 sections, for 3 point sprayers



## C3PT-453 Breakdown

### 450 series manifold with flowback, 3 sections, for 3 point sprayers

| Ref# | Qty.  | Part Number     | Description                                                                |
|------|-------|-----------------|----------------------------------------------------------------------------|
| 1    | 1     | 57586           | Elbow, 1" 90° HB x 2" Flange                                               |
| 2    | 5 FT  | 1008            | Hose, EPDM Rubber 1/2" 300 PSI                                             |
| 3    | 45 FT | 1012            | Hose, EPDM Rubber 3/4" 300 PSI                                             |
| 4    | 5 FT  | 1012            | Hose, EPDM Rubber 3/4" 300 PSI                                             |
| 5    | 12 FT | 1016            | Hose, EPDM Rubber 1" 300 PSI                                               |
| 6    | 1     | 2352034PP       | Valve, Throttling 3/4" NPT Poly 150 PSI                                    |
| 7    | 1     | 35-02099 *      | Valve, Regulating Ball 1" FPT 6 Second Operation (344BRL-24-03CCS)         |
| 8    | 3     | 38082-15        | Cable, 4 Pin Din Connector w/1.3m 3-Wire                                   |
| 9    | 2     | 3A100           | Adapter, Hose 1" MPT x 1" HB                                               |
| 10   | 1     | 3A3412          | Fitting, Hose 3/4" MPT x 1/2" HB                                           |
| 11   | 2     | 3EL100          | Adapter, Hose Ell 1" MPT x 1" HB                                           |
| 12   | 1     | 3EL3434         | Adapter, Hose 90° 3/4" MPT x 3/4" HB                                       |
| 13   | 1     | 45-20250        | Harness, Wiring 7-Section For 844E & Radion 8140 Consoles                  |
| 14   | 2     | 450B            | Brace, valve cover                                                         |
| 15   | 1     | 450C            | Valve cover                                                                |
| 16   | 1     | 450MOUNT        | Ball valve mounting plate                                                  |
| 17   | 1     | 453BEC-3FBQ-D * | Manifold, 3-Valve Flowback #75 flange inlets, 45529 QC for boom & flowback |
| 18   | 3     | 45529-3/4       | Fitting, QC 3/4" Straight HB w/Clip & O-Ring                               |
| 19   | 1     | 45529-90-3/4    | Fitting, QC 3/4" 90° HB w/Clip & O-Ring                                    |
| 20   | 1     | 45529-P         | Fitting, QC Plug w/Clip & O-Ring                                           |
| 21   | 3 FT  | 5156N           | Tubing, Nylon 1/4" OD Black                                                |
| 22   | 2     | 55245-75        | Clamp, #75 Series & O-Ring Kit SS                                          |
| 23   | 1     | 62798           | Fitting, Tank 3/4" FPT Dbl Tap (Requires 1-5/8" Hole)                      |
| 24   | 2     | 6806052         | Hose Clamp, 1/2" - 29/32" SS                                               |
| 25   | 8     | 6812052         | Hose Clamp, 1/2" - 1-1/4" SS                                               |
| 26   | 6     | 6816052         | Hose Clamp, 11/16" - 1-1/2" SS                                             |
| 27   | 1     | 8M100           | Nipple, 1" MPT x Short Sch 80 Poly                                         |
| 28   | 1     | 8RB134          | Bushing, Reducer 1" MPT x 3/4" FPT Sch 80 Poly                             |
| 29   | 2     | 8TT100          | Tee, 1" FPT Sch 80 Poly                                                    |
| 30   | 1     | 90-50230 *      | Kit, Flow Meter 801 w/1" Hose Barbs                                        |
| 31   | 2     | A4ME4           | Adapter, TrueSeal Fitting 90° 1/4" Tube                                    |
| 32   | 1     | BAAF            | Isolator, Pressure Gauge 1/4" FPT                                          |
| 33   | 2     | CB12*3G5        | Bolt, Carriage 1/2-13 x 3" Gr 5                                            |
| 34   | 12    | CB38*34G5       | Bolt, Carriage 3/8-16 x 3/4" Gr 5                                          |
| 35   | 1     | CP46127-1/4-PP  | Fitting, Flange 1/4" FPT Gauge Port #75                                    |
| 36   | 1     | DE33            | Decal, Agitator Valve                                                      |
| 37   | 1     | DE46            | Decal, CropCare Logo 1.9" x 8.8"                                           |
| 38   | 2     | FW12S           | Washer, Flat, 1/2" SS                                                      |
| 39   | 2     | FN12            | Nut, Flange 1/2-13                                                         |
| 40   | 12    | FN38            | Nut, Flange 3/8-16                                                         |

\*Component parts breakdowns are available for the indicated components.

## C3PT-453 Breakdown

### 450 series manifold with flowback, 3 sections, for 3 point sprayers

| Ref# | Qty. | Part Number | Description                                           |
|------|------|-------------|-------------------------------------------------------|
| 41   | 1    | GG1604      | Gauge, 4" Liquid Filled 160 PSI                       |
| 42   | 3    | H5C516*1    | Bolt, Hex 5/16-18 x 1" Gr 5                           |
| 43   | 3    | LW516       | Washer, Lock 5/16"                                    |
| 44   | 3    | NC516       | Nut, Hex 5/16-18                                      |
| 45   | 1    | S150E       | Gasket, Camlock 1 1/2" Nitrile/Buna                   |
| 46   | 1    | T403        | Control junction box, for 3 points and large trailers |
| 47   | 1    | T529        | Mounting nipple, 1" MPT x 3", stainless               |
| 48   | 1    | T538        | Electric valve mount post, for large 3PT              |

\*Component parts breakdowns are available for the indicated components.