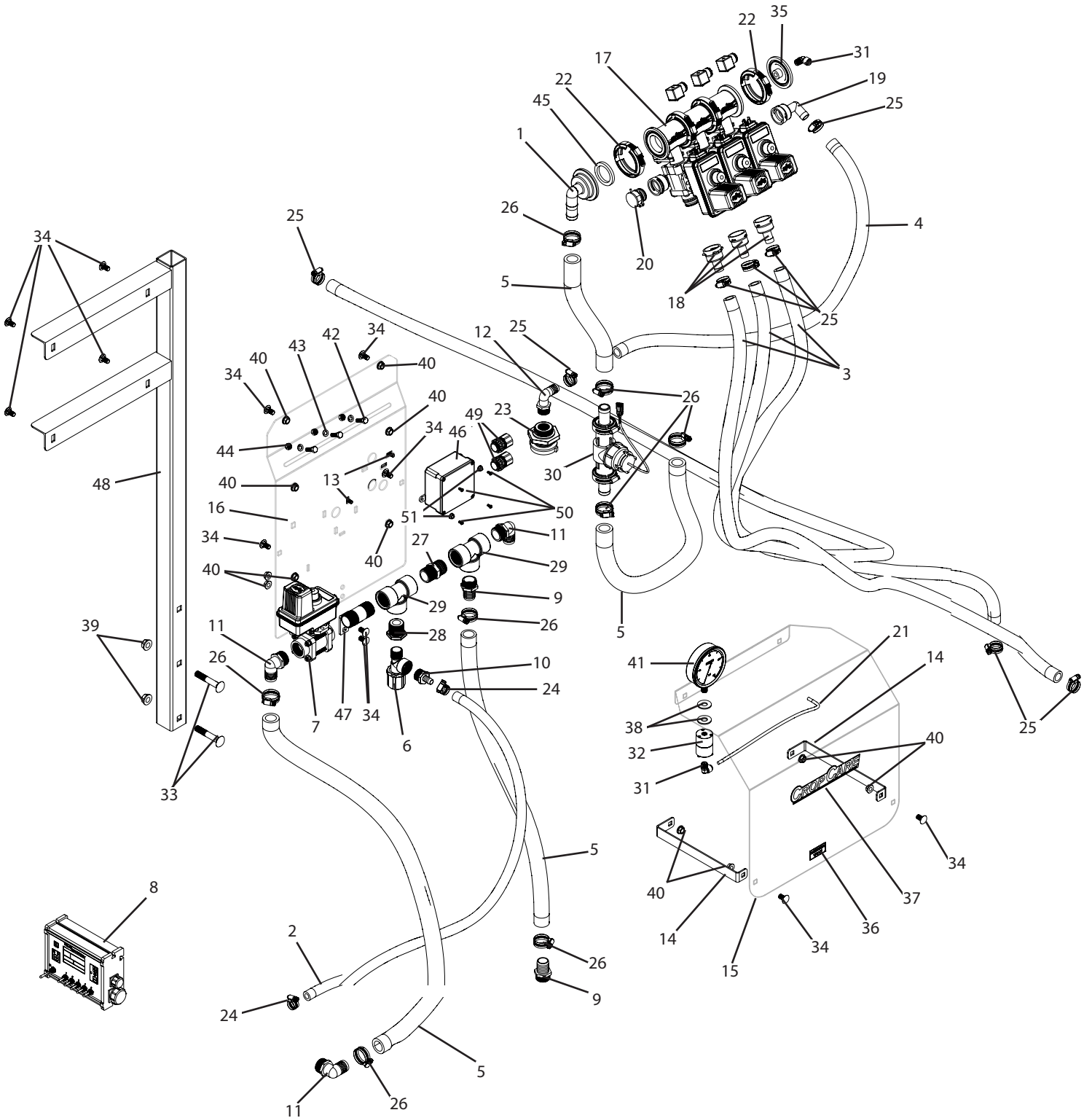


C3PT-453FB-844 Breakdown

844E automatic rate control, 453 flowback, for 3 point sprayers



C3PT-453FB-844 Breakdown

844E automatic rate control, 453 flowback, for 3 point sprayers

Ref#	Qty.	Part Number	Description
1	1	57586	Elbow, 1" 90° HB x 2" Flange
2	5 FT	1008	Hose, EPDM Rubber 1/2" 300 PSI
3	45 FT	1012	Hose, EPDM Rubber 3/4" 300 PSI
4	5 FT	1012	Hose, EPDM Rubber 3/4" 300 PSI
5	12 FT	1016	Hose, EPDM Rubber 1" 300 PSI
6	1	2352034PP	Valve, Throttling 3/4" NPT Poly 150 PSI
7	1	35-02099 *	Valve, Regulating Ball 1" FPT 6 Second Operation (344BRL-24-03CCS)
8	1	90-50017	Kit, 844E-5 Console w/26' Harness (45-20065) Power Cable Mounting Bracket
9	2	3A100	Adapter, Hose 1" MPT x 1" HB
10	1	3A3412	Fitting, Hose 3/4" MPT x 1/2" HB
11	2	3EL100	Adapter, Hose Ell 1" MPT x 1" HB
12	1	3EL3434	Adapter, Hose 90° 3/4" MPT x 3/4" HB
13	2	CB14*34	Bolt, Carriage 1/4-20 x 3/4" Gr 2
14	2	450B	Brace, valve cover
15	1	450C	Valve cover
16	1	450MOUNT	Ball valve mounting plate
17	1	453BEC-3FBQ-C15 *	Manifold, 3-Valve Flowback #75 flange inlets 45529 QC for boom & flowback
18	3	45529-3/4	Fitting, QC 3/4" Straight HB w/Clip & O-Ring
19	1	45529-90-3/4	Fitting, QC 3/4" 90° HB w/Clip & O-Ring
20	1	45529-P	Fitting, QC Plug w/Clip & O-Ring
21	3 FT	5156N	Tubing, Nylon 1/4" OD Black
22	2	55245-75	Clamp, #75 Series & O-Ring Kit SS
23	1	62798	Fitting, Tank 3/4" FPT Dbl Tap (Requires 1-5/8" Hole)
24	2	6806052	Hose Clamp, 1/2" - 29/32" SS
25	8	6812052	Hose Clamp, 1/2" - 1-1/4" SS
26	6	6816052	Hose Clamp, 11/16" - 1-1/2" SS
27	1	8M100	Nipple, 1" MPT x Short Sch 80 Poly
28	1	8RB134	Bushing, Reducer 1" MPT x 3/4" FPT Sch 80 Poly
29	2	8TT100	Tee, 1" FPT Sch 80 Poly
30	1	90-50230 *	Kit, Flow Meter 801 w/1" Hose Barbs
31	2	A4ME4	Adapter, TrueSeal Fitting 90° 1/4" Tube
32	1	BAAF	Isolator, Pressure Gauge 1/4" FPT
33	2	CB12*3G5	Bolt, Carriage 1/2-13 x 3" Gr 5
34	12	CB38*34G5	Bolt, Carriage 3/8-16 x 3/4" Gr 5
35	1	CP46127-1/4-PP	Fitting, Flange 1/4" FPT Gauge Port #75
36	1	DE33	Decal, Agitator Valve
37	1	DE46	Decal, CropCare Logo 1.9" x 8.8"
38	2	FW12S	Washer, Flat, 1/2" SS
39	2	FN12	Nut, Flange 1/2-13
40	12	FN38	Nut, Flange 3/8-16

*Component parts breakdowns are available for the indicated components.

C3PT-453FB-844 Breakdown

844E automatic rate control, 453 flowback, for 3 point sprayers

Ref#	Qty.	Part Number	Description
41	1	GG1604	Gauge, 4" Liquid Filled 160 PSI
42	3	H5C516*1	Bolt, Hex 5/16-18 x 1" Gr 5
43	3	LW516	Washer, Lock 5/16"
44	3	NC516	Nut, Hex 5/16-18
45	1	S150E	Gasket, Camlock 1 1/2" Nitrile/Buna
46	1	E442	Box, Electrical Junction PVC w/ cover 4" x 4" x 2"
47	1	T529	Mounting nipple, 1" MPT x 3", stainless
48	1	T538	Electric valve mount post, for large 3PT
49	2	LPCG757	Strain Relief, Cord 3/8" - 3/4" Non-Metallic Grip
50	4	MR832*12S	Screw, Machine 8-32 x 1/2" SS
51	2	FN14	Nut, Flange 1/4-20

*Component parts breakdowns are available for the indicated components.