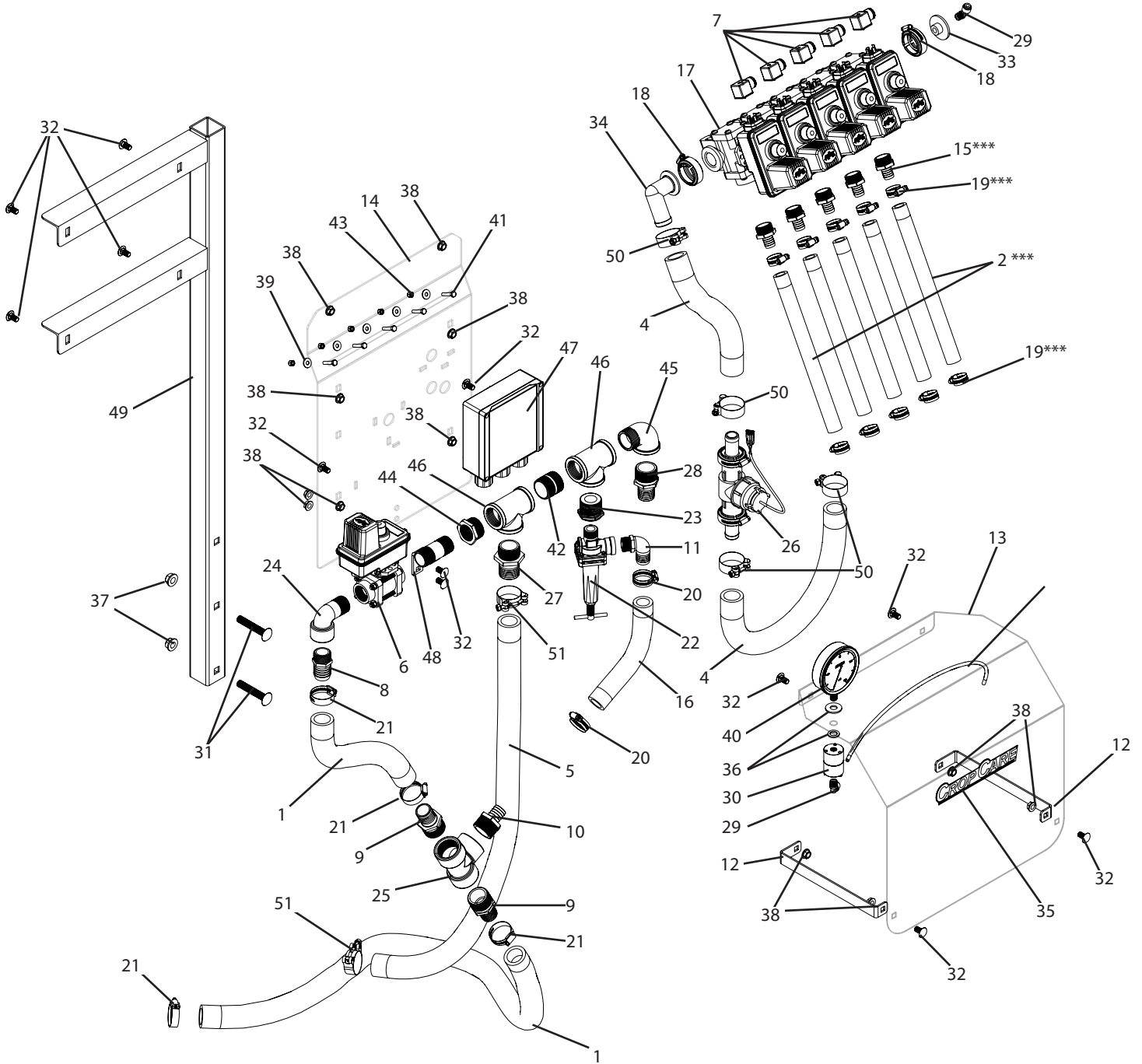


C3PT-463, C3PT-465 Breakdown

460 series manifold, 3-5 sections, for 3 points



*** On 60ft booms with three section controls the following components are used on sections 1 and 3 only:

- Boom plumbing is supplied with 1" hose (Item 3).
- Item 15 is replaced with Item 16.
- Item 19 is replaced with Item 20.

C3PT-463, C3PT-465 Breakdown

460 series manifold, 3-5 sections, for 3 points

Ref#	463 Qty.	465 Qty.	Part Number	Description
1	6.5 FT	6.5 FT	10104	Hose, EPDM Rubber 1-1/4" 150 PSI
2	15 FT	40 FT	1012	Hose, EPDM Rubber 3/4" 300 PSI
3	60 FT	1.5 FT	1016	Hose, EPDM Rubber 1" 300 PSI
4	3.5 FT	3.5 FT	1120	Hose, Nitrile Grizzly 1-1/4" 500 PSI
5	4.5 FT	4.5 FT	1124	Hose, Nitrile Grizzly 1-1/2" 500 PSI
6	1	1	35-02099 *	Valve, Regulating Ball 1" FPT 6 Second Operation (344BRL-24-03CCS)
7	3	5	38082-15	Cable, 4 Pin Din Connector w/1.3m 3-Wire
8	1	1	3A100114	Fitting, Hose 1" MPT x 1-1/4" HB
9	2	2	3A114	Fitting, Hose 1-1/4" MPT x 1-1/4" HB
10	1	1	3A114100	Adapter, Hose 1-1/4" MPT x 1" Barb
11	1	1	3EL34100	Adapter, Hose 90° 3/4" MPT x 1" HB
12	2	2	450B	Brace, valve cover
13	1	1	450C	Valve cover
14	1	1	450MOUNT	Ball valve mounting plate
15	1	5	45529-3/4 **	Fitting, QC 3/4" Straight HB w/Clip & O-Ring
16	2 ***	0	45529-1 **	Fitting, QC 1" Straight HB w/Clip & O-Ring
17	1	1	465BEC-2Q-D *+	Manifold, 5-Valve #50 Flange Inlets QC Outlets DIN Connection
18	2	2	55245-50	Clamp, #50 Series & O-Ring Kit SS
19	6 ***	10	6812052	Hose Clamp, 1/2" - 1-1/4" SS
20	4 ***	2	6816052	Hose Clamp, 11/16" - 1-1/2" SS
21	4	4	6820052	Hose Clamp, 3/4" - 1-3/4" SS
22	1	1	846034 *	Valve, Relief Diaphragm Type 300PSI 3/4" NPT Fittings
23	1	1	8RB11434	Bushing, Reducer 1-1/4" MPT x 3/4" FPT Sch 80 Poly
24	1	1	8SE100	Elbow, Street 90° 1" NPT Sch 80 Poly
25	1	1	8TT114	Tee, Poly 1-1/4" FPT Sch 80
26	1	1	90-50230	Kit, Flow Meter 801 w/1" Hose Barbs
27	1	1	A114112SS	Fitting, 304 SS Hose 1-1/4" MPT x 1-1/2" HB
28	1	1	A114SS	Fitting, Hose 1-1/4" MPT x 1-1/4" HB SS
29	2	2	A4ME4	Adapter, TrueSeal Fitting 90° 1/4" Tube
30	1	1	BAAF	Isolator, Pressure Gauge 1/4" FPT
31	2	2	CB12*3G5	Bolt, Carriage 1/2-13 x 3" Gr 5
32	12	12	CB38*34G5	Bolt, Carriage 3/8-16 x 3/4" Gr 5
33	1	1	CP45508-1/4-PP	Fitting, Flange 1/4" FPT Gauge Port #50
34	1	1	CP72238-PP	Fitting, Flange 90° 1-1/4" Hose Barb #50
35	1	1	DE46	Decal, CropCare Logo 1.9" x 8.8"
36	2	2	FW12S	Washer, Flat, 1/2" SS
37	2	2	FN12	Nut, Flange 1/2-13
38	12	12	FN38	Nut, Flange 3/8-16
39	3	5	FW14	Washer, Flat 1/4"
40	1	1	GG1604	Gauge, 4" Liquid Filled 160 PSI

C3PT-463, C3PT-465 Breakdown

460 series manifold, 3-5 sections, for 3 points

Ref#	463 Qty.	465 Qty.	Part Number	Description
41	3	5	H6*20M	Bolt, Hex 6mm x 20mm 1.0 Pitch
42	1	1	N114*CLS	Nipple, Pipe 1-1/4" MPT x short SS
43	3	5	NC6M	Nut, Hex 6mm x 1.0 Pitch
44	1	1	RB1141S	Bushing, Reducer 1-1/4" MPT x 1" FPT SS
45	1	1	SE114S	Elbow, Street 1-1/4" NPT SS
46	2	2	T114S	Tee, 1-1/4" FPT SS
47	1	1	T403	Control junction box, for 3 points and large trailers
48	1	1	T529	Mounting nipple, 1" MPT x 3", stainless
49	1	1	T538	Electric valve mount post, for large 3PT
50	4	4	TB163	Clamp, T-Bolt 1-5/8"-1-7/8" (1.62"/1.87")
51	2	2	TB188	Clamp, T-Bolt 1-7/8 -2-3/16 (1.93/2.18")

* Component parts breakdowns are available for the indicated components.

+ With 3 sections use part# 463BEC-2Q-D

** Previous revisions with threaded components replace Part# 45529-3/4 with Part # #3A10034, Part# 45529-1 with Part# 3A100, and Part# 465BEC-2Q-D with Part# 465BEC-24-D (Part# 465BEC-2Q-D with Part# 465BEC-24-D with 3 sections).

*** On 60ft booms with three section controls the following components are used on sections 1 and 3 only:

- Boom plumbing is supplied with 1" hose (Item 3).
- tem 15 is replaced with Item 16.
- Item 19 is replaced with Item 20.