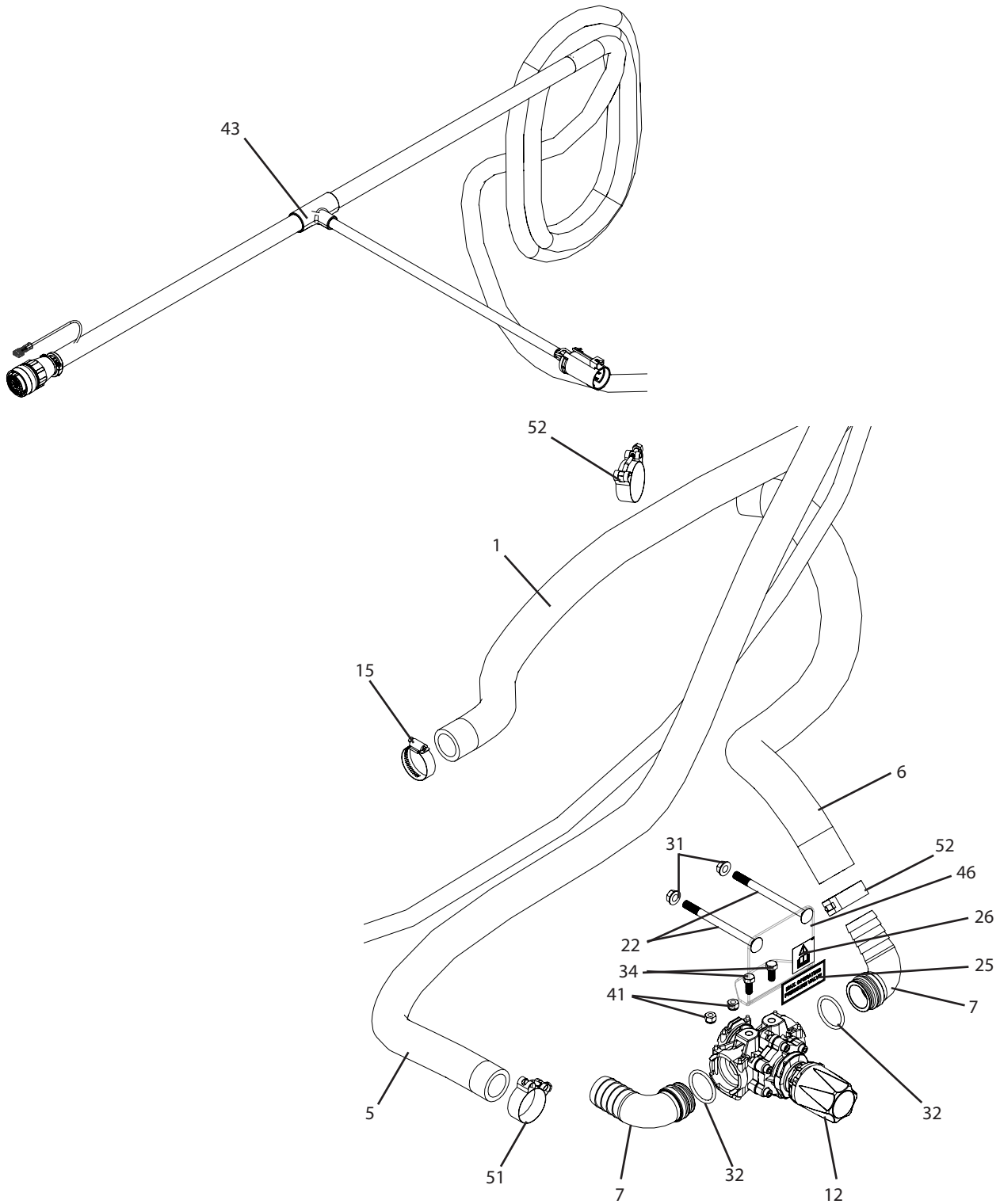


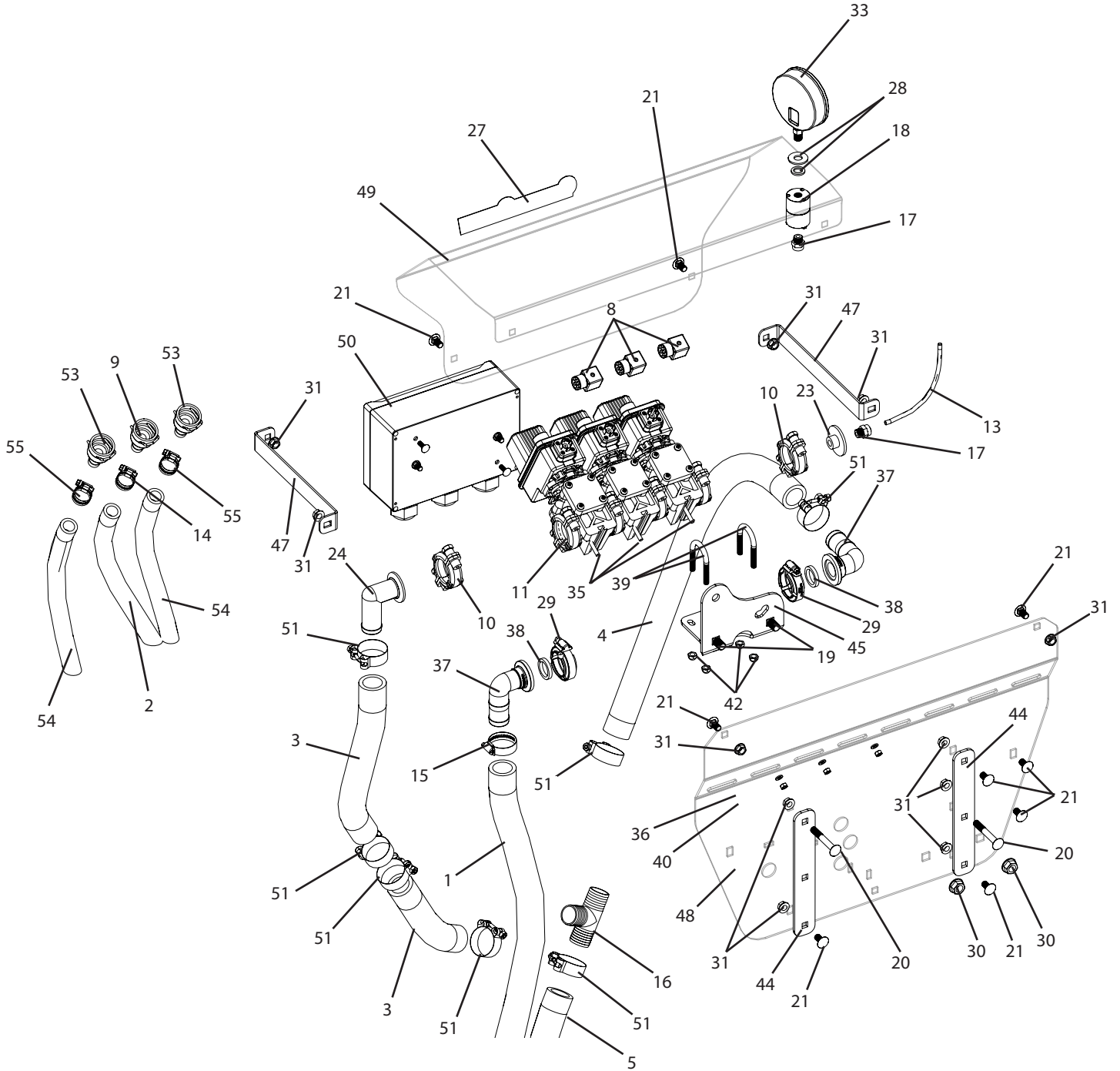
C3PT1-463 Breakdown

3 Section High Pressure Controls, for 3PT's



C3PT1-463 Breakdown

3 Section High Pressure Controls, for 3PT's



C3PT1-463 Breakdown

3 Section High Pressure Controls, for 3PT's

Ref#	Qty.	Part Number	Description
1	6.7 FT	10104	Hose, EPDM Rubber 1-1/4" 150 PSI
2	12 FT	1012	Hose, EPDM Rubber 3/4" 300 PSI
3	1.2 FT	1120	Hose, Nitrile Grizzly 1-1/4" 500 PSI
4	2.75 FT	1120	Hose, Nitrile Grizzly 1-1/4" 500 PSI
5	8.5 FT	1120	Hose, Nitrile Grizzly 1-1/4" 500 PSI
6	2.33 FT	1124	Hose, Nitrile Grizzly 1-1/2" 500 PSI
7	2	1191538	Elbow, T5 QC x 1-1/2" HB
8	5	38082-15	Cable, 4 Pin Din Connector w/1.3m 3-Wire
9	1	45529-3/4	Fitting, QC 3/4" Straight HB w/Clip & O-Ring
10	2	46070	Clamp, Flange 50 series
11	1	463BEC-2Q-D *	Manifold, 3-Valve #50 Flange Inlets QC Outlets DIN Connection
12	1	475552 *	Valve, Pressure Relief T5 QC 290 PSI
13	1.2 FT	5156N	Tubing, Nylon 1/4" OD Black
14	2	6812052	Hose Clamp, 1/2" - 1-1/4" SS
15	2	6820052	Hose Clamp, 3/4" - 1-3/4" SS
16	1	3T114	Tee, Fitting 1-1/4" HB Poly
17	2	A4MC4	Adapter, TrueSeal 1/4" MPT x 1/4" Tube
18	1	BAAF	Isolator, Pressure Gauge 1/4" FPT
19	2	CB12*1G5	Bolt, Carriage 1/2-13 x 1" Gr 5
20	2	CB38*234G5	Bolt, Carriage 3/8-16 x 2-3/4" Gr 5
21	9	CB38*34G5	Bolt, Carriage 3/8-16 x 3/4" Gr 5
22	2	CB38*5G5	Bolt, Carriage 3/8-16 x 5" Gr 5
23	1	CP45508-1/4-PP	Fitting, Flange 1/4" FPT Gauge Port #50
24	1	CP72238-PP	Fitting, Flange 90° 1-1/4" Hose Barb #50
25	1	DE105	Decal, Max Operating Pressure
26	1	DE115	Decal, Read Owners Manual
27	1	DE46	Decal, CropCare Logo 1.9" x 8.8"
28	2	FW12S	Washer, Flat, 1/2" SS
29	2	FC100	Clamp, Flange 1" Std SS
30	2	FN12	Nut, Flange 1/2-13
31	13	FN38	Nut, Flange 3/8-16
32	2	G11063	O-Ring, EDPM T5 Quick Connect
33	1	GG3004	Gauge, 4" Liquid Filled 300 PSI
34	2	H5C516*34	Bolt, Hex 5/16-18 x 3/4" Gr 5
35	5	H6*20M	Bolt, Hex 6mm x 20mm 1.0 Pitch
36	5	LW14	Washer, Lock 1/4"
37	2	M100125BRB90	Flange, 1-1/4" 90 Degree HB x 1" Flange
38	2	M100G	Gasket, Manifold EDPM 1"
39	2	N222125	Bolt, U-Bolt Round 5/16-18 x 1-3/8" x 2-1/2"
40	5	NC6M	Nut, Hex 6mm x 1.0 Pitch

* Component parts breakdowns are available for these parts.

C3PT1-463 Breakdown

3 Section High Pressure Controls, for 3PT's

Ref#	Qty.	Part Number	Description
41	2	NNC516	Nut, Lock Nylon 5/16-18
42	4	SNC516	Nut, Lock Steel 5/16-18
43	1	T420	CropCare wiring harness, 24', for TeeJet controls
44	2	T611	3pt sprayer, control mount plate
45	1	T860	Regulating valve mount
46	1	T862	Pressure relief valve mount, 3PT
47	2	T863	Valve cover strap
48	1	T864	control back plate, C3PT1
49	1	T865	control front plate, C3PT1
50	1	T872 *	Electrical Box, CTR2 Controls
51	8	TB163	Clamp, T-Bolt 1-5/8"-1-7/8" (1.62"/1.87")
52	2	TB188	Clamp, T-Bolt 1-7/8 -2-3/16 (1.93/2.18")
53	2	45529-1	Fitting, QC 1" Straight HB w/Clip & O-Ring
54	60 FT	1016	Hose, EPDM Rubber 1" 300 PSI
55	4	6816052	Hose Clamp, 11/16" - 1-1/2" SS

* Component parts breakdowns are available for these parts.