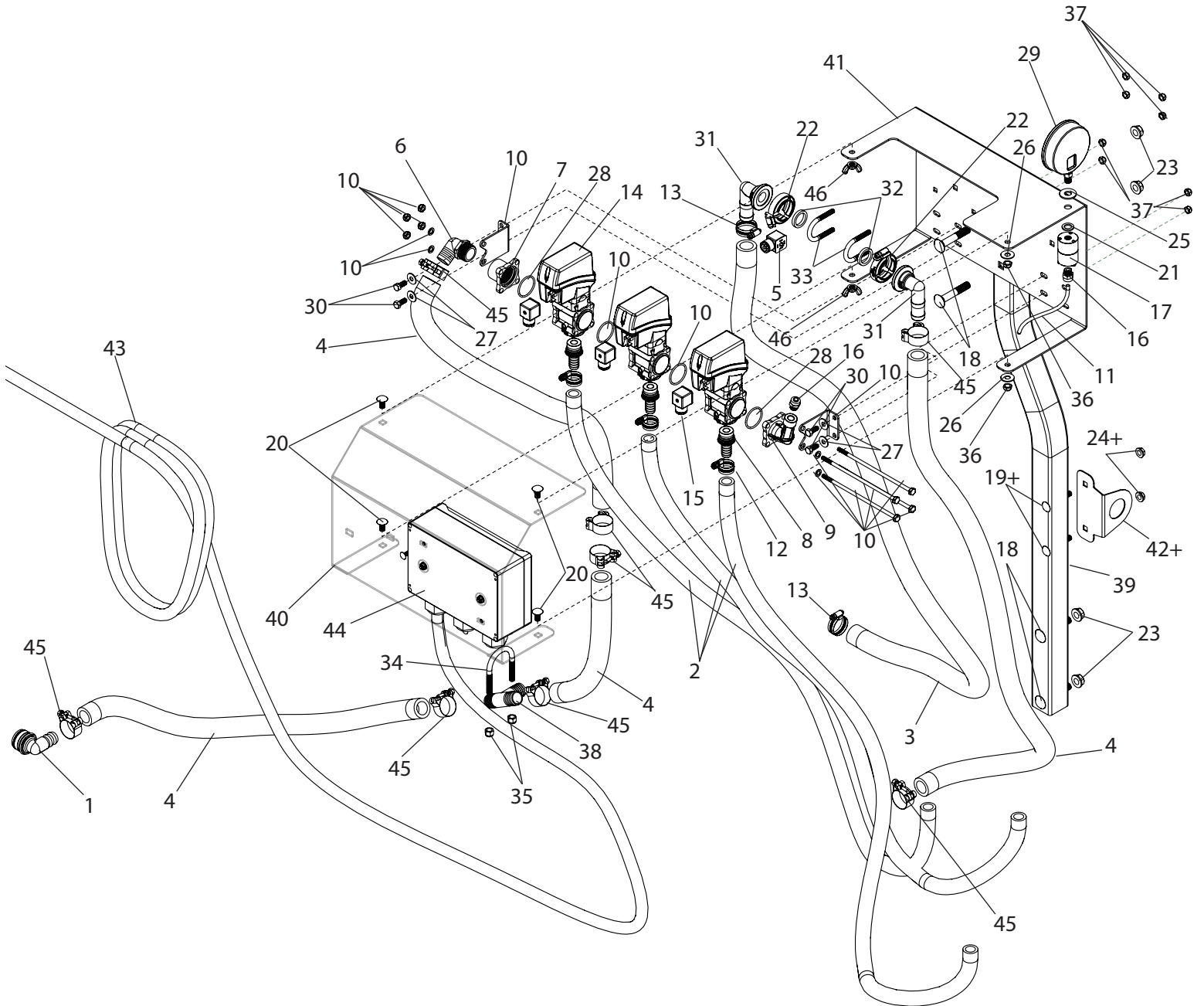


C3PT2-863H & C3PT2-865H Breakdown

863 Series, High Pressure, By-Pass, for 3PT205-305

- 3 section controls shown



+ Only required with automatic rate control.

C3PT2-863H & C3PT2-865H Breakdown

863 Series, High Pressure, By-Pass, for 3PT205-305

Ref#	Qty / 3 Sections	Qty / 5 Sections	Part Number	Description
1	1	1	09184*****	Elbow, 1" HB x 1-1/4" QC
2	41 FT	70 FT	1012**	Hose, EPDM Rubber 3/4" 300 PSI
3	6.5 FT	6.5 FT	1016	Hose, EPDM Rubber 1" 300 PSI
4	12.5 FT	12.5 FT	1116	Hose, Nitrile Grizzly 1" 500 PSI
5	1	1	38082-15	Cable, 4 Pin Din Connector w/1.3m 3-Wire
6	1	1	3EL100	Adapter, Hose Ell 1" MPT x 1" HB
7	1	1	463000-043	Inlet, Manifold 1" FPT #463
8	3	5	463001-119-1*	Fitting, Port Outlet w/O-Ring x 3/4" HB
9	1	1	463011N-130	Adapter, Pressure Gauge 1/4" NPT (Nylon)
10	1	---	463900-930	Kit, Bolt 3 Section SS
11	---	1	463900-950	Kit, Bolt 5 Section SS
11	1.5FT	1.5FT	5156N	Tubing, Nylon 1/4" OD Black
12	6	10	6812052***	Hose Clamp, 11/16" - 1-1/4" SS
13	2	2	6816052	Hose Clamp, 13/16" - 1-1/2" SS
14	3	5	8630001****	Valve, 1/2" HB Outlet 290 PSI
15	3	5	8650900-140	Cable, 3 Wire DIN & Plug
16	2	2	A4MC4	Adapter, TrueSeal 1/4" MPT x 1/4" Tube
17	1	1	BAAF	Isolator, Pressure Gauge 1/4" FPT
18	4	4	CB12*3G5	Bolt, Carriage 1/2-13 x 3" Gr 5
19	2	2	CB38*212G5+	Bolt, Carriage 3/8-16 x 2-1/2" Gr 5
20	4	4	CB38*34G5	Bolt, Carriage 3/8-16 x 3/4" Gr 5
21	1	1	FW12S	Washer, Flat, 1/2" SS
22	2	2	FC100	Clamp, Flange 1" Std SS
23	4	4	FN12	Nut, Flange 1/2-13
24	2	2	FN38+	Nut, Flange 3/8-16
25	1	1	FW12S	Washer, Flat, 1/2" SS
26	2	2	FW38	Washer, Flat 3/8"
27	4	4	FW516	Washer, Flat 5/16"
28	2	2	G10071V	O-Ring, Manifold Viton #463
29	1	1	GG3004	Gauge, 4" Liquid Filled 300 PSI
30	4	4	H5C516*34	Bolt, Hex 5/16-18 x 3/4" Gr 5
31	2	2	M100BRB90	Elbow, 1" Flange x 1" 90° HB
32	2	2	M100G	Gasket, Manifold EDPM 1"
33	2	2	N222125	Bolt, U-Bolt Round 5/16-18 x 1-3/8" x 2-1/2"
34	1	1	N222190	Bolt, U-Bolt Round 3/8-16 x 2" x 3-1/2" Zinc
35	2	2	NNC38	Nut, Lock Nylon 3/8-16
36	2	2	SNC38	Nut, Lock Steel 3/8-16
37	8	8	SNC516	Nut, Lock Steel 5/16-18
38	1	1	T100	Tee, 1" HB Nylon
39	1	1	T313	200-300 3PT Controls, Control Post
40	1	1	T314	200-300 3PT Controls, Control Cover
41	1	1	T315	200-300 3PT Controls, Manifold Mount
42	1	1	T336+	Flowmeter Mount Plate, 3PT200-3PT305
43	1	1	T420	CropCare wiring harness, 26', for TeeJet controls
44	1	1	T872****	Electrical Box, CTR2 Controls
45	8	8	TB138	Clamp, T-Bolt 1-3/8" - 1-9/16"
46	2	2	WN38	Nut, Wing 3/8-16

* 463001-113-1 hose barbs if used with booms 30' or less.

**1008 hose if used with booms 30' or less.

***6806052 hose clamps if used with booms 30' or less.

****Has parts breakdown available

***** Use part # 1091525 when not used with convenience package.

+Only required with automatic rate control.