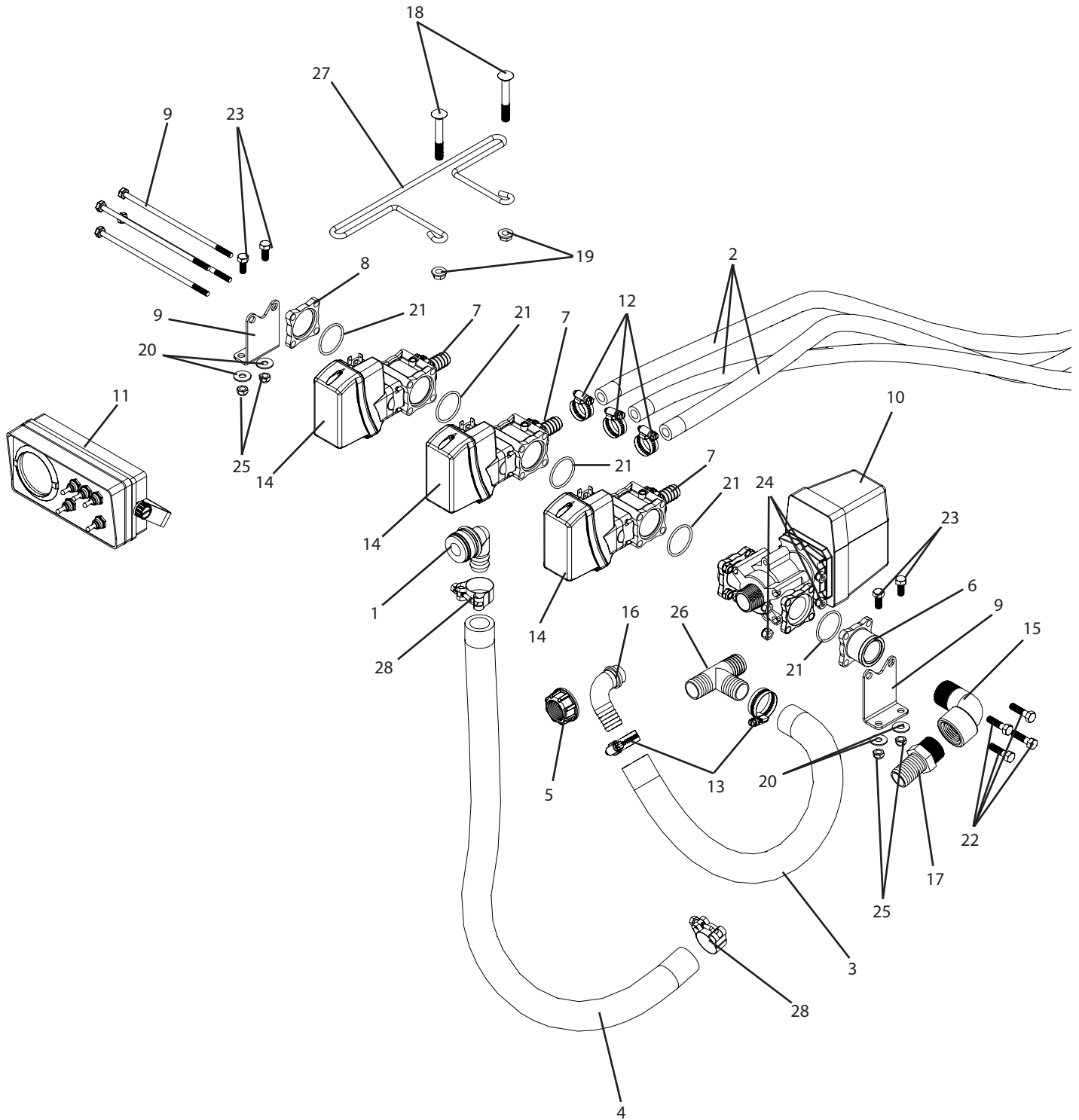


## CTR3-4663-863 Breakdown

### Arag high pressure control subassembly



## CTR3-4663-863 Breakdown

### Arag high pressure control subassembly

Ref#	Qty.	Part Number	Description
1	1	09184**	Elbow, 1" HB x 1-1/4" QC
2	48FT	1012***	Hose, EPDM Rubber 3/4" 300 PSI
3	2FT	1016	Hose, EPDM Rubber 1" 300 PSI
4	5FT	1116	Hose, Nitrile Grizzly 1" 500 PSI
5	1	2002040	Nut, Fly 1" BSP
6	1	463000-043	Inlet, Manifold 1" FPT #463
7	3	463001-119-1***	Fitting, Port Outlet w/O-Ring x 3/4" HB
8	1	463011-120	Cap, Outlet Manifold #463
9	1	463900-930	Kit, Bolt 3 Section SS
10	1	465622****	Valve, Electric Regulating 290 PSI #465 1" BMT Bypass Outlet
11	1	4665-3-OP300-3	Box, Control 3 Section 300 PSI w/Cables & Gauge Tubing & Tubing Connectors
12	6	6812052***	Hose Clamp, 1/2" - 1-1/4" SS
13	2	6816052	Hose Clamp, 11/16" - 1-1/2" SS
14	3	8630001****	Valve, 1/2" HB Outlet 290 PSI
15	1	8SE100	Elbow, Street 90° 1" NPT Sch 80 Poly
16	1	9910550370	Adapter, Elbow 1" HB
17	1	A100SS	Adapter, Hose 1" MPT x 1" HB SS
18	2	CB38*234G5	Bolt, Carriage 3/8-16 x 2-3/4" Gr 5
19	2	FN38	Nut, Flange 3/8-16
20	4	FW516S	Washer, Flat 5/16" SS
21	5	G10071V *	O-Ring, Manifold Viton #463
22	4	H516*114S	Bolt, Hex 5/16-18 x 1-1/4" SS
23	4	H5C516*34	Bolt, Hex 5/16-18 x 3/4" Gr 5
24	4	NNC516S	Nut, Lock Nylon 5/16-18 SS
25	4	SNC516	Nut, Lock Steel 5/16-18
26	1	T100**	Tee, 1" HB Nylon
27	1	T485	Mount, Wire Harness Small Trailer
28	2	TB138	Clamp, T-Bolt 1-3/8" - 1-9/16"

\* 4 of these are included in 463900-930.

\*\*Only used with convenience package.

\*\*\*Used with 3/4" plumbing, replace 1012 with 1008, 6812052 with 6806052.

\*\*\*\*Additional breakdowns available.