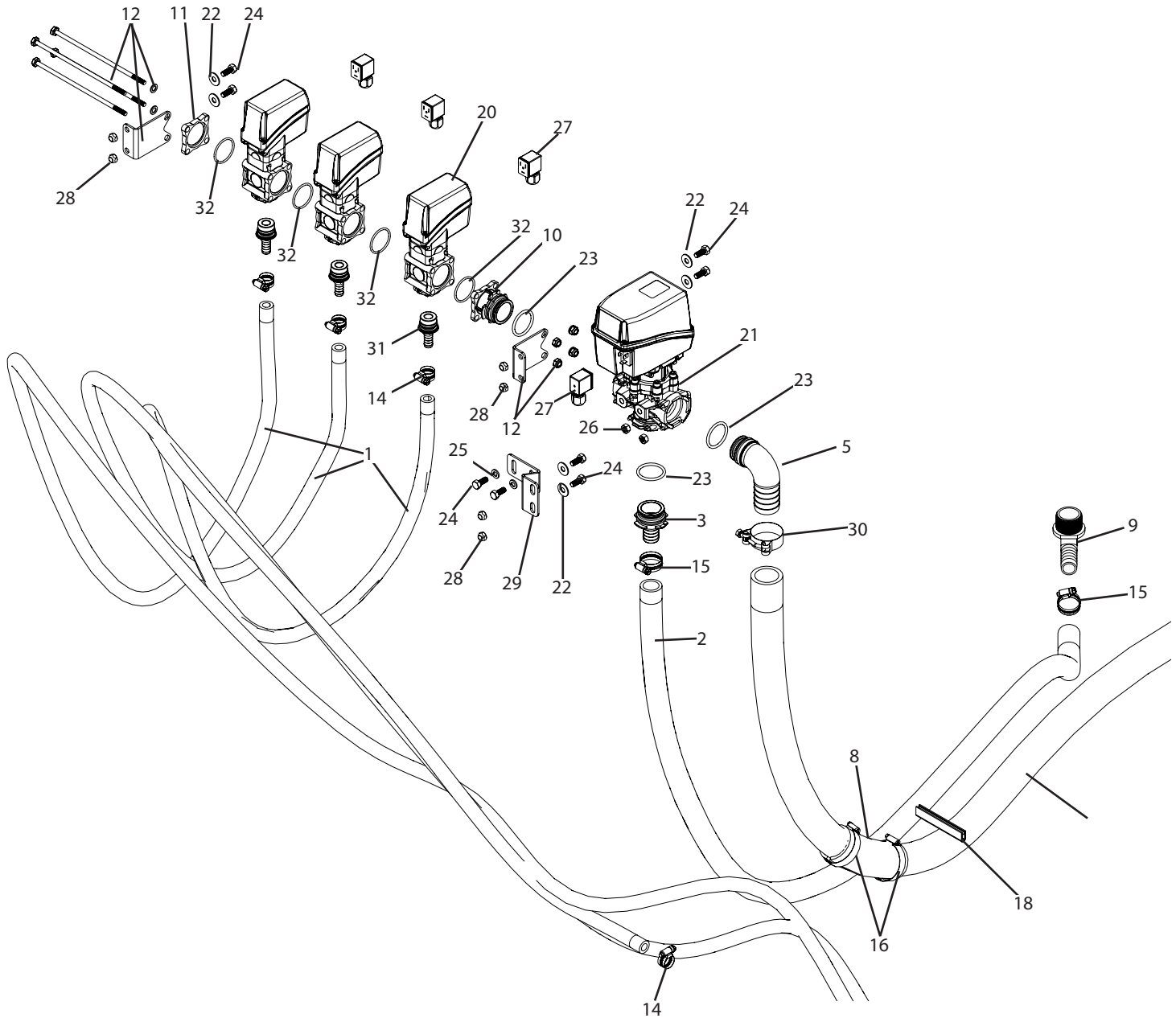
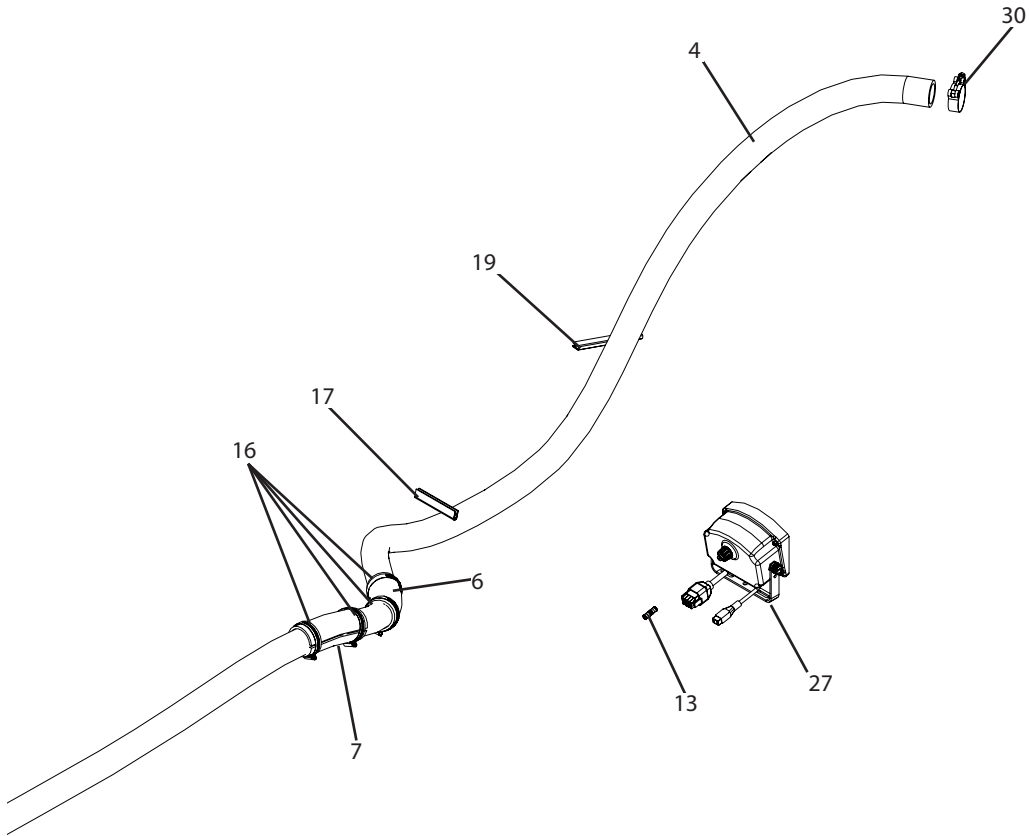


CTR4-P140-863 Breakdown

Electric valves with Salvarani console, 3 sections, high pressure



CTR4-P140-863 Breakdown



CTR4-P140-863 Breakdown

| Ref# | Qty. | Part Number | Description |
|------|---------|------------------|--|
| 1 | 64 FT | 1008 | Hose, EPDM Rubber 1/2" 300 PSI |
| 2 | 5.5 FT | 1016 | Hose, EPDM Rubber 1" 300 PSI |
| 3 | 1 | 1091525 | Adapter, Hose T5 Male QC to 1" HB |
| 4 | 15 FT | 1124 | Hose, Nitrile Grizzly 1-1/2" 500 PSI |
| 5 | 1 | 1191538 | Elbow, T5 QC x 1-1/2" HB |
| 6 | 0.5 FT | 3120 | Hose, Suction 2" EPDM Blend 60 PSI |
| 7 | 0.5 FT | 3120 | Hose, Suction 2" EPDM Blend 60 PSI |
| 8 | 0.5 FT | 3120 | Hose, Suction 2" EPDM Blend 60 PSI |
| 9 | 1 | 3EL114100 | Adapter, Hose 90° 1-1/4" MPT x 1" HB |
| 10 | 1 | 463000-056 | 860 male flange with T5 male fork connector |
| 11 | 1 | 463011-120 | Cap, Outlet Manifold #463 |
| 12 | 1 | 463900-930 | Kit, Bolt 3 Section SS |
| 13 | 1 | 466303-084 | Coupling, 4mm Pressure Tubing Union |
| 14 | 6 | 6806052 | Hose Clamp, 1/2" - 29/32" SS |
| 15 | 2 | 6816052 | Hose Clamp, 11/16" - 1-1/2" SS |
| 16 | 6 | 6832 | Hose Clamp, 1-1/2" - 2-1/2" SS |
| 17 | 0.34 FT | 8451A53 | Trim, Push-on Rubber w/Steel Core 5/64" - 13/64" |
| 18 | 0.34 FT | 8451A53 | Trim, Push-on Rubber w/Steel Core 5/64" - 13/64" |
| 19 | 0.5 FT | 8451A53 | Trim, Push-on Rubber w/Steel Core 5/64" - 13/64" |
| 20 | 3 | 8630001 * | Valve, 1/2" HB Outlet 290 PSI |
| 21 | 1 | 8750652 * | 875 Series electric diaphragm pressure relief control valve w/T5 fork coupling |
| 22 | 6 | FW516S | Washer, Flat 5/16" SS |
| 23 | 3 | G11063 | O-Ring, EDPM T5 Quick Connect |
| 24 | 8 | H5C516*34 | Bolt, Hex 5/16-18 x 3/4" Gr 5 |
| 25 | 2 | LW516 | Washer, Lock 5/16" |
| 26 | 2 | NC516 | Nut, Hex 5/16-18 |
| 27 | 1 | P140-3-VP-300PSI | Box, Control 3 Section 300 PSI w/Cables & Gauge Tubing & Tubing Connectors |
| 28 | 6 | SNC516 | Nut, Lock Steel 5/16-18 |
| 29 | 1 | T340 | Regulating valve mount, 4663 Arag Controls |
| 30 | 2 | TB188 | Clamp, T-Bolt 1-7/8 -2-3/16 (1.93/2.18") |
| 31 | 3 | 463001-113-1 + | Fitting, Port Outlet w/O-Ring 1/2" HB |
| 32 | 4 | G10071V ++ | O-Ring, Manifold Viton #463 |

* See support page for component parts breakdowns.

+ Used for 1/2" hose. Replace 1008 with 1012, 6806052 with 6812052, and 463001-113-1 with 463001-119-1.

++ These are included in 463900-930.