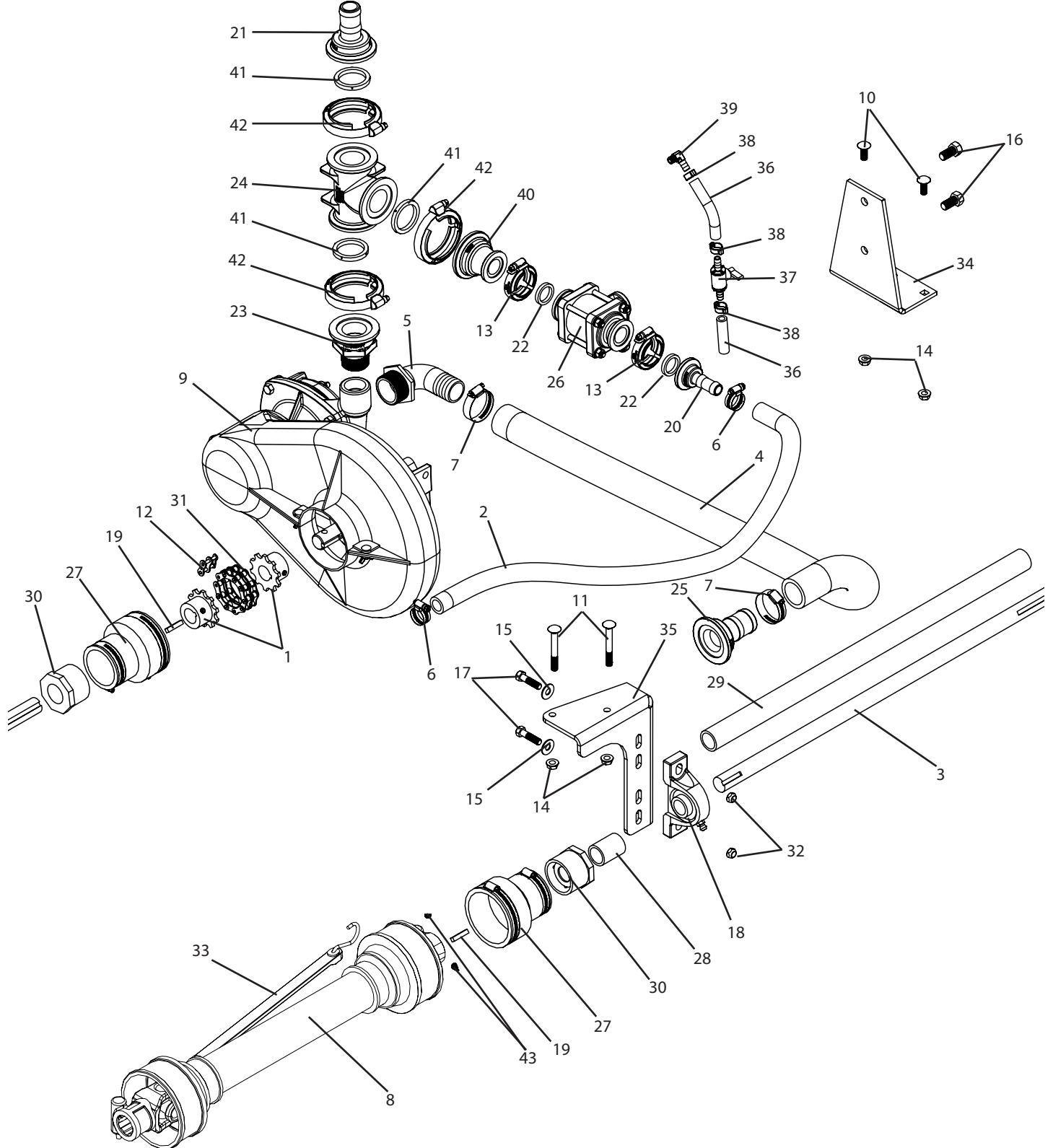


P3PT-9403C540S Breakdown

9403C-B pump, 3PT sprayers, 300 & 400gal



P3PT-9403C540S Breakdown

9403C-B pump, 3PT sprayers, 300 & 400gal

Ref#	Qty.	Part Number	Description
1	2	311600	Coupler, Roller Chain #60 Flexible 1" Bore Sprocket x 10 Teeth
2	2.5 FT	1012	Hose, EPDM Rubber 3/4" 300 PSI
3	1	1441600	Shaft, 1" x 36" x 1/4" Keyway
4	3.5 FT	3112	Hose, Suction EPDM Blend 1-1/2" 60 PSI
5	1	3EL112	Elbow, Hose 90° 1-1/2" MPT x 1-1/2" Barb
6	2	6812052	Hose Clamp, 1 1/16" - 1-1/4" SS
7	2	6824052	Hose Clamp, 1-1/16" - 2" SS
8	1	7101051UC007602	Driveline, PTO BP #1 * 1-3/8" 6 Spline x 1" RB
9	1	9403C540S-B	Silicon Carbide Pump, Centrifugal Belt-Driven 1" Shaft 1-1/2" FPT Inlet 1-1/4" FPT Outlet
10	2	CB38*1G5	Bolt, Carriage 3/8-16 x 1" Gr 5
11	2	CB38*3G5	Bolt, Carriage 3/8-16 x 3" Gr 5
12	1	CL60PRC	Link, Connector Chain No 60-1 PRC
13	2	FC100 *	Clamp, Flange 1" Std SS
14	4	FN38	Nut, Flange 3/8-16
15	2	FW38	Washer, Flat 3/8"
16	2	H5C12*1	Bolt, Hex 1/2-13 x 1" Gr 5
17	2	H5C38*112	Bolt, Hex 3/8-16 x 1-1/2" Gr 5
18	1	HCP205-16P	Bearing, Pillow Block 1" Bore
19	2	KEY14	Key, Machine 1/4" x 1-1/4" Sq Ends
20	1	M100075BRB *	Fitting, Flange 3/4" HB x 1" Flange
21	1	M200125BRB *	Fitting, Flange 1-1/4" HB x 1" Flange
22	2	M100G *	Gasket, Manifold EDPM 1"
23	1	M200125MPT *	Flange, 1-1/4" MPT x 1" Flange
24	1	M200TEE *	Tee, Flange 1" Tee
25	1	M200150BRB	Fitting, Flange 1-1/2" HB x 2" Flange
26	1	MV100CF *	Valve, Ball 1" Flange x 1" Flange
27	2	P105632	Coupling, Flex Seal 3" x 2" Fernco
28	0.151 FT	PVC1	Pipe, 1" Sch 40 PVC
29	2.166 FT	PVC1	Pipe, 1" Sch 40 PVC
30	2	RB21P	Bushing, Reducer PVC 2" x 1" Sch 40
31	0.56	RC60RPRC	Chain, Roller Import #60-1R 3/4" Pitch
32	2	SNC38	Nut, Lock Steel 3/8-16
33	1	TS15	Tarp Strap, 15" Rubber
34	1	T563	Pump mount bracket, 9402C on 3PT300 frame
35	1	T594	3pt sprayer, bearing plate for PTO
36	0.59FT	1006 +	Hose, EPDM Rubber 3/8" 300 PSI
37	1	9432 +	Valve, Ball 3/8" Hose Barbs
38	3	W1518 +	Clamp, Oetiker 5/8"
39	1	EL1838BR +	Adapter, Hose Ell 1/8" MPT x 3/8" HB Brass
40	1	M200100CPG	Coupling, Reducer 2" to 1"
41	3	M201G	Gasket, Manifold EPDM 2" w/Rib
42	3	FC200	Clamp, Flange 2" Std SS
43	2	SSC38*12	Screw, Allen Set 3/8-16 x 1/2"

* Parts are replaced by M200125BRB90 when used with rinse, education, and quickfill.

** Has component parts breakdown available.

+ Items are included as component parts of T1102.