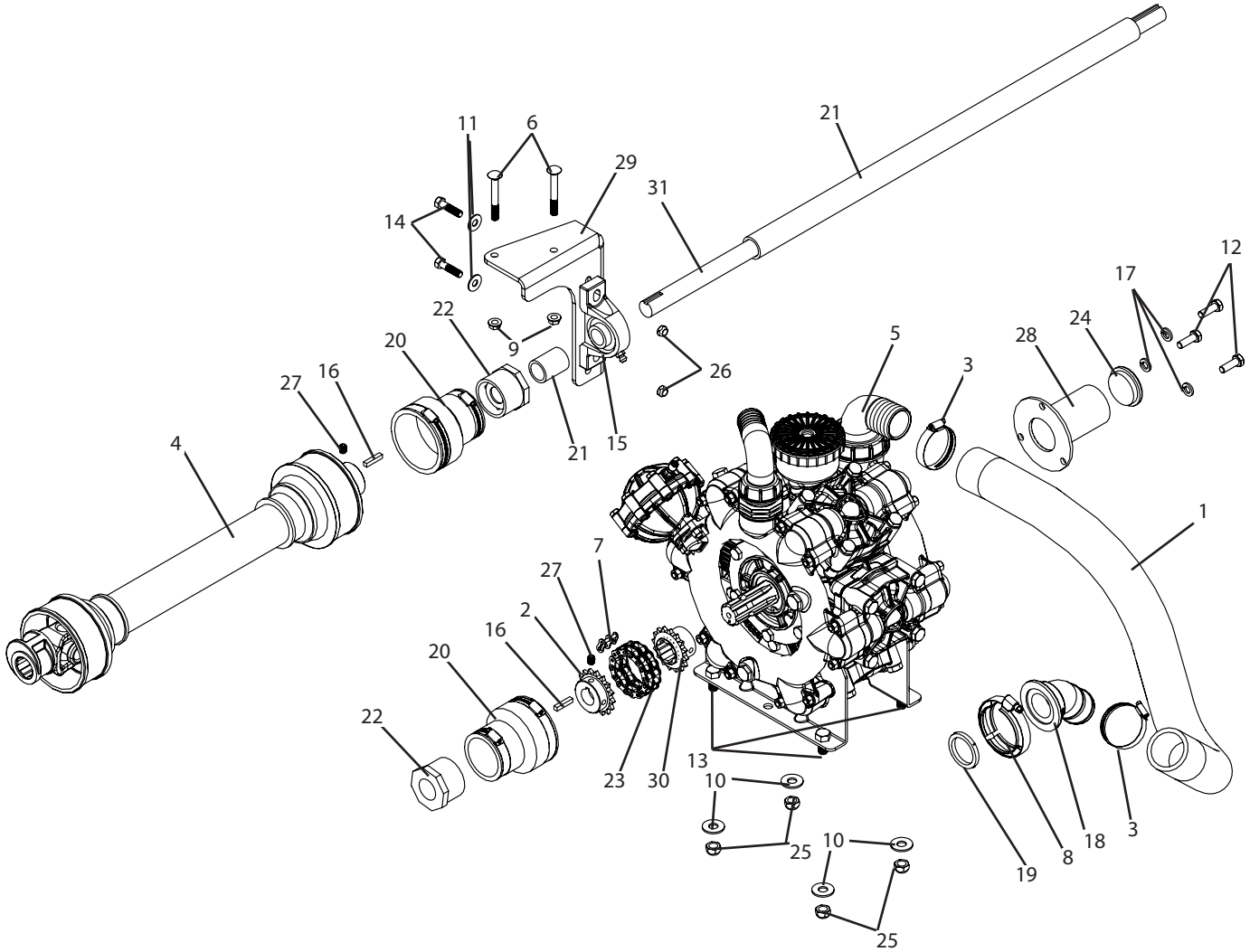


P3PT-D250-M Breakdown

D250 Hypro (6) diaphragm pump with PTO shaft



P3PT-D250-M Breakdown

D250 Hypro (6) diaphragm pump with PTO shaft

Ref#	Qty.	Part Number	Description
1	3 FT	3120	Hose, Suction 2" EPDM Blend 60 PSI
2	1	401616	Sprocket, Roller Chain 16 Teeth 1" Bore (Use w/No. 40 - 1/2" Pitch Chain)
3	2	6832	Hose Clamp, 1-1/2" - 2-1/2" SS
4	1	7101051UC007602	Driveline, PTO BP #1 * 1-3/8" 6 Spline x 1" RB approx. 27.125" oa length collapsed
5	1	AR250BPCC *	Pump, Diaphragm (6) 2" HB Inlet x 1-1/2" HB Outlet 66 GPM 290 PSI
6	2	CB38*3G5	Bolt, Carriage 3/8-16 x 3" Gr 5
7	1	CL402US	Link, Connector Chain No. 40-2 USA
8	1	FC200	Clamp, Flange 2" Std SS
9	2	FN38	Nut, Flange 3/8-16
10	4	FW12	Washer, Flat 1/2" USS
11	2	FW38	Washer, Flat 3/8"
12	3	H10*30M	Bolt, Hex 10mm x 30mm 1.50 pitch 10.9 Zinc
13	4	H5C12*1	Bolt, Hex 1/2-13 x 1" Gr 5
14	2	H5C38*112	Bolt, Hex 3/8-16 x 1-1/2" Gr 5
15	1	HCP205-16P	Bearing, Pillow Block 1" Bore
16	2	KEY14	Key, Machine 1/4" x 1-1/4" Sq Ends
17	3	LW716	Washer, Lock 7/16"
18	1	M200BRB45	Fitting, Flange 2" 45 Degree HB Elbow x 2" Flange
19	1	M201G	Gasket, Manifold EPDM 2" w/Rib
20	2	P105632	Coupling, Flex Seal 3" x 2" Fernco
21	3 FT	PVC1	Pipe, 1" Sch 40 PVC
22	2	RB21P	Bushing, Reducer PVC 2" x 1" Sch 40
23	0.7 FT	RC402US	Chain, Roller USA, #40-2R, 1/2" pitch
24	1	RT191	Cap, Pipe Black Poly 2-3/8" OD Round
25	4	SNC12	Nut, Lock Steel 1/2-13
26	2	SNC38	Nut, Lock Steel 3/8-16
27	2	SSC38*12	Screw, Allen Set 3/8-16 x 1/2"
28	1	T567	PTO shaft cover for diaphragm pump
29	1	T594	3pt sprayer, bearing plate for PTO
30	1	T608	Hub & Sprocket Weldment
31	1	T616	Shaft, 3pt pump kit, high pressure

* Component parts breakdowns are available for these parts.