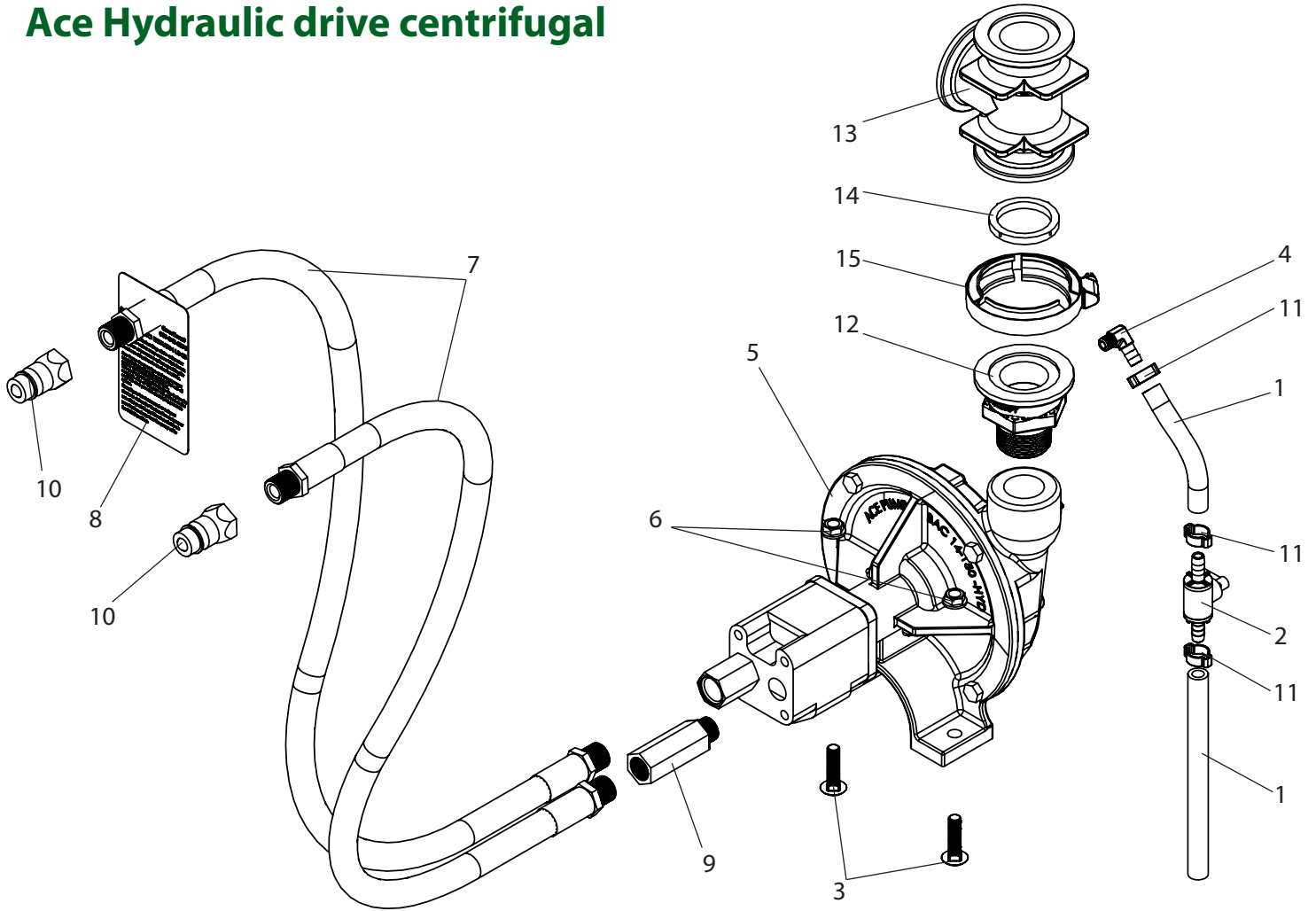


P510-FMC Breakdown

Ace Hydraulic drive centrifugal



Ref#	Qty.	Part Number	Description
1	1.25FT	1006 ++	Hose, EPDM Rubber 3/8" 300 PSI
2	1	9432 ++	Valve, Ball 3/8" Hose Barbs
3	2	CB38*112G5	Bolt, Carriage 3/8-16 x 1-1/2" Gr 5
4	1	EL1838BR ++	Adapter, Hose Ell 1/8" MPT x 3/8" HB Brass
5	1	FMC-150-HYD-206 *	Pump, Ace Centrifugal 7 GPM Hyd Drive (150 Series) 1-1/2" FPT Suction x 1-1/4" FPT Discharge
6	2	FN38	Nut, Flange 3/8-16
7	2	HH1205-1	5' Hose OAL, 1/2" w/ HY08-08MP ends
8	1	HYDRETTAG	Tag, Yellow Return Line On Hyd Pump
9	1	LS-206N	Liminter, Flow 7GPM 1/2" NPT x #8 (206 Hyd Motor)
10	2	S71-4	Tip, Hyd Male 1/2" FPT Fits S20-S40-S70
11	3	W1518 ++	Clamp, Oetiker 5/8"
12	1	M200125MPT ** +	Adapter, 2" Flange x 1-1/4" MPT
13	1	M200TEE **	Tee, Flange 2" Flanged Fitting
14	1	M201G **	Gasket, Manifold EPDM 2" w/Rib
15	1	FC200 **	Clamp, Flange 2" Std SS

* Has parts breakdown available.

++ Items are included as component parts of T1102.

** Used when agitation is mounted on the pump.

+ Use 3EL114 when used with rinse, eduction, and quick fill.