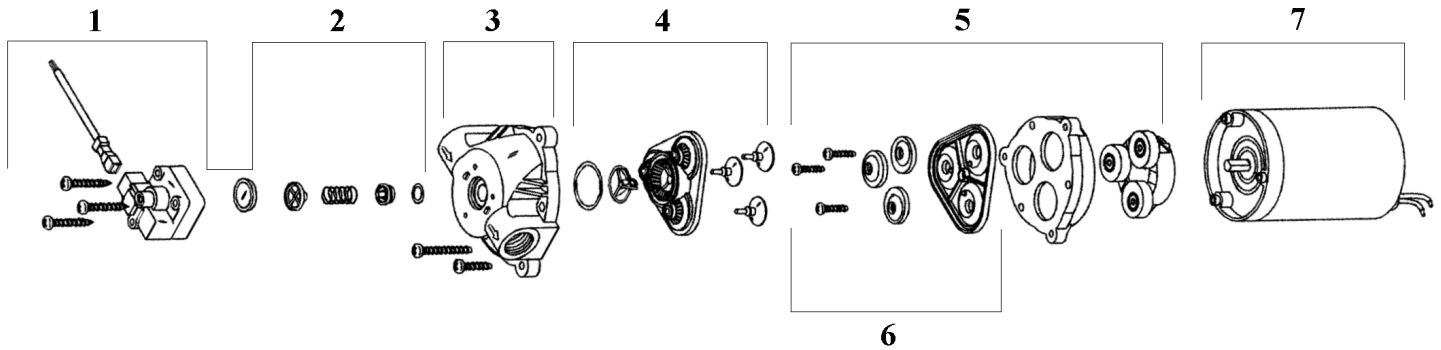


SHURflo® 8000 Series Diaphragm Pumps Without Bypass

Parts Breakdown:



Model Number	1 Switch Assembly Kit	2 Check Valve Assembly Kit	3 Upper Housing	4 Valve Assembly Kit	5/6 Diaphragm & Drive Kit	6 Pump Motor
8000-033-236	94-375-05	94-374-05	94-379-00	94-390-05	94-395-05	11-150-00
8000-343-236	94-375-05	94-374-05	94-379-00	94-390-05	94-395-05	11-111-00
8000-443-236	94-375-05	94-374-05	94-379-00	94-390-06	94-385-32	11-111-00
8000-533-236	94-375-05	94-374-05	94-379-00	94-390-05	94-385-32	11-150-00
8000-543-236	94-375-05	94-374-05	94-379-00	94-390-05	94-385-32	11-111-00
8000-543-936	94-375-06	94-374-05	94-379-00	94-390-05	94-385-32	11-111-00
8000-643-236	94-375-05	94-374-05	94-379-00	94-390-05	94-395-06	11-111-00
8000-813-236	94-375-05	94-374-05	94-379-00	94-390-05	94-395-06	11-150-00

Specifications:

- ◆ **Model 8000-033-236:** 1.0 gpm open flow, 110 volt, Viton® valves, Viton® diaphragm, 60 PSI demand switch, 3/8” npt female ports
- ◆ **Model 8000-343-236:** 1.2 gpm open flow, 12 volt, Viton® elastomers, 60 PSI demand switch, 3/8” npt female ports
- ◆ **Model 8000-443-236:** 1.8 gpm open flow, 12 volt, Santoprene® valves, Santoprene® diaphragm, 60 PSI demand switch 3/8” npt female ports
- ◆ **Model 8000-533-236:** 1.4 gpm open flow, 110 volt, Viton® valves, Santoprene® diaphragm, 60 PSI demand switch, 3/8” npt female ports
- ◆ **Model 8000-543-236:** 1.4 gpm open flow, 12 volt, Viton® valves, Santoprene® diaphragm, 60 PSI demand switch, 3/8” npt female ports
- ◆ **Model 8000-543-936:** 1.4 gpm open flow, 12 volt, Viton® valves, Santoprene® diaphragm, 60 PSI demand switch, 3/8” npt female ports, prewired with a wiring harness
- ◆ **Model 8000-643-236:** 1.8 gpm open flow, 12 volt, Buna valves, Geolast® diaphragm, 60 PSI demand switch 3/8” npt female ports
- ◆ **Model 8000-813-236:** 1.4 gpm open flow, 110 volt, Viton® valves, Santoprene® diaphragm, 60 PSI demand switch, 3/8” npt female ports

Features:

- ◆ Self priming up to 8 feet
- ◆ Chemical resistant materials
- ◆ Designed for heavy duty spraying and fluid transfer applications
- ◆ Built with the ability to run dry without causing damage
- ◆ Built in check valve